



BRAND Contrast Lighting

DESCRIPTION

NW3000CE 3.5 Inch 37-50 Watt GU5.3 MR16 Halogen Non-IC Shallow New Construction Housing with electronic transformer is made of 18 gauge galvanized steel. Non-IC designation requires that insulation be kept a minimum of 3 inches away from housing. Requires a 4 inch clearance beyond the ceiling level. Below ceiling accessible. Can fit in ceilings up to 1.5 inch thick. Includes 12 volt electronic transformer. One 37-50 watt, 12 volt GU5.3 MR16 bulb is required, but not included. Wattage determined by housing/trim combination. Dimmable with a low voltage electronic dimmer. See attached dimmer compatibility reference when using LED bulb option. Suitable for damp locations. UL listed. 3 5/8 inch ceiling cut out. 15.38 inch length x 7.5 inch width x 3.6 inch height. A complete fixture includes a housing and trim, sold separately.

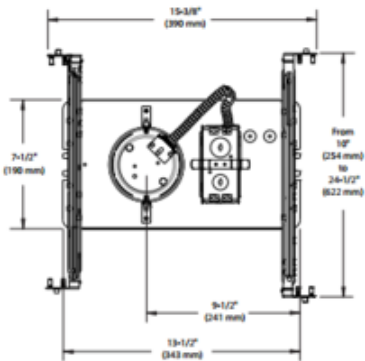
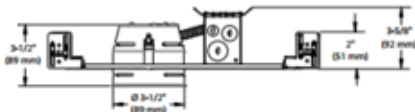


TRIM COLOR	N/A
BODY FINISH	Galvanized Steel
WATTAGE	50W
DIMMER	Low Voltage Electronic
DIMENSIONS	15.4"L x 7.5"W x 3.6"H
BULB NOT INCLUDED	
LAMP	1 x MR16/GU5.3 (bipin)/50W/12V Halogen 1 x MR16/GU5.3 (bipin)/12V LED

Technical Information

CEILING TYPE	Drywall with Trim
HOUSING TYPE	New Construction NON IC
HOUSING HEIGHT	4"
APERTURE SIZE	3.500"

SPEC # CLT106644



COMPANY	PROJECT	FIXTURE TYPE	APPROVED BY	DATE