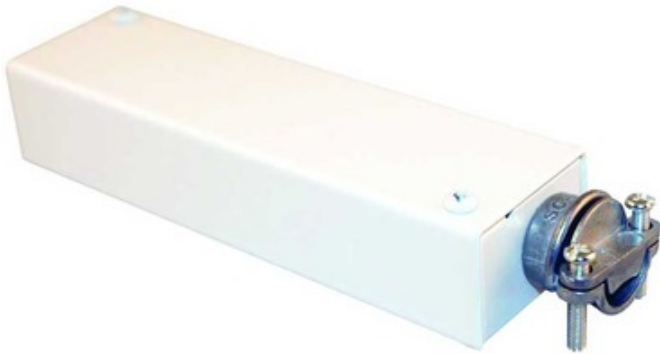


TL602E 25W LED Electronic Remote Driver/Transformer 12V



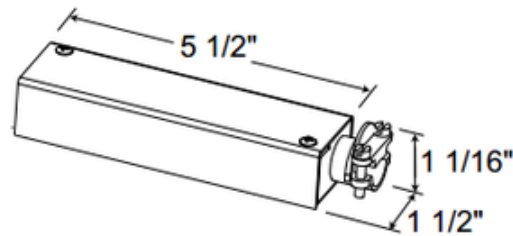
**Description:**

TL602E-25 12 Volt 25 Watt Electronic Remote Driver/Transformer is rated for 0.5 to 25 watts incandescent or LED total load, 120VAC input. Available in a 10, 25 or 60 watt direct wire or 60 watt plug in option. Made of 18 gauge die formed steel with powder coat finish in White. Available in a direct-wire or plug in version. IC rated for recessed applications and can be buried in insulation. Provided with terminal block on output side for quick and secure fixture wiring. Direct wire version supplied with die-cast fitting for 3/8 inch flexible metal conduit. Transformer should be located within 4 feet of first fixture in run. Provision for ground wire attachment. Supplied with two No 6 wood screws for mounting to wood surfaces. Incandescent loads can be dimmed with high quality dimmers designed for use with electronic transformers. LED loads may be dimmed using only dimmers that have been tested and qualified by Juno for use with Juno LED fixtures including: Leviton Acenti Ace-06-1L, Lutron Diva DVELV-300P, Lutron Nova T NTELV300, Lutron Skylark SELV-300P, or Lutron Spacer SPSELV-600, sold separately. UL listed. Suitable for damp locations. 5.5 inch length x 1.5 inch width x 1.1 inch height. Compatible with Juno Trac 12 miniature low voltage track system using LED or incandescent luminaires or Mini LED downlights.

Shown in: White

List Price: \$118.90  
 Our Price: \$71.34

Shade Color: N/A  
 Body Finish: White  
 Lamp: N/A  
 Wattage: N/A  
 Dimmer: Low Voltage Electronic  
 Dimensions: 5.5"L x 1.1"H x 1.5"W



Product Number: <b>JUN111316</b>			
Company:		Fixture Type:	Date: Feb 19, 2018
Project:		Approved By:	

#1000ET-ELECT25-002XX-XXWH

Fax: (773) 883-6131

Phone: 866-954-4489

Address: 1718 W. Fullerton Ave. Chicago IL 60614

www.Lightology.com