

IC928LED9G4 6 In 900 Lumen Super Slope IC Housing 120V



**Description:**

6 Inch Super Slope Generation 4 120 Volt 900 Lumen LED IC New Construction Housing features a 30 to 45 degree pitch. Dedicated LED, Air-Loc sealed slope ceiling new construction housing with integral light engine. IC rated construction allows for housing to be completely covered with insulation. Fully sealed housing stops infiltration and exfiltration of air, reducing heating and air cooling costs without the use of additional gaskets. Replaceable light engine mounts directly to slider plate and incorporates the latest generation high lumen output LED array. Comparable light output to 26 watt compact fluorescent while consuming less than 16 watts. Available with 2700K, 3000K, 3500K, or 4100K color temperature, 90 minimum CRI. 120 volt only driver is dimmable with the use of most incandescent, magnetic low voltage and electronic low voltage wall box dimmers (see attached manufacturer dimmer compatibility reference). Life rated for 50,000 hours at 70 percent lumen maintenance. Energy Star. Title 24 compliant with select trims. UL listed for damp locations. 18.5 inch length x 9.1 inch width x 7.6 inch height. A complete fixture includes a housing and trim, sold separately.

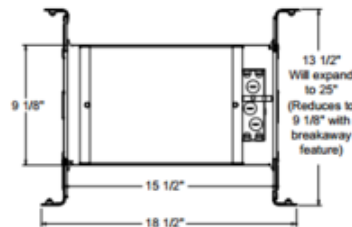
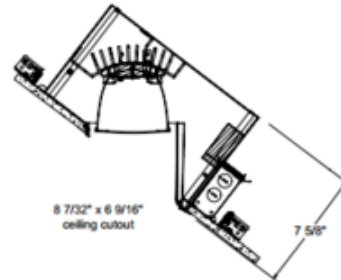
Shown in: Aluminum

List Price: \$347.21  
 Our Price: \$208.33

Shade Color: N/A  
 Body Finish: Aluminum  
 Lamp: 1 x LED/16W/120V LED  
 Wattage: 16W  
 Dimmer: Dimmable  
 Dimensions: 18.4"L x 7.6"H x 9.1"W

**Technical Information**

Luminous Flux: 900 lumens  
 Lumens/Watt: 56.25  
 Lamp Color: 2700 K  
 Color Rendering: 90 CRI  
 Lamp Life: 50000 hours  
 Ceiling Type: Sloped  
 Housing Type: Slope IC  
 Housing Height: 8"  
 Aperture Size: 6.000"



Product Number: <b>JUN111367</b>			
Company:		Fixture Type:	Date: Feb 25, 2018
Project:		Approved By:	

#1000HS-IC92271-016L1-XXAL

Fax: (773) 883-6131

Phone: 866-954-4489

Address: 1718 W. Fullerton Ave. Chicago IL 60614

www.Lightology.com