

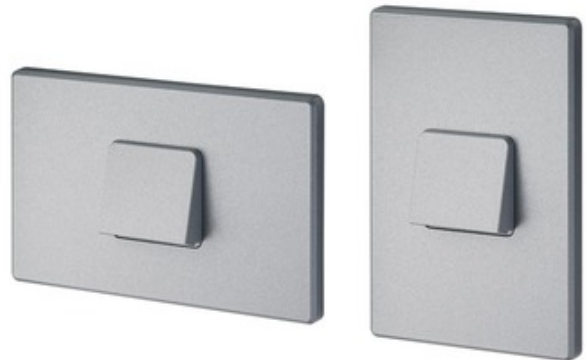


BRAND

Juno Lighting

DESCRIPTION

The LMSW Mini LED step light with hood optic is designed for installation in outdoor wall mount applications using a standard junction box-not supplied. IC rated for direct contact with insulation. Available in hood, cutoff, louver and marker optic. Modular design allows fixture to be mounted in horizontal or vertical orientation. Fixture provided in vertical orientation from factory. Finish options include Textured Black, Textured White, Textured Silver or Textured Bronze. LED light engine utilizes two 1 watt high lumen LEDs in 3000K or 4100K color temperature. LED driver accommodates input voltage of 120 VAC at 60Hz with power factor less than .9 at 120 volt input. Driver is dimmable with the use of Juno qualified 120 volt electronic low voltage dimmers (see attached manufacturer specification for approved dimmers). Life rated for 50,000 hours at 70 percent lumen maintenance. ADA compliant. UL listed for wet locations. IP65 rated. Fixture comes complete with housing, driver and trim. 3.3 inch width x 5 inch height x 1.7 inch depth.

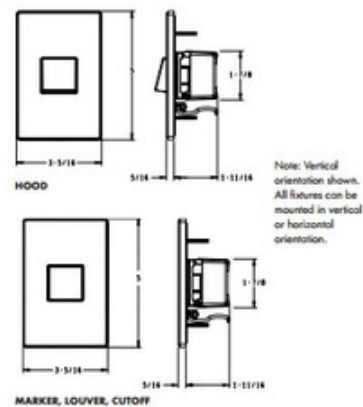


SHADE COLOR	N/A
BODY FINISH	Silver
WATTAGE	2W
DIMMER	Dimmable
DIMENSIONS	3.3"W x 5"H x 1.7"D
INTEGRATED LED MODULE	
LAMP	2 x LED/1W/120V LED

Technical Information

LAMP COLOR	3000K
-------------------	-------

SPEC # JUN111426



COMPANY	PROJECT	FIXTURE TYPE	APPROVED BY	DATE