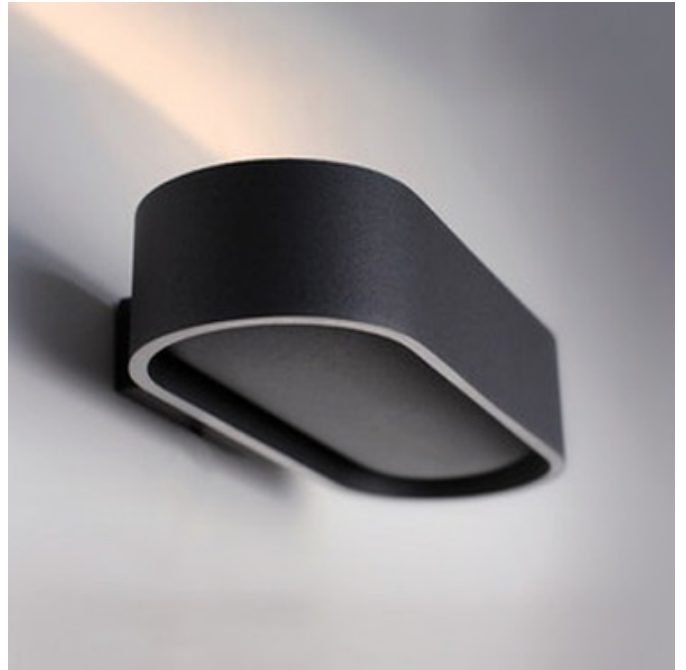


BRAND

Jacco Maris

DESCRIPTION

Solo Uplighter Wall Sconce is available in a Aluminum Anthracite, Aluminium Blank Aluminium White or Brass finish. With its minimalist design, Solo does not outspokenly call attention to itself, but in all its purity it has a quiet presence all of its own. The lamp is cast and polished by hand, which makes each one unique. The sand-like texture gives the lamp a warm, natural appearance and the halogen reflector provides a pleasant, diffuse light. One 200 watt, 120 volt T3/R7s base Halogen lamp is required but not included. 11.8125 inch width x 2.1718 inch height x 6.2968 inch depth.



SHADE COLOR	N/A
BODY FINISH	Anthracite
WATTAGE	200W
DIMMER	Standard 120V
DIMENSIONS	11.813"W x 2.172"H x 6.297"D
BULB NOT INCLUDED	
LAMP	1 x T3/R7s (RSC)/200W/120V Halogen

SPEC # JMA173392

COMPANY	PROJECT	FIXTURE TYPE	APPROVED BY	DATE