



BRAND Lightolier by Signify

DESCRIPTION

Lytecaster 2002P1 3.75 Inch Non-IC Standard Frame-In Kit is made of 20 gauge galvanized steel and will accommodate existing ceilings up to 1 inch thick. Non-IC designation requires that insulation must be kept a minimum of 3 inches away from housing. UL listed for damp locations. 9 5/8 inch length x 7.5 inch width. Overall height based on trim option selected. Lamp type and wattage dependent on trim kit and frame-in kit combination per attached manufacturer spec sheet. A complete fixture includes a trim kit and frame-in kit, sold separately.

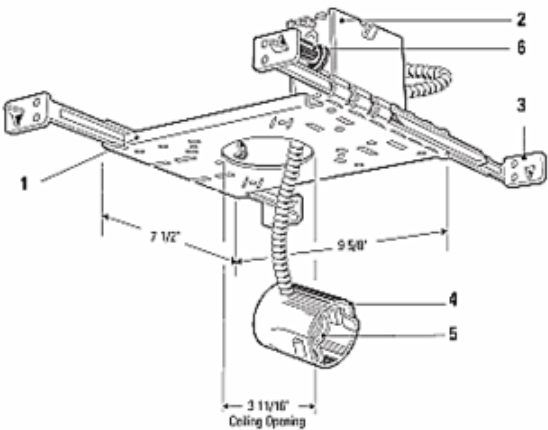


TRIM COLOR	N/A
BODY FINISH	Galvanized Steel
WATTAGE	50W
DIMMER	Dimmable
DIMENSIONS	9.6"L x 7.5"W
BULB NOT INCLUDED	
LAMP	1 x PAR20/Medium (E26)/50W/120V Halogen 1 x BT15/Medium (E26)/120V Halogen 1 x BT15/Medium (E26)/120V LED 1 x PAR20/Medium (E26)/120V LED 1 x A19/Medium (E26)/120V Incandescent

Technical Information

CEILING TYPE	Drywall with Trim
HOUSING TYPE	New Construction NON IC
HOUSING HEIGHT	6"

SPEC # LTL19226



COMPANY	PROJECT	FIXTURE TYPE	APPROVED BY	DATE