



DESIGNER

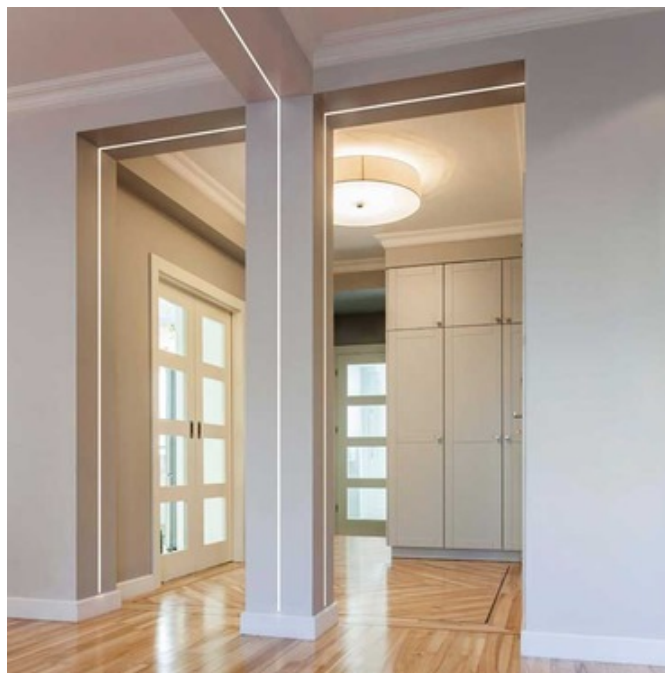
Gregory Kay

BRAND

PureEdge Lighting

### DESCRIPTION

TruLine .5A Plaster-In 24VDC LED system provides smooth and glare-free general illumination using designer-grade high CRI LEDs. TruLine .5A recesses within 5/8 inch drywall without any joist modification. The slim extrusions, LED strips, and lenses are available in 1 foot increments up to 20 feet (5 watt) or 40 feet (2.5 watt) before re-feeding and are field-cuttable. Includes 2.5 or 4.4 watts/foot LED module in a spectrum of color temperature options. Product is built to order. Can be installed on a single surface, join runs on multiple planes from wall to ceiling, or from one wall to an adjacent wall. Use TruLine .5A Build-It-Yourself (BIY) with pre-formed components to create desired configurations including mitered picture frame and outside or inside corners for room wrapping installations. Included components: TruLine .5A channel(s), LED Soft Strip, TruLine .5A Junction Box, Take-Up Box, Adjustable Mounting Bars, Mounting Strap, Power End Cap, Drywall Screw, and Lenses. System requires a 24 volt electronic low voltage (ELV) PS-60L-ELV-24VDC power supply (ELV dimming) which fits inside junction box or remote Universal (UNI) power supply (TRIAC/ELV/0-10V dimming), sold separately. Note: Required power supply, dimmer, and optional mounting components sold separately. Note: Limited quantities available.

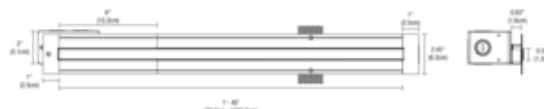


SHADE COLOR	N/A
BODY FINISH	White
WATTAGE	5W
DIMMER	Dimmable
DIMENSIONS	12"L x 2.45"W x 0.63"D
INTEGRATED LED MODULE	
LAMP	1 x LED/5W/24V LED

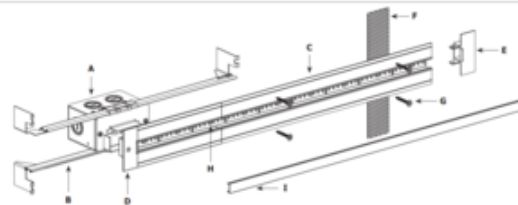
#### Technical Information

LUMINOUS FLUX	250 lumens
LUMENS/WATT	50.00
LAMP COLOR	2400K
COLOR RENDERING	85 CRI

SPEC # EDG222915



#### INCLUDED COMPONENTS



- A. JUNCTION BOX**  
Mounts behind drywall with Adjustable Mounting Bars. Low Voltage 24VDC wires from Remote Power Supply connect to LED wires inside box. Junction Box opening is covered by channel. Required at the beginning of each run and necessary to rough-in electrical before TruLine installation. Junction Box is also included with each TruLine channel order.
- B. ADJUSTABLE MOUNTING BARS**  
Provide flexibility for mounting in a variety of spaces and orientations. May be secured to studs that are spaced 13"-24" apart.
- C. TRULINE .5A CHANNEL**  
5/8" deep extrusion houses single row of LED Soft Strip.
- D. POWER END CAP**  
Provides a finished look and prevents light leak at the feed-end of a run where LED Soft Strip enters channel.
- E. TAKE-UP BOX**  
Prevents dark spots at the end of a run by tucking excess LED Soft Strip safely behind the wall.
- F. MOUNTING STRAP**  
Secures channel to drywall when wall stud is unavailable.
- G. DRYWALL SCREW**  
Secures channel to drywall and stud.
- H. LED SOFT STRIP**  
Commercial-grade White or Dynamic Color Changing LED Soft Strip.
- I. LENS**  
6.5" wide diffused white lens projects a clean line of light without LED dots.

COMPANY

PROJECT

FIXTURE TYPE

APPROVED BY

DATE

---