



BRAND

Juno Lighting

DESCRIPTION

IC44N 4 Inch Low Voltage Air Loc IC New Construction Housing is energy efficient with a sealed inner housing which does not require a separate ALG gasket. Air-Loc housing stops infiltration and exfiltration of air, reducing heating and cooling costs. Accommodates ceiling thickness up to 1 inch. Includes 120 volt to 12 volt 50VA thermally protected magnetic transformer mounted inside outer housing. One 12 volt, 50 watt GU5.3 MR16 halogen or LED equivalent lamp is required, but not included. May be dimmed using dimmers specifically designed for low voltage magnetic transformers. UL listed for through branch wiring, damp locations and IP. Trim 441, 4401, 4402 and 4481 are wet location approved for covered ceiling applications. 18.5 inch length x 9.1 inch width x 7.6 inch height. A complete fixture includes a housing and trim, sold separately.



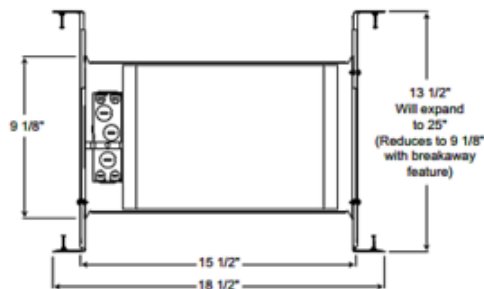
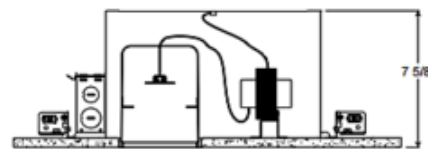
Shown in: Aluminum

TRIM COLOR	N/A
BODY FINISH	Aluminum
WATTAGE	7W
DIMMER	Low Voltage Magnetic
DIMENSIONS	18.5"L x 9.1"W x 7.625"H
BULB NOT INCLUDED	
LAMP	1 x MR16/GU5.3 (bipin)/7W/12V LED

Technical Information

CEILING TYPE	Drywall with Trim
HOUSING TYPE	New construction IC
HOUSING HEIGHT	8"
PRODUCT DIMENSIONS	Cutout: 4.50 inch

SPEC # JUN25883



4 1/2" CEILING CUTOUT

COMPANY	PROJECT	FIXTURE TYPE	APPROVED BY	DATE