



BRAND

Lightolier by Signify

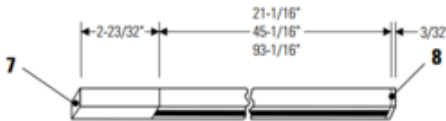
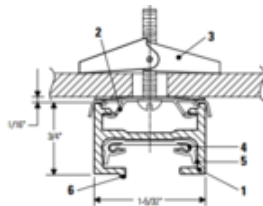
DESCRIPTION

Lytespan Basic 1-Circuit Individual Track with Live End Feed is a one circuit electrical distribution system designed to support and supply all Lytespan track heads. Includes live end feed which powers the track from the beginning of a run and Dead End cover. Knockout permits direct feed with electrical connector. Made of structural aluminum extrusion with finish in Matte White, Matte Black or Metallic Aluminum. Capacity is 20 amps at 120 volts per branch circuit (2400 watts incandescent load). Available in 2, 4 and 8 foot lengths. Toggle bolts and nylon insulators are furnished with track - two per 2 and 4 foot track and three per 8 foot track. All lengths can be field cut. cUL listed.



SHADE COLOR	N/A
BODY FINISH	Metallic Aluminum
WATTAGE	N/A
DIMMER	N/A
DIMENSIONS	96"L x 1.16"W x 0.75"H
LAMP	N/A

SPEC # LTL50009



1. Basic Lytespan Track: 6063-T5 structural aluminum extrusion.
2. Track Mounting Clips: 0.024 Spring steel, in black or white; order separately.
3. Toggle Bolt & Screws: furnished with track units.
4. Conductor (2): copper 12 ga. equivalent. "U" shape provides reliable contact with connectors.
5. Insulating Liner: 0.032" wall, high temperature thermoplastic.
6. Polarity Bead: identifies the neutral conductor.
7. Live End: molded thermoplastic. Contains contacts for power supply leads.
8. Dead End Cover: molded thermoplastic.

COMPANY	PROJECT	FIXTURE TYPE	APPROVED BY	DATE