



**BRAND**

Contrast Lighting

**DESCRIPTION**

T3152 3.5 Inch Square Downlight Pinhole Trim is made of plated die-formed steel or powder coat painted finish. Trim finish available in White, Black, Gold Plated 24K, Chrome, Brushed Chrome, Architectural Bronze, Antique Copper, Matte White, Brushed Nickel, Satin Nickel, Metallic Grey or Antique Nickel. See attached manufacturer specification for housing/trim combination options. Lamp options include 12 volt GU5.3 MR16 halogen up to 50 watts, 120 volt PAR16 LED up to 8 watts, 12 volt GU5.3 MR16 LED up to 11.5 watts, 120 volt GU10 MR16 halogen up to 50 watts, and 120 volt GU10 MR16 LED up to 9.8 watts. Use supplied glass lens only with MR16 lamps with no glass cover. UL listed. Suitable for damp locations. 1 year warranty. 3 5/8 inch ceiling cutout. 4.25 inch square x 1.2 inch height. 1.7 inch round aperture. A complete fixture includes a housing and trim, sold separately.

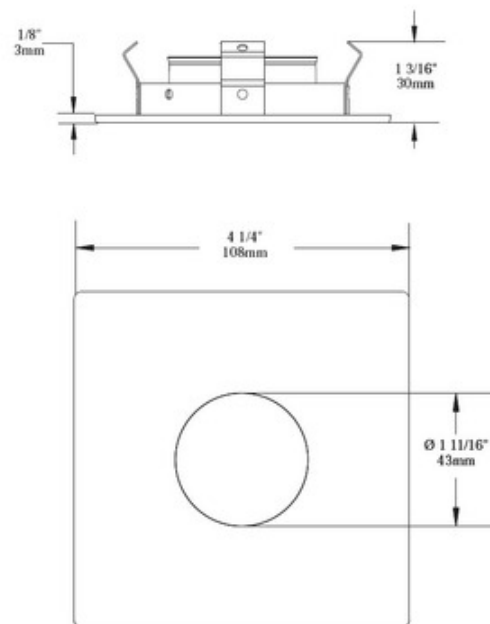


<b>TRIM COLOR</b>	N/A
<b>BODY FINISH</b>	Architectural Bronze
<b>WATTAGE</b>	50W
<b>DIMMER</b>	Dimmable
<b>DIMENSIONS</b>	4.25"W x 1.2"H x 4.25"D
<b>BULB NOT INCLUDED</b>	
<b>LAMP</b>	1 x MR16/GU5.3 (bipin)/50W/12V Halogen 1 x MR16/GU10/50W/120V Halogen 1 x MR16/GU5.3 (bipin)/12V LED 1 x MR16/GU10/120V LED 1 x PAR16/Medium (E26)/120V LED

*Technical Information*

<b>FUNCTION</b>	Downlight
<b>CEILING TYPE</b>	Drywall with Trim
<b>APERTURE SHAPE</b>	Pinhole
<b>APERTURE SIZE</b>	1.700"

**SPEC #** CLT51563



COMPANY	PROJECT	FIXTURE TYPE	APPROVED BY	DATE