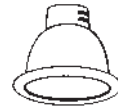
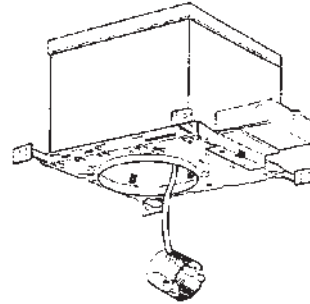
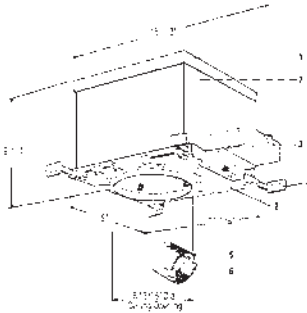


# Lytecaster® Recessed Downlighting **1100DAICM**

Page 1 of 1

6 3/4" Aperture Deep Insulated Ceiling Incandescent Frame-In Kit



Reflector Trim

Frame-in Kit

Complete Fixture consists of Reflector Trim & Frame-In Kit. Select each separately.

Frame-In Kit	Reflector Trims — See Individual Reflector Trim Specification Sheets								
	Open Downlight					Adjustable		Enclosed Diffuser	Wall Washer
	Reflector	Satin Cone	Baffles	Basic White	Cross Blade	Recessed Line Volt.	Recessed Low Volt.		
1100DAICM	1143 1144 1144CD 1145 1146 1146CD	1108† 1110†	1105† 1105WH 1176 1176WH 1179M1 1179WH 1105BNM	1170M1 1171	1132	1127† 1127BNM 1127BK† 1127WH 1127CD† 1129† 1129CD† 1129WH 1129CL† 1129BK† 1129GD† 1138† 1148†	1152 1155 1155WH 1161 1161WH 1163 1164	1121 1124 1126 1128 1134 1177SH 1178SH 1190	1135 1135WH 1185 1186 1186WH 1195 1196 1196CD
	Cone: 1112† 1113† 1113BK† 1113CD† 1113WH					Eyeball: 1122 1122WH 1123 1123WH 1182			

†Add NM to catalog number for Natural Metal flange finish.

## Features

- Housing:** Walls .032" aluminum. Cover .026" galvanized steel. UL listed for direct contact with thermal insulation. AirSeal® housing minimizes air leakage to less than 2 CFM at 1.57 PSF, which complies with Model Energy Code (Section 602.3.3) and the Washington State Energy Code (Section 502.4) and reduces heat loss and condensation in ceiling. Access door for inspection of junction box.
- Mounting Frame:** .036 (#20 ga.) galvanized steel. Accommodates all ceilings up to 1" thick. 3/8" deep integral lip. Four slots are positioned 90° apart to simplify alignment. Push-in/twist-out rotoclips hold reflector flush to ceiling.
- Junction Box:** 2" X 4" X 4": .063" (#14 ga.) galvanized steel. UL listed for maximum of 6 No. 12 ga., 90° C through branch circuit conductors. Quick release "L" shaped cover for outside access to wiring. Access door inside of housing allows easy inspection of wiring without removal of housing. Integral cable clamps permit attachment of nonmetallic, Romex® without the need for additional connectors.
- Mounting Bars:** .059" (#16 ga.) galvanized steel. Bars pivot for easy attachment and wire-in below ceiling line. Bars extend to accommodate 16" to 24" O.C. joist spacing and feature integral nail for secure attachment to wood construction. Attaches to T-bar ceilings without the need of accessories.
- Socket Housing:** Galvanized steel.
- Socket:** Porcelain medium base; nickel plated screw shell.  
Pre-wired with #18 ga. SF1 leads to junction box.
- Thermal Protector:** Meets NEC and UL requirements. Located inside housing.

## Options & Accessories

**Extra-Thick Ceiling Mounting Ring:**

**1967A** - up to 2" thick ceiling.

## Options & Accessories (continued)

**277V Remote Step-Down Transformer:** **7997** - 277V down to 120V  
300W max. load

## Labels

UL Type I.C. (Suitable for Damp Locations);

Complies with Air Leakage Requirements as stated in the Model Energy Code, California Title 24 and the Washington State Energy Code.

AirSeal® is a registered trademark of Lightolier.

Romex® is a registered trademark of General Cable Industries Inc.

## Job Information

## Type:

**Job Name:**

**Cat. No.:**

**Lamp(s):**

**Notes:**

**Lightolier** a Genlyte company

www.lightolier.com

631 Airport Road, Fall River, MA 02720 • (508) 679-8131 • Fax (508) 674-4710

We reserve the right to change details of design, materials and finish.

© 2011 Genlyte Group LLC • H0711

**LIGHTOLIER®**