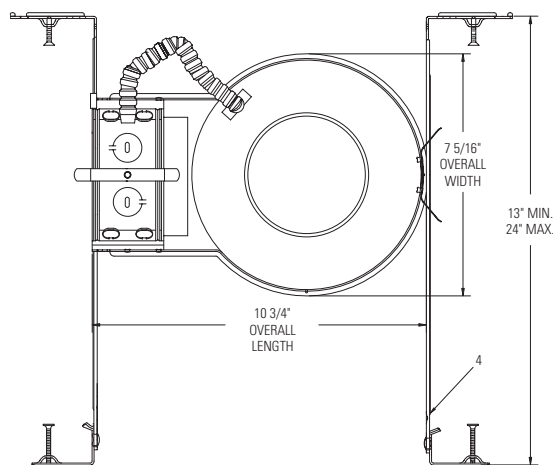
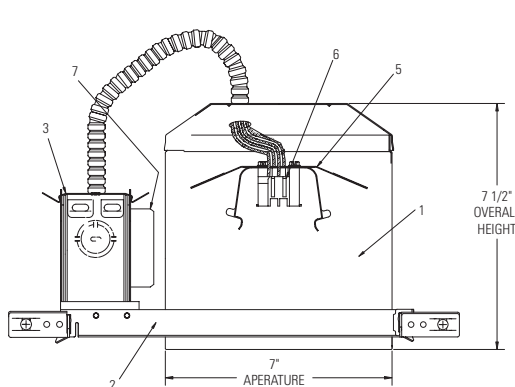


# Lytecaster® Recessed Downlighting **1104F18ES**

Page 1 of 1    6 3/4" Aperture **Lyte<sup>®</sup>ning**® 1 Lt 18W Quad/Triple Tube Compact Fluorescent IC Frame-In Kit



Ceiling Opening 7" diameter



Complete Fixture consists of Reflector Trim & Frame-In Kit. Select each separately.

Frame-In Kit			Reflector Trims — See Individual Reflector Trim Specification Sheets							
	Voltage	Lamp	Open Downlight					Enclosed Diffusers	Wall Washer	Cross Blade
			Anodized Reflector	Anodized Cone	Satin Cone	Baffles	Basic White			
<b>1104F18ES</b> <b>1104F18ESN</b>	<b>120V</b>	<b>18W Quad or Triple Tube</b>	<b>1143</b>	<b>1112</b>	<b>1108</b>	<b>1105</b>	<b>1171</b>	<b>1121</b>	<b>1185</b>	<b>1132**</b>
			<b>1144</b>	<b>1112NM</b>	<b>1108NM</b>	<b>1105BNM</b>	<b>1170M1</b>	<b>1124</b>	<b>1186</b>	
			<b>1144CD</b>	<b>1113</b>	<b>1110</b>	<b>1105NM</b>		<b>1126**</b>	<b>1186WH</b>	
				<b>1113BK</b>	<b>1110NM</b>	<b>1105WH</b>		<b>1128**</b>	<b>1135</b>	
				<b>1113BKNM</b>		<b>1176</b>		<b>1134</b>	<b>1135WH</b>	
				<b>1113CD</b>		<b>1176WH</b>		<b>1177SH</b>		
				<b>1113CDNM</b>		<b>1179M1*</b>		<b>1177LX**</b>		
				<b>1113NM</b>		<b>1179WH*</b>		<b>1178SH</b>		
				<b>1113WH</b>				<b>1190**</b>		

## Features

- Housing:** .032" (#20 ga.) UL listed for direct contact with thermal insulation. Allows installation in ceilings up to 2" thick. Can be removed for access to junction box, ballast and ceiling plenum. AirSeal® housing minimizes air leakage to less than 2 CFM at 1.57 PSF (or 75pa), which complies with Model Energy Code (Section 602.3.3) and Washington State Energy Code (Section 502.4) and reduces heat loss and condensation in ceiling.
- Mounting Frame:** .048" (#18 ga.) galvanized steel. Locks into position along length of mounting bars with locking spring and bendable slot. (3) slots 90° apart simplify alignment.
- Junction Box:** 2" X 4" X 3 1/2" (22 cu. in.) .032" (#22 ga.) galvanized steel. UL listed for branch circuit wiring supplying connected luminaires. Integral cable clamps permit attachment of non-metallic (#12 or #14 ga.) Romex® cable without tools or additional connectors.
- Mounting Bars:** .059" (#16 ga.) galvanized steel. Bars pivot for easy attachment and wire-in below ceiling line. Bars extend to accommodate 16" to 24" O.C. joist spacing. Bars can accommodate 9" O.C. joist spacing after a slight field modification (see Instruction Sheet). Features integral self-tapping phillips screws or nails for secure attachment to wood or metal construction. Attaches to T-bar ceilings without the need of accessories.
- Socket Housing:** Trim retaining spring secures trim to any height on housing wall.
- Socket:** (4 Pin, GX24q-2) base, molded thermo-plastic. Pre-wired with #18 AWG leads to junction box.
- Ballast:** Electronic 120V, end of life protected, FCC class "B" consumer limits, class "A" sound rating. Energy Star® qualified.

## Electrical

Input Watts: 19      \*Recommend Triple Tube Lamp for Optimal Performance.  
Amps: .16      \*\*Use Triple Tube Lamp Only.  
Ballast Factor: 1.0  
Power Factor: .97

## Electrical (cont.)

Max THD %: 10  
Min Start Temp: 0°F/ -18°C

## Options & Accessories

**AirSeal® Kit: LAS56 (optional)**

**Note:** Use only if factory installed tape or knockouts are removed from vertical adjustment slots in housing wall.

## Labels

UL (Type IC Suitable for Damp Locations)

Complies with Air Leakage Requirements stated in the Model Energy Code, California Title 24 and the Washington State Energy Code.

Romex® is a registered trademark of General Cable Industries Inc.

Job Information	Type:
<b>Job Name:</b>	
<b>Cat. No.:</b>	
<b>Lamp(s):</b>	
<b>Notes:</b>	

**Lightolier** a Genlyte company      www.lightolier.com  
631 Airport Road, Fall River, MA 02720 • (508) 679-8131 • Fax (508) 674-4710  
We reserve the right to change details of design, materials and finish.  
© 2011 Genlyte Group LLC • D0711

**LIGHTOLIER®**