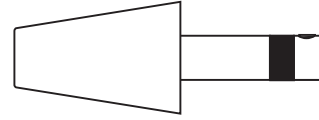


Installation Instructions for Fast Jack Male Coaxial Fixture Connector

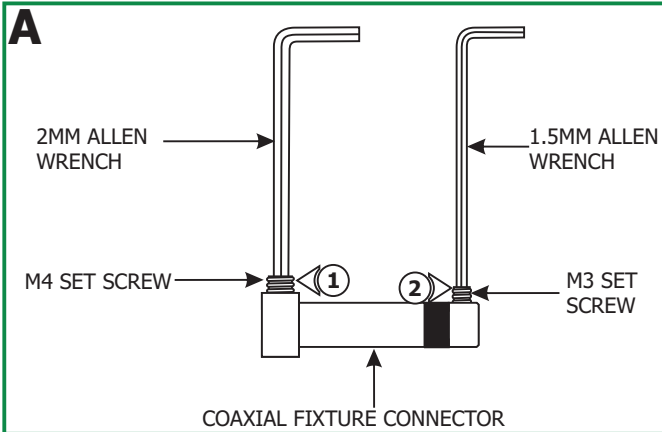
IMPORTANT INFORMATION

- This product is ETL listed for indoor dry locations.
- The product is intended to be used with Edge Lighting Fast Jack coaxial cable fixtures.

SAVE THESE INSTRUCTIONS!

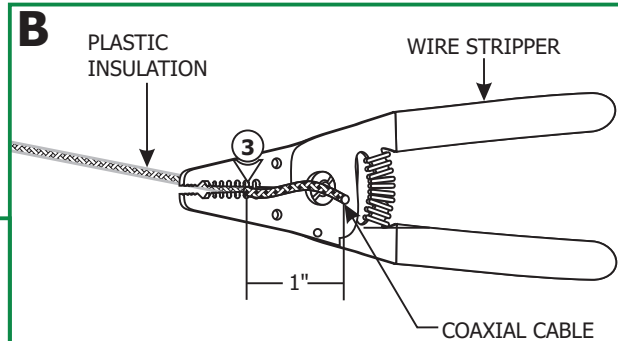


Install the Fixture Connector

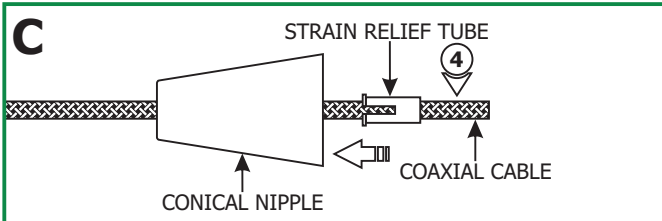


1: Loosen the M4 set screw on base of the coaxial fixture connector with the 2mm Allen wrench provided. **Do not remove this set screw.**

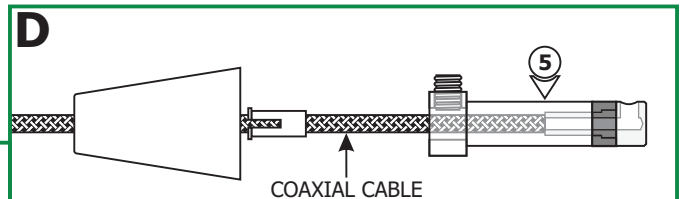
2: Remove the M3 set screw on tip of the connector with the 1.5mm Allen wrench provided.



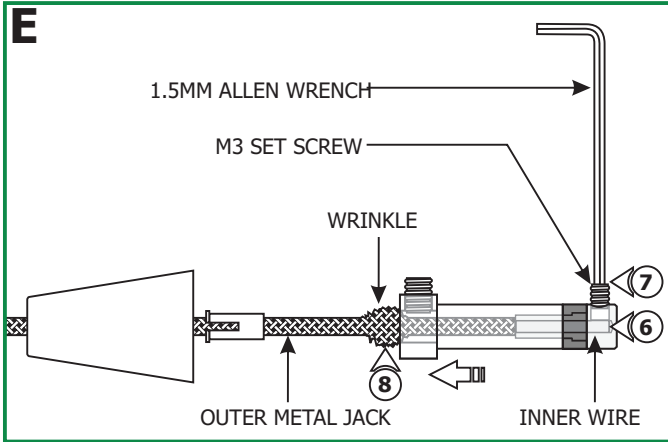
3: (OPTIONAL) For coaxial cables with insulation, use the #12 gauge hole of AWG wire strippers to strip 1" of the plastic insulation from the end so that the bare coaxial cable is exposed.



4: Feed the coaxial cable through the conical nipple and flared side of the strain relief tube. Slide the conical nipple and strain relief tube down the coaxial cable.



5: Feed the coaxial cable into the coaxial fixture connector. The coaxial cable will come to a stop point.



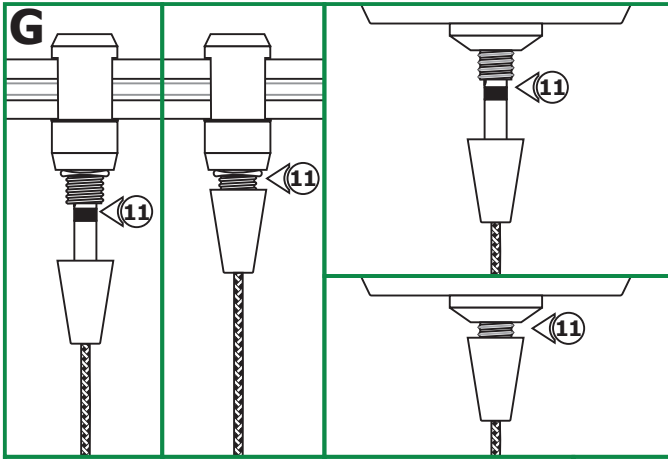
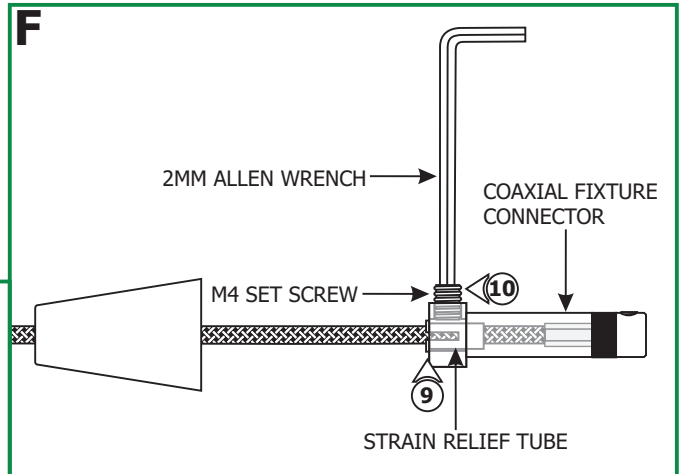
6: Keep feeding the coaxial cable in until the inner wire is visible in the screw hole of the fixture connector tip. The outer metal jacket will start to wrinkle.

7: Hold the fixture connector in place. Replace and tighten the M3 set screw on fixture connector tip with the 1.5mm Allen wrench.

8: Pull down the outer metal jacket to smooth the wrinkles.

9: Push the strain relief tube completely into the coaxial fixture connector. Make sure the slot on the strain relief tube is not inline with the M4 set screw.

10: Tighten the M4 set screw with the 2mm Allen wrench.



11: Use fingers to tighten the Fast Jack fixture connector into the Fast Jack system connector (Monorail, Monorail Wall, Monorail 2 Circuit, or canopy connector - Refer to the instructions provided with the system connector or canopy).

12: Refer to the instructions provided with the Monorail 2 Circuit fixture connector to choose the Circuit #1 or Circuit #2.

