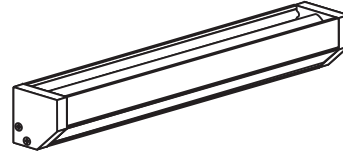


Installation Instructions for 45° Light Channel

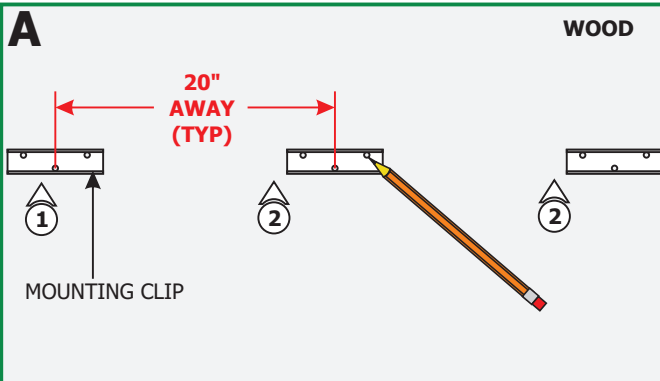
IMPORTANT INFORMATION

- 45 degree channel comes 12" to 120" long in a single piece. Multiple 45 degree channels can be connected together in series or parallel by connecting the 8ft pigtail wires. These wires are rated for CLASS 2 (through the wall) installation. Maximum 25' of the 45 degree channels could be connect together when TEB-75L-24DC (Electronic low voltage dimming) power supply is used, or 40' if the PSB-96W-010-24VDC (0-10 dimming) is used.
- This instruction shows typical installation.



SAVE THESE INSTRUCTIONS!

Install the Light Channel

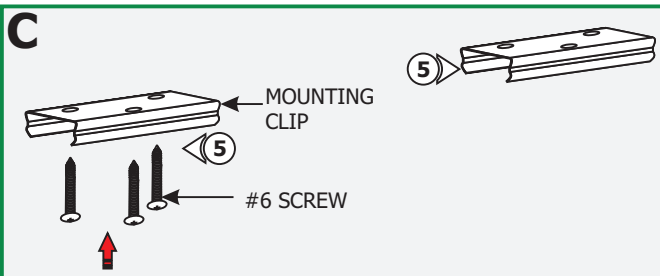
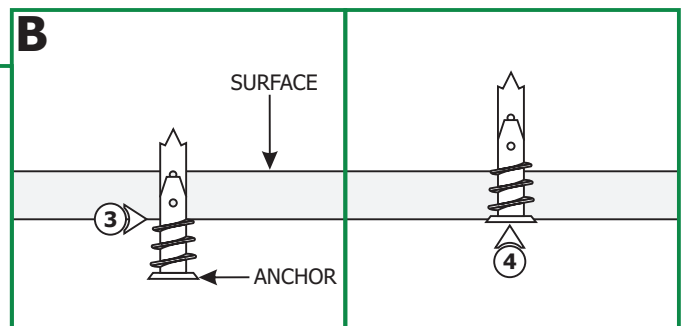


NOTE: Remote power supply must be installed within 40 feet. The low voltage 24VDC, Class 2 Wires must be present before installing the channel. Refer to the installation instructions provided with the power supply or general diagram on page 2.

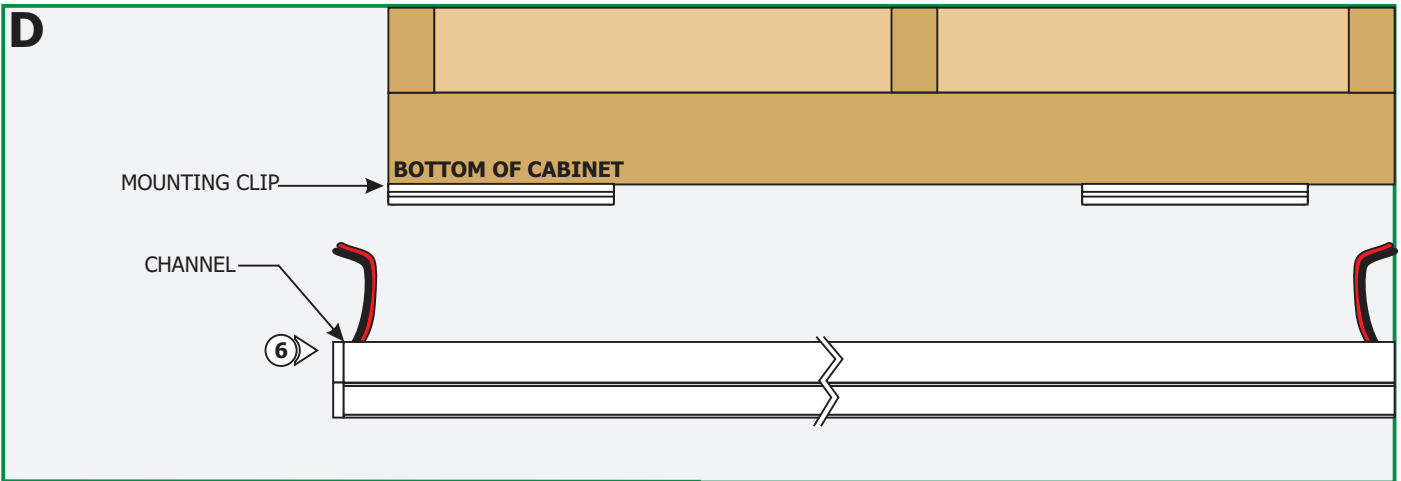
- 1: Determine the location for the Light Channel.
- 2: Place the clips on the surface every 20" (measure from the center slot of the mounting clip) and mark the screw locations.

NOTE: Steps 3 to 4 are for drywall mounting. Omit these steps if mounting the clips to a wood surface directly. **ANCHORS ARE NOT PROVIDED.**

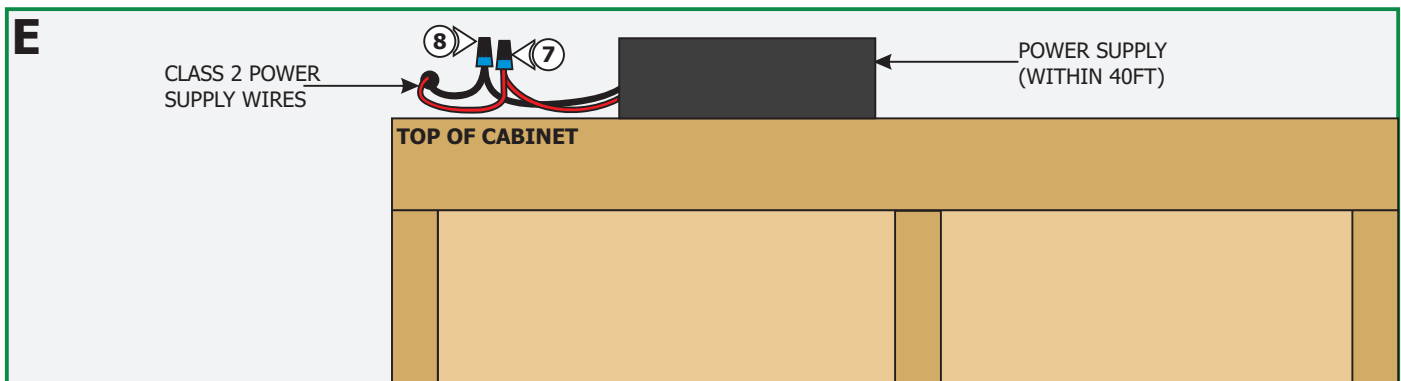
- 3: Tap the anchors onto the marked points up to the threaded portion with a hammer.
- 4: Screw in the threaded portion of the anchors with a Phillips screwdriver.



- 5: Line up the mounting clips to the anchors and secure it to the anchors by tightening the three #6 screws to each clip.

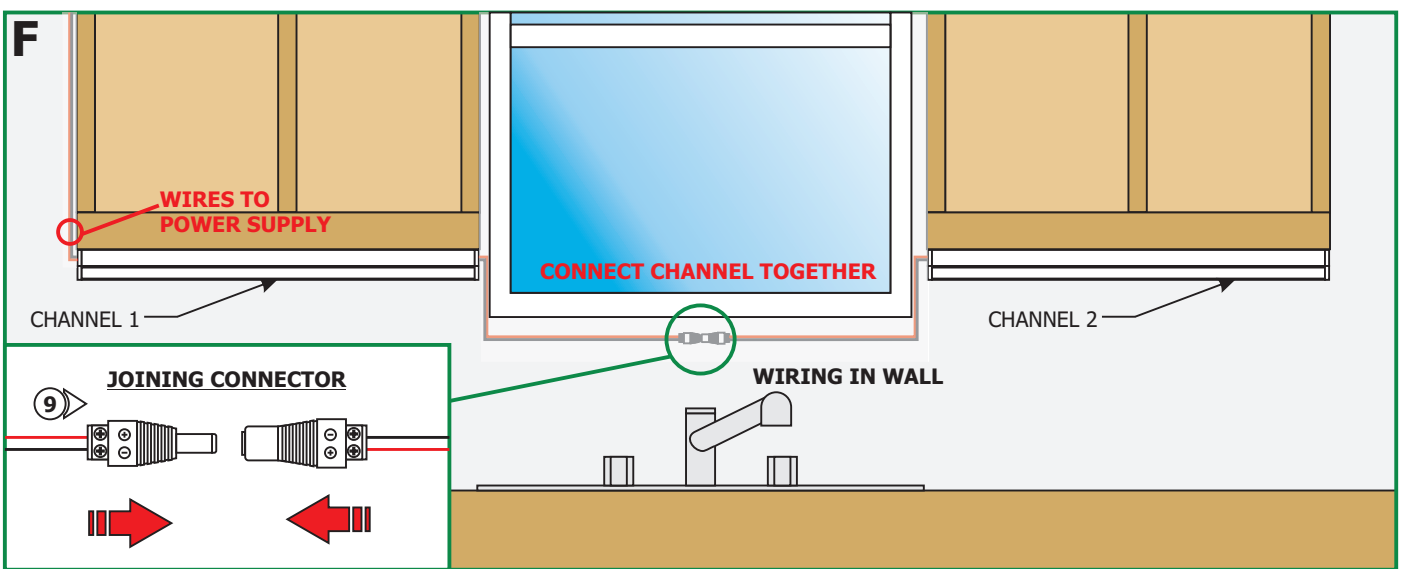


6: Choose the cord on one end of the channel that is the closest to the class 2 wiring.

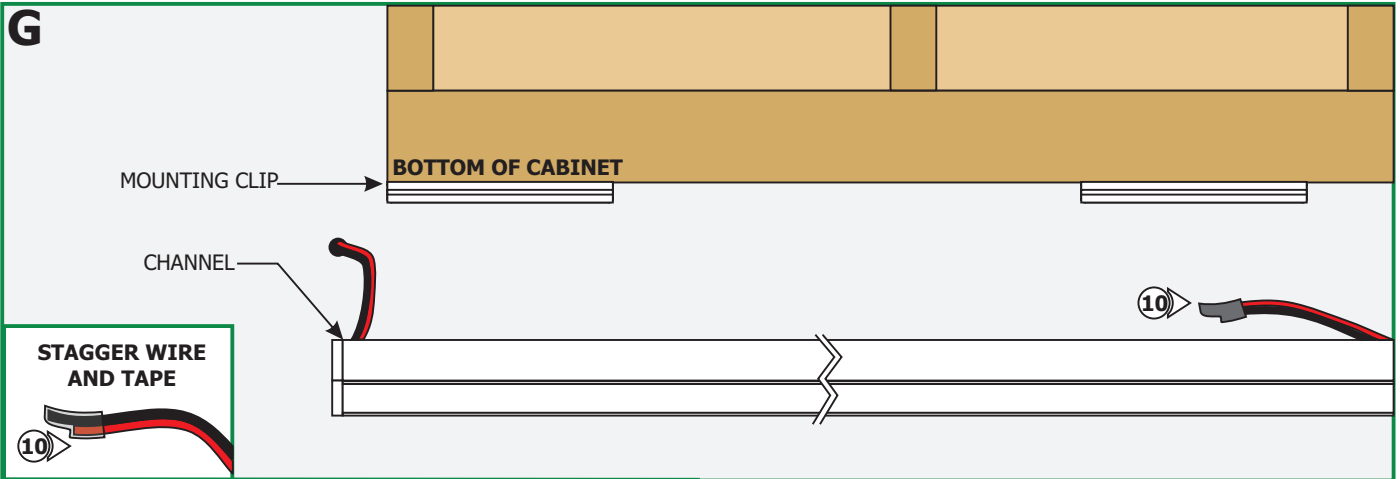


7: Connect the red power supply (24VDC+) wire to red strip wire with a wire nut inside the electrical box.

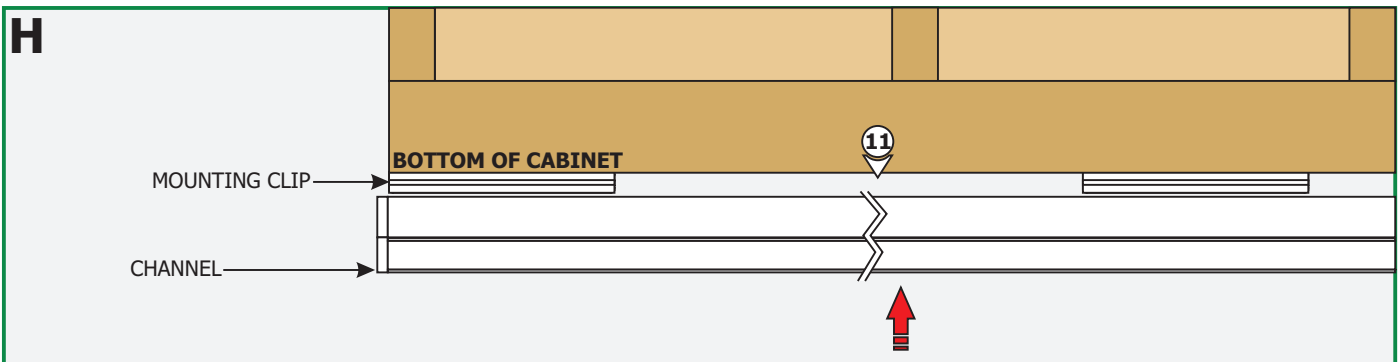
8: Connect the black power supply (24VDC+) wire to black strip wire with a wire nut inside the cabinet.



9: Optional: If power feeding one channel from the other, then wire the male & female connectors provided. Connect the red wires to "+" & black wires to "-" terminals.



10: Cut the unused cord staggered leaving 2" exposed. Wrap the end of the unused cord with electrical tape.



11: Snap each Light Channel properly into the mounting clips.

GENERAL WIRING DIAGRAM

