



Description: Reveal Wall Wash is a plaster-in, dimmable LED system that mounts within a 5/8" drywall ceiling 24" away from projected wall. System mounts directly to studs or between studs without joist modification. Multiple runs of channel mount seamlessly together, and may wrap inside corners to wash surrounding walls with uniform controlled illumination up to 95+ CRI. Fixture may be ordered in 5, 7, or 10 watts per ft. and requires a separate power feed every 100 watts. Channel is sold in 1 foot increments and may be field-cut to any length. LED Soft Strip may be cut every 2.4 inches. Fixture includes a 5 year warranty. Patent pending.

Design Notes: Wall Wash segments link seamlessly to provide uniform illumination on walls and in corners. A separate power feed is required every 20 feet (5WDC), 13 feet (7WDC), or 10 feet (10WDC).

Applications: Indoor Only — Wall wash, general lighting and retail applications

Lamp:

Watts per Foot	Lumens per Watt	Lumens per Foot	85+CRI 24k, 35K, 40K, 57K	95+CRI 27K, 30K	RGB
5WDC	51	210	•	•	•
7WDC	48	320	•	•	
10WDC	46	411	•	•	

Lumen values are based on the 3000K LED test.

Average Lamp Life: 50,000 hours

Power Supply: White LED system, compatible Electronic Low Voltage Dimming (ELV) 120-277VAC input: PSB-60W-ELV-24VDC (24VDC 60W output) | PSB-100W-ELV-24VDC (24VDC 100W output) | PSB-2X100W-ELV-24VDC (24VDC 2X100W output).

White LED system, compatible 0-10 Volt Dimming (010) 120-277VAC input: PSB-96W-010-24VDC (24VDC 96W output) | PSB-2X96W-010-24VDC (24VDC 192W output).

In Wall Mounting Kits: PSC-IW-KIT1 (96W or 100W) | PSC-IW-KIT2 (2X96W or 2X100W).

RGB LED System: Remote RGB Power supply with DMX Driver 100W: 120-277VAC input; 200W and 400W: 120/240VAC input PSB-100W-24VDC-RGB (24VDC 100W output) | PSB-200W-24VDC-RGB (24VDC 200W output) PSB-400W-24VDC-RGB (24VDC 400W output)

Dimming and Control: White LED system dimmable with 0-10V dimmer using power supplies above. Radio Ra2 (with GRX-TVI), Grafik Eye Qs (with GRX-TVI), Diva (with PP20); Nova T; Philips: Sunrise SR1200ZTUNV; Leviton: IP710-DL. RGB LED system - Touch Screen Controller with Power Supply (CTP), or Color Dial Controller with Power Supply (CDP).

Included Components: Reveal Wall Wash channels, LED Soft Strip, Reveal Wall Wash Junction Boxes and all mounting hardware.

REVEAL, WALL WASH 24VDC ORDERING CODES

REVEAL WALL WASH CHANNEL

System	Wattage	Length in Feet	Color Temperature
RVWW	5WDC	20FT	27K
RVWW Reveal Wall Wash	5WDC 5 Watts/Foot	1-20 Feet	24K 2400K Amber White
	7WDC 7 Watts/Foot	7WDC Up to 13ft	27K 2700K Very Warm White
	10WDC 10 Watts/Foot	10WDC Up to 10ft	30K 3000K Warm White
			35K 3500K Neutral White
			40K 4000K Cool White
			57K 5700K Daylight White
			RGB Red, Green and Blue (5 Watt Only)

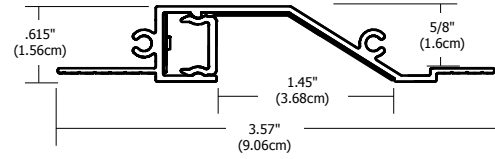
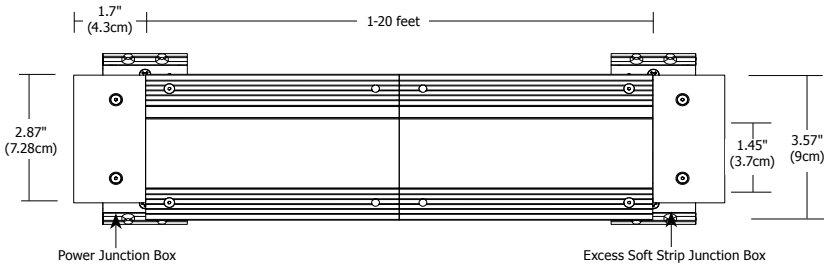
REVEAL WALL WASH CONNECTOR

System	Connector
RVWW	L
RVWW Reveal Wall Wash	L L Corner
	CFJB Center Feed J Box

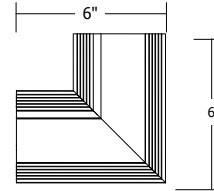
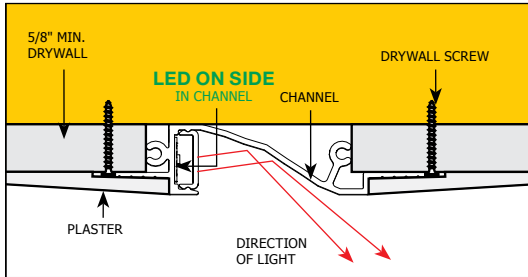
COMPANY		FIXTURE TYPE		DATE	
PROJECT		APPROVED BY			

Product specification subject to change without notification. REV. 07.18.14



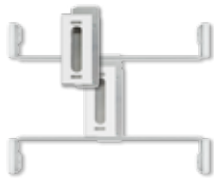


SIDE VIEW



RVWW-L
Reveal Wall Wash
Channel L- Connector
LED not included

INCLUDED COMPONENTS



REVEAL JUNCTION BOXES

Power Junction Box: Slim profile junction box mounts behind drywall. Low voltage DC wires from remote power supply connect to LED wires. Junction box opening covered by Reveal Wall Wash Channel.

Excess Soft Strip Junction Box: Prevent dark spots at end of run by tucking excess LED Soft Strip safely behind wall.



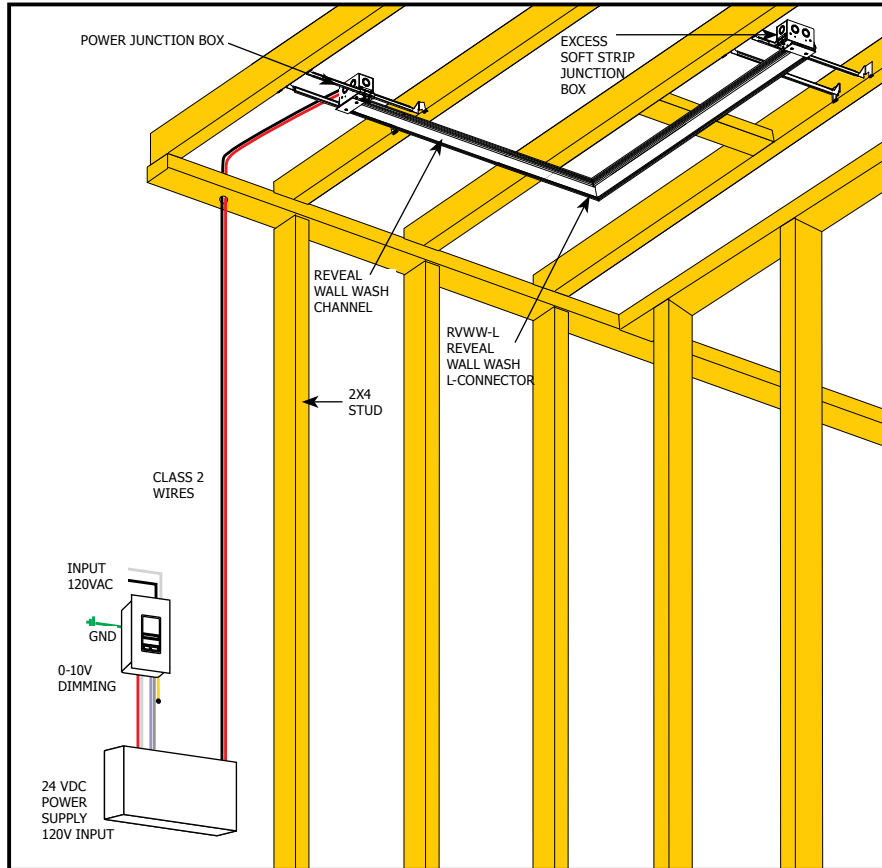
LED SOFT STRIP

Commercial grade white or RGB LED Soft Strip. See Lamp data on page 1 of spec sheet for additional details.

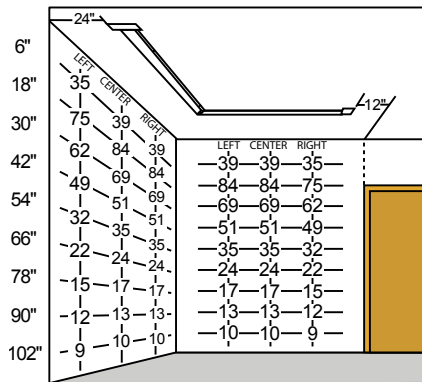
COMPANY		FIXTURE TYPE		DATE	
PROJECT		APPROVED BY			

Product specification subject to change without notification. REV. 07.18.14

REVEAL WALL WASH APPLICATION



REVEAL WALL WASH FOOT CANDLE CHART
SHOWN WITH 7 WATT 3000K



COMPANY		FIXTURE TYPE		DATE	
PROJECT		APPROVED BY			

Product specification subject to change without notification. REV. 07.18.14