

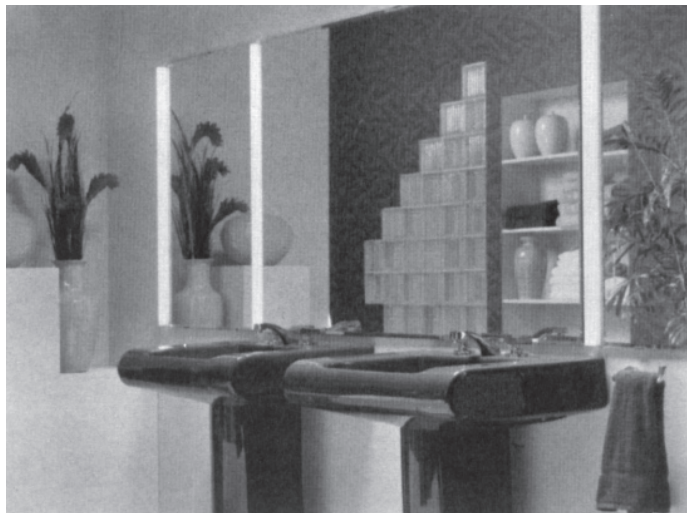
Lincandescent

Recessed Linear Accent Luminaire

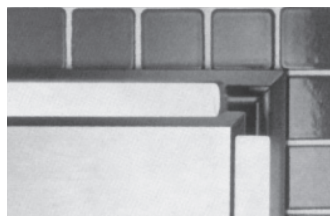
Incandescent

RL Series

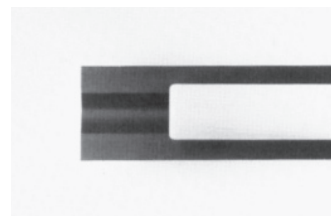
Project	Type
Project Location	
Catalog #	



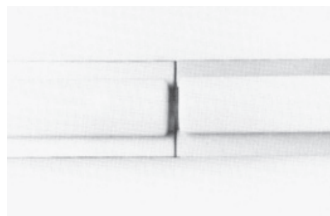
- Continuous lengths of warm incandescent illumination
- Recessed design creates 'fixtureless' appearance integral with mirror.
- Select from a variety of finishes including polished chrome, polished gold, polished black, etched silver; etched gold, etched black or special painted finishes.
- No end-caps to break integrity of design; hairline seams in row mount installations.
- Lamps available in 20" or 40". Faceplate extrusion can be specified in custom lengths up to 12" longer at each end.
- Internal leaf-spring leveling mechanism for perfect "after installation" alignment to finished mirror surface.



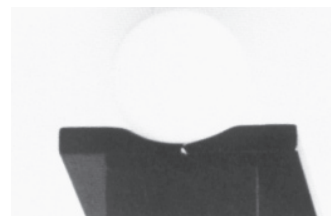
Field mitring capability.



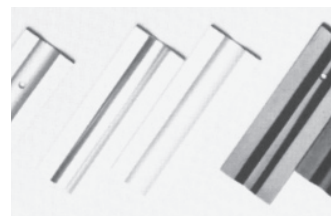
Custom length runs.



Hairline butt seams.



1/4" thick faceplate to match plate glass mirror.



11500 Melrose Avenue Franklin Park, Illinois 60131

Phone: 847-451-0700 Toll-Free: 1-866-50ALKCO

Fax: 847-451-7512 www.alkco.com 09/12

© 2010 Alkco Lighting. All rights reserved. Product designs protected by copyright. We reserve the right to change details of design, materials and finishes.

PHILIPS
ALKCO

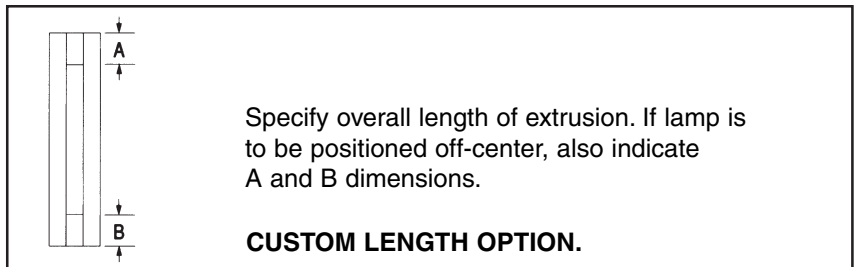
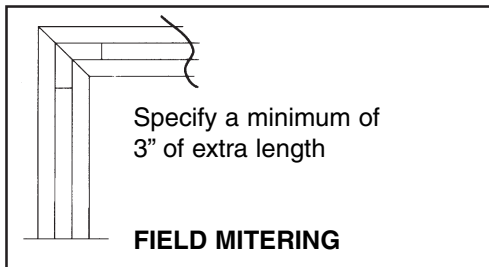
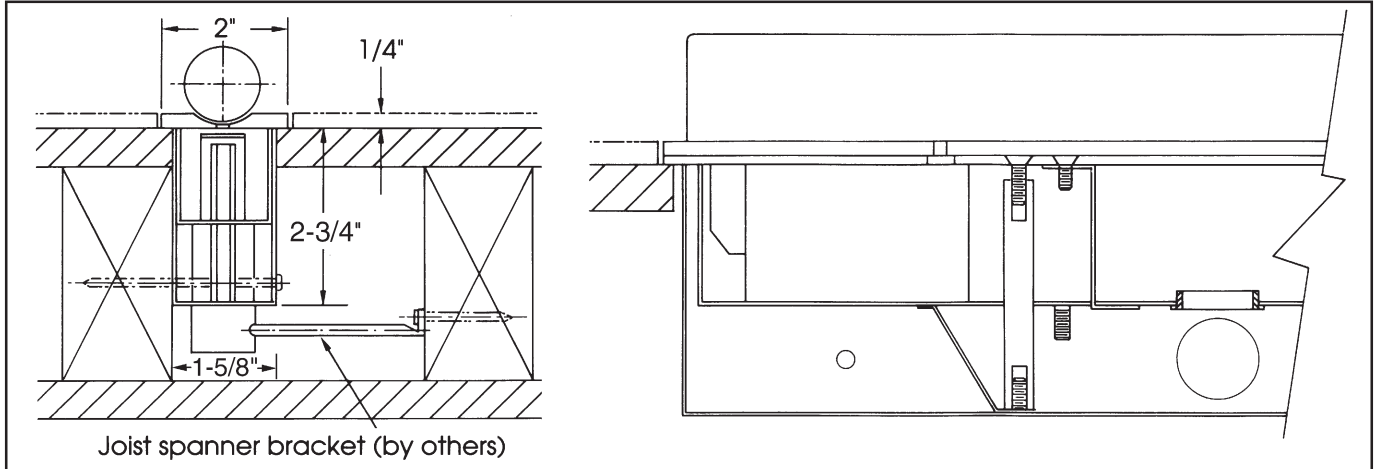
Lincandescent

Recessed Linear Accent Luminaire

Incandescent

RL Series

Project	Type
---------	------



SPECIFICATIONS

CONSTRUCTION

1/4" thick extruded aluminum faceplate and 20 gauge cold rolled steel recessed housing.

ELECTRICAL

(2) concealed sockets. Safety switch automatically disconnects electricity upon lamp removal. 120 Volt only. 277 and 347 Volts not available.

DIMMING

For the best results use autotransformer type dimmers. Better quality solid state incandescent dimmers may be used, but audible filament hum may be objectionable in some installations (especially with 150 watt lamps) and lamp life may be adversely affected.

FINISHES

Satin etch or polished specular silver, gold, or black anodized finishes. Special painted finishes may be specified.

INSTALLATION

Housing can be fastened

directly to building material or to joist spanner bracket (by others). Leaf-spring leveling mechanism allows vertical adjustments to be made after housing and faceplate are installed to optimize alignment with adjacent mirror surface. (3) knockouts, one in each end and one in center of housing are provided for electrical supply. **NOTE: for horizontal and field mitered installations:** Mounting Recessed Lincandescent fixtures in a horizontal orientation requires special framing of wall studs. Mitering the faceplate extrusion requires a skilled craftsman.

LABELS

U.L. damp location and IBEW

LAMPS

60 or 150 watt Linear Incandescent lamp with 1000 hour average rated life included.

ORDERING INFORMATION

Fixture	Description	L	W	D
RL20	60 watt fixture	19 11/16"	2"	2 3/4"
RL40	150 watt fixture	39 3/8"	2"	2 3/4"

FINISHES (must add as suffix)

PC	POLISHED CHROME
PG	POLISHED GOLD
PB	POLISHED BLACK
ES	ETCHED SILVER
EG	ETCHED GOLD
EB	ETCHED BLACK
WBE	WHITE BAKED ENAMEL
SPF	SPECIAL PAINT FINISH (SUBMIT PAINT SPECS AND SAMPLE)

CUSTOM LENGTH (add as suffix)

Specify in fractional inches as required

NOTES:

Factory tolerances +0"/-1/8"

Custom lengths is provided for finish trim only-not lamps

Lamp will be centered in extrusion unless otherwise indicated.

For field mitering, order a minimum of 3" extra length at ends of fixture.

LAMPS		RATED LUMENS
L20	60 Watt Linear Incandescent Lamp	460
L40	150 Watt Linear Incandescent Lamp	930

ORDERING EXAMPLE

40" FIXTURE IN POLISHED SILVER FINISH, LENGTHENED TO 50" WITH LAMP POSITIONED OFF-CENTER WITH 8" AT TOP AND 2-5/8" AT BOTTOM.

RL40-PS/50" WITH 8" AT TOP AND 2-5/8" AT BOTTOM.

MIRROR LIGHTING APPLICATION NOTE:

Because linear incandescent lamps produce a soft quality of illumination, it is often desirable to provide general lighting to supplement Lincandescent luminaires. See rated lumens in lamp ordering information and compare to other familiar lamp types.