

# ALPINE - INDOOR/ OUTDOOR

REV.04.20.15



## Description:

The geometric Alpine Wall provides bidirectional light above and below the fixture. The fixture is rated for indoor, outdoor and wet applications.

## Finish:

Satin Aluminum

## Lamp Specification:

**HALOGEN (H1)**

H1 - 2xMR16/GU10/20W

## Total Wattage:

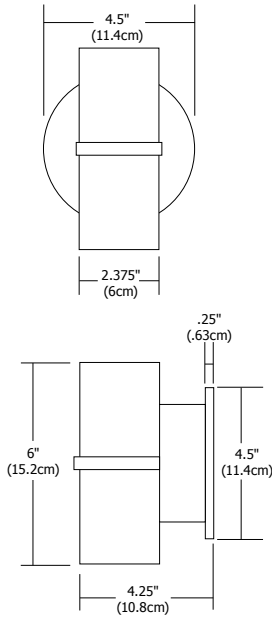
40W

## Dimming Information:

Incandescent

## Weight:

2.5 lb (1.13 kg)



PROJECT:

FIXTURE  
TYPE:

DATE:

