

Installation Instructions for SS2P Premium LED Soft Strip 2.3W/ft 24 Volt

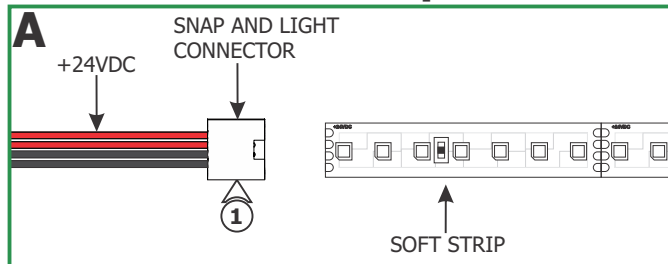
IMPORTANT INFORMATION

- This product is ETL listed for indoor locations.

SAVE THESE INSTRUCTIONS!



Install the Soft Strip

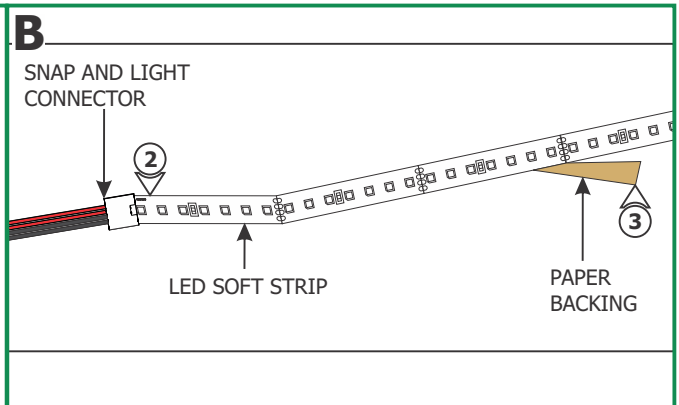


NOTE: Aluminum heat sink tape (SS-HR-F) is sold separately to help dissipate heat generated by LEDs.

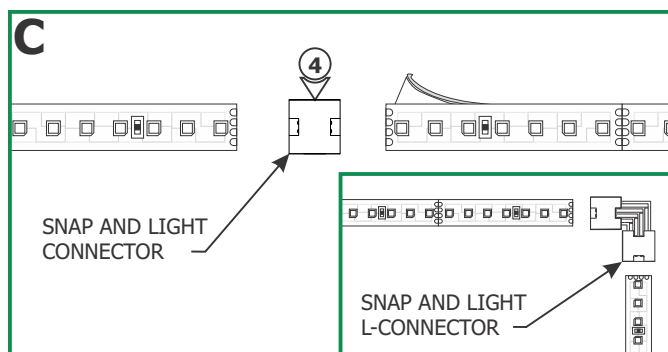
1: Align the Snap and Light connector +24VDC wires with the +24VDC markings on the LED soft strip.

NOTE: Avoid bending the soft strip in sharp angles which may damage the LEDs. Soft Strips do not bend at 90° angles to itself. Use proper directional connectors for 90° turns.

- 2:** Refer to installation instruction included with Snap and Light connector to complete power connection to Soft Strip.
- 3:** Carefully remove the backing from the LED soft strip, make sure not to remove the tape from the soft strip. Firmly press down the adhesive portion of the soft strip onto the mounting surface while removing the rest of the backing, making sure there are no air bubbles that can cause surface irregularities.



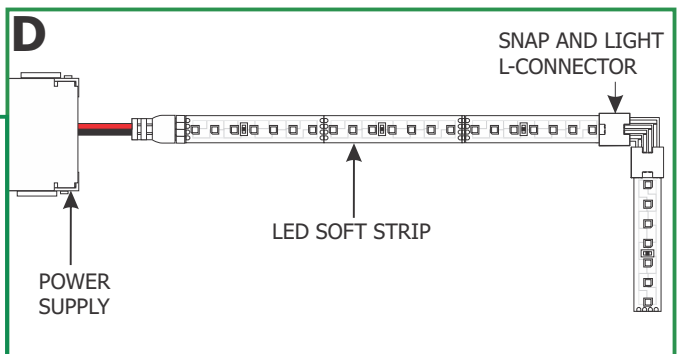
4: Join additional sections of soft strip using Snap and Light straight or directional connectors. Refer to Snap and Light installation instructions.



5: Cut excess soft strip at cut lines **ONLY**. Once the soft strip is cut, it cannot only be extended using Snap and Light connectors (sold separately, refer to included instructions).

6: Install the power supply. Refer to instructions included with the power supply.

NOTE: SS2P soft strip consumes on average 2.3 Watt per foot.



IMPORTANT INFORMATION REGARDING INSTALLATION AND REWORK OF SOFT STRIP LED

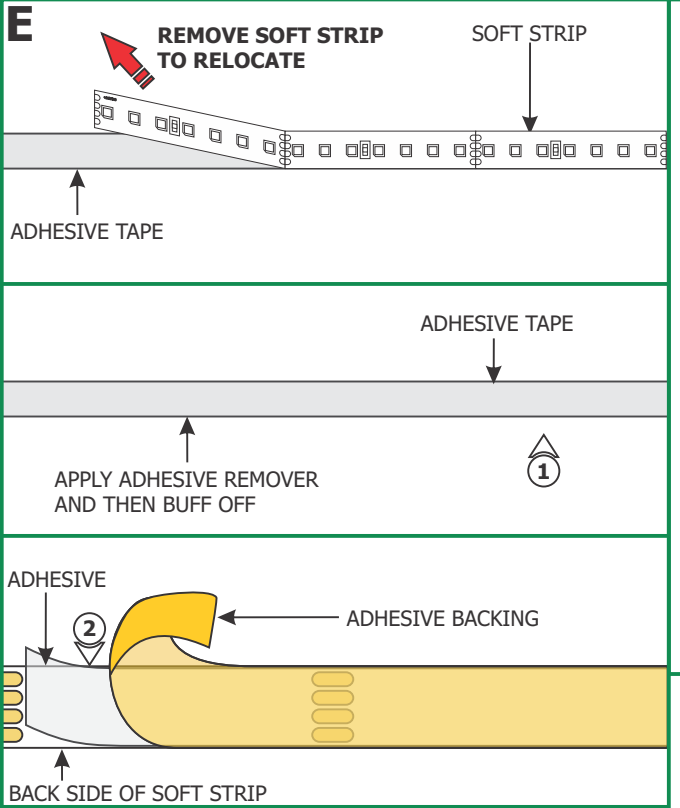
DO gently pull up and away from the soft strip if removing to reposition. This avoids damaging the strip.

DO NOT pull the strip back towards itself. Doing so risks damaging the strip and making it not function.

DO only ever use fingers to gently install soft strip to a surface **AFTER** cleaning the surface with alcohol.

DO NOT use any tool to install soft strip to a surface. This will damage the soft strip component.

Relocating Soft Strip (Optional)



NOTE: If relocating the installed soft strip, make sure that the adhesive tape on back of the soft strip covers the entire strip. The adhesive tape isolates the strip from the installation surface. Damaged or inconsistent adhesive tape may cause the contacts on the back of the strip to come in contact with the conductive heat sink which will cause the strip to short and burn. Call Edge Lighting to get replacement adhesive tape and/or optional aluminum heat sink tape (SS-HR-F)

- 1:** To remove tape residue from back of the strip, apply WD-40, Goo Gone, or a mixture of warm water and lemon oil to the corner of a clean, dry towel. Gently buff the area containing the adhesive residue until it is completely removed.
- 2:** Gently remove a few inches of the from one side of the tape backing. Attach the adhesive tape to the back of the soft strip and apply moderate pressure to affix the tape. Continue this step a few inches at the time until the entire adhesive tape is attached to back of the soft strip.
- 3:** Refer to the steps on 1 through 8 to reinstall the soft strip.

Wiring Diagram

