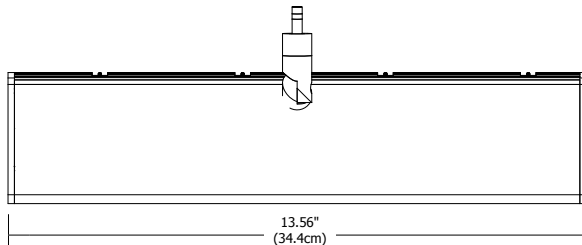
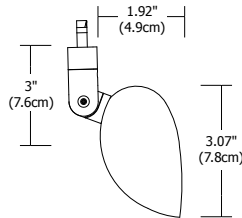




Designed by Gregory Kay & Aaron O' Brien - Patent Pending

Compatible System Connectors



Description:

Providing uniform direct lighting for vertical surfaces, the Nautilus LED wall wash is ideal for retail displays, galleries/museums or offices, the fixture provides efficient illumination without UV, IR or the use of mercury. The cool-to-touch fixture allows manual locking of 360° rotation and 180° tilt to evenly wash a wall up to 4' (1.2m) wide from a 2' (0.6m) distance. Fixture includes a 5 year warranty.

System Compatibility:

Mounts to any 12VAC Monorail or Monorail 2 Circuit. Use Fast Jack connector for ordering **LED** canopy mount and **LED** track transformer

Finish:

Satin Nickel, Polished Nickel, or White

Lamp Specification:

34.8 watts 12VAC, **LED** 2949K, 84CRI, 782 lumens, 70% lumen maintenance based on 50,000 hours of operation

Dimming Information:

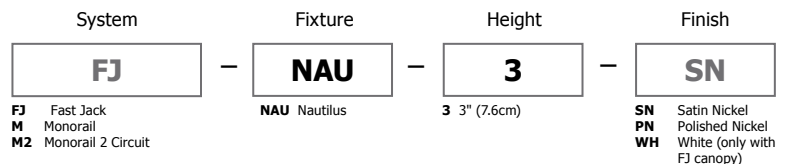
Dimmable with Lutron Skylark or Diva and Lightolier Sunrise low voltage dimmers. For up-to-date dimming information, see dimming chart on www.edgelighting.com

Weight:

2.4 lb (1 kg)



2009 Next Generation Luminaires Recognized Winner



PROJECT:

FIXTURE TYPE:

DATE:



REV.10.14.16



Efficacy
22.5 Lm/W

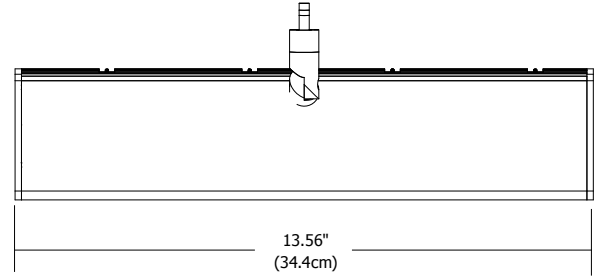
CCT
2,949K

Wattage
34.8 watt LED

CRI
84

Lumens
782

Rated Life
50,000 Hrs.



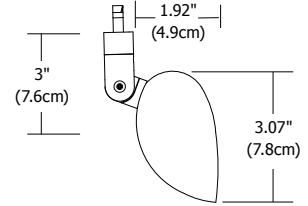
Foot Candles on Wall

2' From Wall

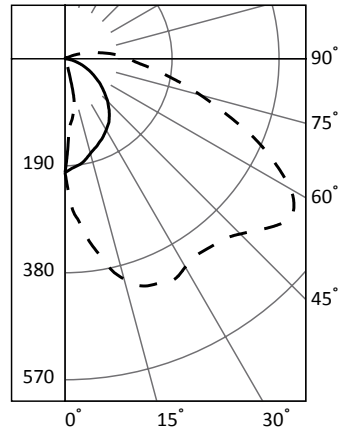
DISTANCE FROM CEILING	2'			3'		
	0	1	2	0	1	2
0	40	38	40	32	24	32
1	109	99	109	89	62	89
2	80	76	80	60	49	60
3	45	44	45	33	30	33
4	27	26	27	19	18	19
5	16	16	16	12	11	12
6	10	10	10	8	7	8
7	6	6	6	5	5	5
8	5	5	5	4	4	4

3' From Wall

DISTANCE FROM CEILING	3'			4'		
	0	1	2	0	1	2
0	20	19	20	17	13	17
1	45	41	45	38	26	38
2	49	45	49	41	29	41
3	33	32	33	27	23	27
4	23	22	23	18	17	18
5	16	16	16	13	12	13
6	11	11	11	9	8	9
7	8	8	8	6	6	6
8	6	6	6	5	5	5



Candlepower Distribution



LEGEND:
 0-deg: ————
 90-deg: ————
 180-deg: - - - - -

Coefficients of Utilization - Zonal Cavity Method

Effective Floor Cavity Reflectance .20

RC	80		70		50		30		10		0	
	70	50	30	10	70	50	30	10	50	30	10	0
0	118	118	118	118	114	114	114	114	108	108	108	95
1	105	99	94	89	101	96	91	87	91	87	83	74
2	94	84	76	70	91	82	75	69	78	71	66	59
3	85	73	64	56	82	71	62	56	67	60	54	48
4	77	64	54	47	74	62	53	46	59	51	45	40
5	71	57	47	40	68	55	46	39	52	44	38	34
6	65	51	41	34	63	49	40	34	47	39	33	29
7	60	46	36	30	58	45	36	30	43	35	29	26
8	56	42	33	26	54	41	32	26	39	31	26	23
9	52	38	29	24	50	37	29	23	36	28	23	20
10	49	35	27	21	47	34	26	21	33	26	21	18

CU values are based on the total absolute lumen output of this luminaire. All candela, lumens, luminance, and VCP values are based on absolute photometry. The zonal cavity calculation technique is accurate when luminaires with symmetric candela distributions are employed and when the luminaires are located symmetrically throughout the room. This unit has special characteristics and therefore these coefficients should be used with caution.

Verify our Light Output Comparison Chart by downloading the Energy Star Program Requirements for Integral LED Lamps. Go to www.edgelighting.com/products/lighting_tools.php.