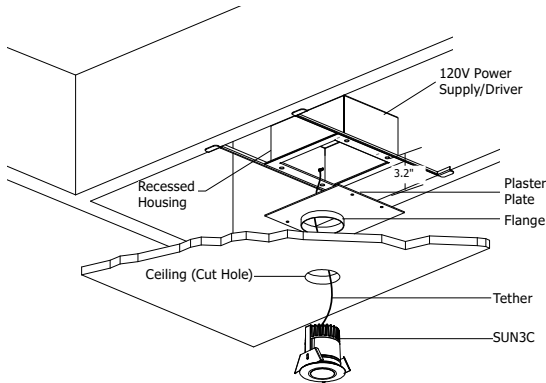
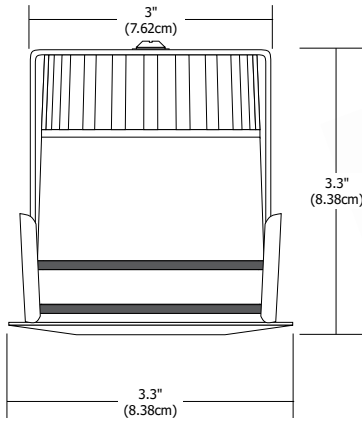


SUN3C CEILING LED DOWNLIGHT COMPONENTS - INDOOR/OUTDOOR

REV.02.06.17



Description:

The 3 inch round or square recessed SUN3C LED downlight uses a high powered warm white LED; it features a 16, 23, 36 or 47 degree precise focus and tempered glass lens with marine-grade aluminum beveled edge trim. It is perfect for installation on ceilings with a low clearance (3.2 inch depth). Sun3C is rated for outdoor, ocean front, wet location, shower or indoor applications. New construction IC-Rated housing (SUN3-HS), with dimmable electronic power supply, is sold separately. Fixture includes 5 year warranty.

Finish:

Satin Aluminum

Lamp Specification:

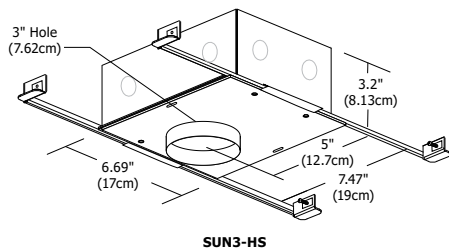
9.5 System Watts; 7 LED Watts, 12VAC LED, 2858K, 85 CRI, 322 total lumens, 46 lumens per watt; 70% lumen maintenance based on 50,000 hours of operation.

Dimming:

Dimmable with low voltage electronic dimmer using SUN3-HS (sold separately). Lutron dimmers recommended: Dims to 12% with Diva #DVELV-300P and with Skylark #SELV-300P; 20% with Maestro #MAELV-600

Weight:

1.8 lb (.82 kg)



Product	Type
SUN3	HS
SUN3 Sun3	HS Housing

Product	Head/Lens	Description	Color Temperature	Finish
SUN3C	HDL1	RD	WW	SA
SUN3C Sun3 Ceiling	HDL1 16 Degree Lens HDL2 23 Degree Lens HDL3 36 Degree Lens HDL4 47 Degree Lens	RD Round SQ Square	WW Warm White	SA Satin Aluminum

PROJECT:

FIXTURE
TYPE:

DATE:



REV.02.06.17



Sun3 Louver Lens Holder

Louver Lens Holders secure onto front of the lamp holding up two lenses or combination of a hexcell louver and lens. Required for securing louvers, lenses and filters in the Sun3.

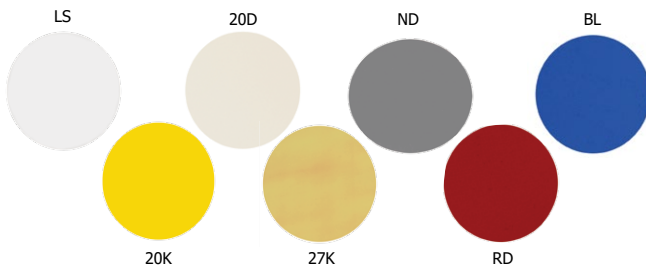
ACCESSORY		TYPE
SUN3	-	LLH
SUN3 Sun3		LLH Louver Lens Holder



Hexcell Louver

The Hexcell Louver eliminates glare from the light beam.

ACCESSORY		TYPE
LO16	-	H
LO16 MR16		H Hexcell



Film Lenses and Filters

Add film lenses and filters to shape beam, change color or adjust color temperatures. Louver lens holder #SUN3-LLH required.

LENS FILM		LENS OR COLOR
LF2	-	20D
LF2 Lens Film 2" diameter		<p>20D Refracts beam 20° down</p> <p>20K Dichroic 2000K Very Warm White</p> <p>27K Dichroic 2000K + Color Correction Film = 2700K</p> <p>ND Neutral Density Filter dims light 50%</p> <p>RD Red Dichroic Film</p> <p>BL Blue Dichroic Film</p> <p>LS Linear Spread</p>

PROJECT: _____ FIXTURE TYPE: _____ DATE: _____

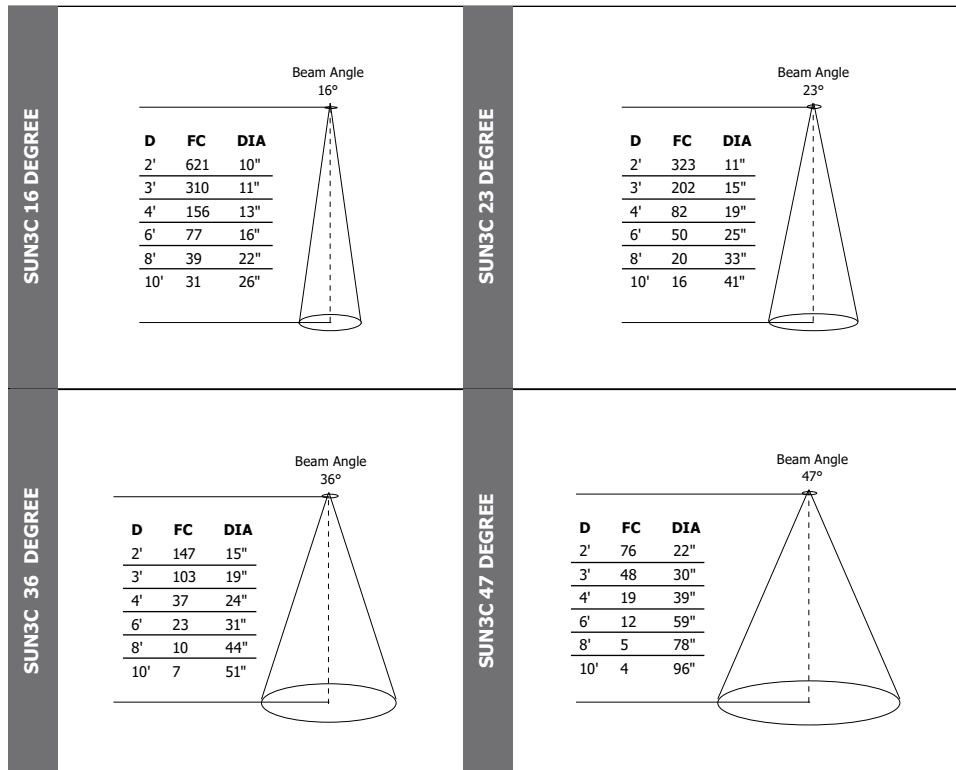


SUN3C CEILING LED DOWNLIGHT - INDOOR/OUTDOOR

REV.02.06.17



LENS/ BEAM SPREAD	INPUT VOLTS	WATTS	EQUIVALENT TO 25 WATT MR16	CBCP	RATED LIFE	COLOR TEMP (K)	CRI
L1 = 16 Degree	12VAC	7	25W	2,029	50,000	2,858	85
L2 = 23 Degree	12VAC	7	25W	1,216	50,000	2,858	85
L3 = 36 Degree	12VAC	7	25W	570	50,000	2,858	85
L4 = 47 Degree	12VAC	7	25W	385	50,000	2,858	85



PROJECT:

FIXTURE
TYPE:

DATE:

