

JUNO

Project: _____

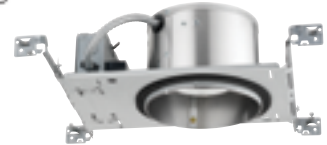
Fixture Type: _____

Location: _____

Contact/Phone: _____

6" IC 900 LUMEN LED DOWNLIGHT NEW CONSTRUCTION

IC922LEDG4 RECESSED HOUSING

**OPEN TRIMS****PRODUCT DESCRIPTION**

Dedicated LED, Air-Loc® sealed new construction housing with integral light engine • Shallow housing allows for fit in 2 x 6 construction • Can be completely covered with insulation • Fully sealed housing stops infiltration and exfiltration of air, reducing heating and air cooling costs without the use of additional gaskets • LED housing is designed to provide 50,000 hours of life and is compatible with many standard Juno trims • 5 year limited warranty on LED components.

ENVIRONMENTALLY FRIENDLY, ENERGY EFFICIENT

- No harmful ultraviolet or infrared wavelengths
- No lead or mercury
- Comparable light output to 75W PAR30 incandescent

PRODUCT SPECIFICATIONS

LED Light Engine LED array integrated to thermally conductive housing provides uninterrupted heat transfer to ensure long life of the LED • Replaceable light engine mounts directly to housing and incorporates the latest generation, high lumen output LED array • LEDs are binned within a 3-step MacAdam Ellipse exceeding ENERGY STAR® requirements for superior fixture to fixture color uniformity • 2700K, 3000K, 3500K, or 4100K color temperatures available • 90 CRI minimum.

Optical System Computer-optimized reflector design with high reflectance white finish coupled with a high transmission diffusing lens conceals the LEDs and produces uniform aperture luminance • Deep regression of lens produces a low glare, efficient system that produces 900 lumens typical with select trims • Wide flood distribution shipped as standard with optional optic accessories available and sold separately.

Aesthetic Trim Selections Compatible with wide selection of existing Juno trims • Shadow free, knife edge design blends seamlessly into ceiling.

LED Driver Choice of dedicated 120 volt driver or universal voltage driver that accommodates input voltages from 120-277 volts AC at 50/60Hz • Power factor > 0.9 at 120V input • 120 volt only driver is dimmable with the use of most incandescent, magnetic low voltage and electronic low voltage wall box dimmers • Universal voltage driver is dimmable with the use of most 0-10V wall box dimmers • For a list of compatible dimmers, see [JUNOICLED-DIM](#) • Mounted between the j-box and housing for easy access and cool operation.

Life Rated for 50,000 hours at 70% lumen maintenance.

Labels ENERGY STAR® Qualified when used with select baffle and cone trims • Certified to the high efficacy requirements of California T24 with select trims • UL listed for U.S. and Canada through-branch wiring, damp locations • Union made • UL and cUL.

Testing All reports are based on published industry procedures; field performance may differ from laboratory performance.

Product specifications subject to change without notice.

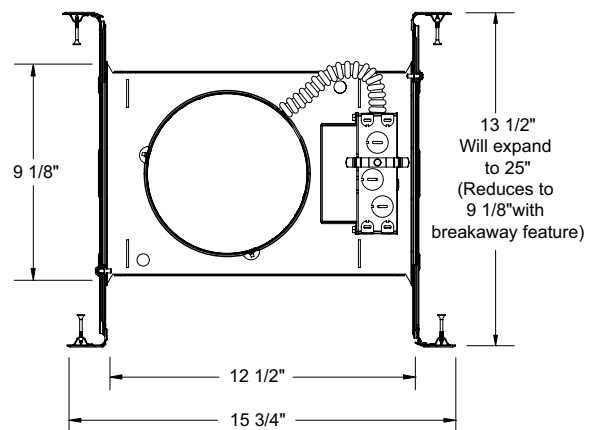
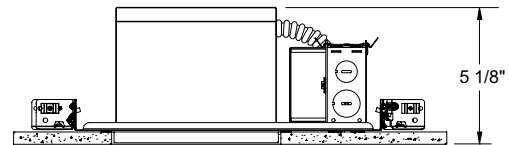
HOUSING FEATURES

Housing Designed for use in IC (insulated ceiling) or non-IC construction • Aluminum housing sealed for Air-Loc® compliance • Housing is vertically adjustable to accommodate up to a 2" ceiling thickness.

Junction Box Pre-wired junction box provided with (5) ½" and (1) ¾" knockouts, (4) knockouts for 12/2 or 14/2 NM cable and ground wire • UL listed and cUL listed for through-branch wiring, maximum 8 #12 branch circuit conductors • Junction box provided with removable access plates • Knockouts equipped with pryout slots • Quick connect electrical connectors supplied as standard for fast, secure installation.

Mounting Frame 22-gauge die-formed galvanized steel mounting frame • Rough-in section (junction box, mounting frame, housing and bar hangers) fully assembled for ease of installation.

Real Nail 3 Bar Hangers Telescoping Real Nail® 3 system permits quick placement of housing anywhere within 24" O.C. joists or suspended ceilings • Includes removable nail for repositioning of fixture in wood joist construction • Integral T-bar notch and clip for suspended ceilings • Design covered under US Patent D552,969.

DIMENSIONS

6 7/8" CEILING CUTOUT

ELECTRICAL DATA**Dedicated 120V Only Driver Option**

120V	
Input Power	15.7W (+/-5%)
Input Current	0.13A
Frequency	50/60Hz
EMI/RFI	FCC Title 47 CFR, Part 15 Class B (residential)
Minimum starting temp	-25°C





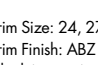




ELECTRICAL DATA**Universal Voltage**

	120V	277V
Input Power	16.7W (+/-5%)	16.5W (+/-5%)
Input Current	0.14A	0.06A
Frequency	50/60Hz	50/60Hz
EMI/RFI	FCC Title 47 CFR, Part 15 Class A (commercial)	FCC Title 47 CFR, Part 15 Class A (commercial)
Minimum starting temp	-40°C	-40°C

6" IC 900 LUMEN LED DOWNLIGHT NEW CONSTRUCTION

IC922LEDG4 RECESSED HOUSING OPEN TRIMS

ORDERING INFORMATION: Housing, trim and accessories each ordered separately.

Example: IC922LEDG4-3K-1			Example: 24W-WH			
Housing	Color Temperature	Input Voltage	Trim/Description			
IC922LEDG4	27K 2700K 3K 3000K 35K 3500K 41K 4100K	I Dedicated 120V Only (Forward Phase + ELV dimmable) U Universal Voltage, 120-277V (0-10V dimmable)	 24W-WH ²  24B-WH ^{1,3}  24B-SC ^{1,3}  24B-ABZ ^{1,3}  24B-BL ^{1,3}	Conical White Baffle Conical Black Baffle Conical Black Baffle Conical Black Baffle Conical Black Baffle Conical Cone in Clear Alzak® Conical Cone in Gold Alzak® Conical Cone in Black Alzak® Conical Cone in Pewter Alzak® Conical Cone in Gloss White Conical Cone in Haze Conical Cone in Wheat Haze Conical Cone in Wheat Haze	 9024W-WH  9324-SC  9524-SC  9702	White Octagonal w/ White Baffle Luminous Disc (Frosted) Chrome Band Luminous Collar (Frosted)

Trim Size: 24, 27, 9324, 9524 - 7⁵/₈" O.D.; 9702 - 7³/₄" O.D.; 9024 - 8" O.D.
 Trim Finish: ABZ - Classic Aged Bronze, BL - Black, SC - Satin Chrome, WH - White.
 Alzak is a registered trademark of Alcoa Corp.
 Note: In Canada when insulation is present, Type IC fixtures must be used.

¹ Not ENERGY STAR® Qualified
² Universal Voltage: T24 @ 35K, 41K only
³ 120V: T24 @ 3K, 35K, 41K only
⁴ Universal Voltage: T24 @ 3K, 35K, 41K only
⁵ 120V only: T24 certified

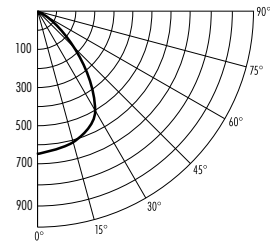
ACCESSORIES

Catalog No.	Description
LEDOPTICG3-M	Medium Flood Optic (50°)
LEDOPTICG3-N	Narrow Flood Optic (37°)
LEDOPTICG3-S	Spot Optic (10°)

To order, specify catalog number.

PHOTOMETRIC REPORT

Test Report #: PTO2141401R
 Catalog No: IC922LEDG4-35K
 with 24W-WH Trim
 and standard wide flood optic
Luminaire Spacing Criterion: 1.16
Luminaire LPW: 66



CANDLEPOWER DISTRIBUTION (Candelas)

Degrees	Vertical	0°
0	655	
5	649	
15	610	
25	545	
35	427	
45	194	
55	85	
65	42	
75	24	
85	6	
90	0	

Multiplier: 27K - 0.90
 3K - 0.97
 41K - 1.04

AVERAGE INITIAL FOOTCANDLES

Multiple Units (Square Array, 60'x60' room)
 Ceiling 80% Wall 50% Floor 20%

Spacing	RCR1	RCR3	RCR5
4.0'	71	59	49
5.0'	45	37	31
6.0'	32	26	22
7.0'	26	21	18
8.0'	20	17	14
9.0'	15	13	11
10.0'	11	9	8

ZONAL LUMEN SUMMARY

Zone	Lumens	%Lamp	%Fixture
0-30°	484	N/A	46.0
0-40°	745	N/A	70.8
0-60°	978	N/A	92.9
0-90°	1052	N/A	100.0

INITIAL FOOTCANDLES (One Unit, 16W, 78.8° Beam)

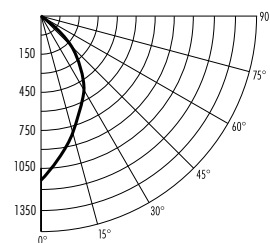
Distance to Illuminated Plane (Feet)	Footcandles Beam Center	Beam Diameter
4	40.9	6.6'
6	18.2	9.9'
8	10.2	13.1'
10	6.6	16.4'

LUMINANCE (Average cd/m²)

Degrees	Average Luminance
45	14990
55	8113
65	5412
75	5150
85	3529

PHOTOMETRIC REPORT

Test Report #: 25975R
 Catalog No: IC922LEDG4-35K
 with 27C-WH Trim
 and standard wide flood optic
Luminaire Spacing Criterion: 0.78
Luminaire LPW: 73



CANDLEPOWER DISTRIBUTION (Candelas)

Degrees	Vertical	0°
0	1152	
5	1081	
15	821	
25	644	
35	460	
45	220	
55	70	
65	14	
75	0	
85	0	
90	0	

Multiplier: 27K - 0.90
 3K - 0.97
 41K - 1.04

AVERAGE INITIAL FOOTCANDLES

Multiple Units (Square Array, 60'x60' room)
 Ceiling 80% Wall 50% Floor 20%

Spacing	RCR1	RCR3	RCR5
4.0'	80	67	57
5.0'	51	43	37
6.0'	35	30	25
7.0'	29	24	21
8.0'	23	19	16
9.0'	17	15	12
10.0'	13	11	9

ZONAL LUMEN SUMMARY

Zone	Lumens	%Lamp	%Fixture
0-30°	625	N/A	53.9
0-40°	909	N/A	78.3
0-60°	1145	N/A	98.7
0-90°	1160	N/A	100.0

INITIAL FOOTCANDLES (One Unit, 16W, 58.1° Beam)

Distance to Illuminated Plane (Feet)	Footcandles Beam Center	Beam Diameter
4	72.0	4.4'
6	32.0	6.7'
8	18.0	8.9'
10	11.5	11.1'

LUMINANCE (Average cd/m²)

Degrees	Average Luminance
45	18537
55	7239
65	2007
75	0
85	0

Fixtures tested to IES recommended standard for solid state lighting per LM-79-08. Photometric performance on a single unit represents a baseline of performance for the fixture. Results may vary in the field.

