



TRAC-MASTER®

Low Voltage

Project: _____

Fixture Type: _____

Location: _____

Contact/Phone: _____

12V ELECTRONIC TRANSFORMERS WITH QUICK JACK ADAPTERS

T537QJ and T538QJ

PRODUCT SPECIFICATIONS

Transformer Operating Environment Designed for 40,000 hour operating life with repeated switching in 40° C ambient and 90% relative humidity environment • Designed to withstand the intense heat produced by incandescent trac lighting • Tolerates sustained case temperatures of 100° C • All components meet rigid heat tolerance standards and pass over-temperature life tests.

Transformer Agency Ratings UL recognized and CSA certified • FCC Certified to Class A noise limiting standards • Controls radio interference & provides quiet operation with or without dimming • Exceeds IEEE Line Transient Requirements • Provides superior spike protection.

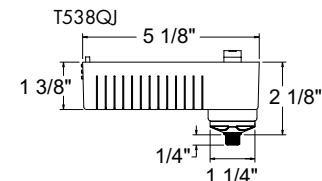
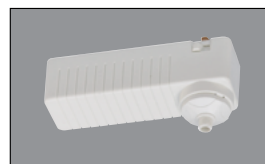
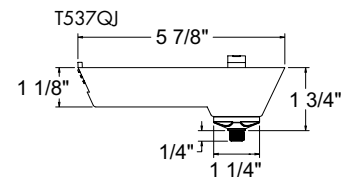
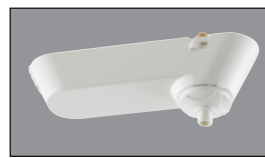
Transformer Compatibility and Construction Designed to accept Juno low voltage lampholders and 12V AC halogen lampholders or pendants • Recommended for use with incandescent (halogen) lamps only • When using LED lamps, universal versions should be specified – see [D1.2.4](#) • Transformer adapter may be used with Trac-Master or Trac-Lites Series trac (or designated monopoints) and all Juno halogen Quick Jack fixtures and pendants • Transformer output is short circuit protected.

Housing High impact polycarbonate housing • Integral on/off switch • Available in white, black or silver finish.

Trac Adapter Copper alloy contacts provide precise spring action - no arcing and will not take a set • True, positive electrical ground • Patented embossed polarity arrows on bottom of adapter • “Pull-up” contact to up position for two-circuit application.

Product specifications subject to change without notice.

DIMENSIONS



Engineering Data

Input	120VAC, .64A
Nominal Output	11.0 - 11.8V, 75 Watts (VA) Max. load
Operating Frequency	>20kHz
Power Factor	$\left(\frac{\text{Output Power}}{\text{Input Power}} \right)$ >95%
Circuit Efficacy:	90% ± 2%
Regulation-Input Voltage: Output Voltage	1:1
High Potential Withstand @ 1240 VAC	1 sec.
Input Current Distortion	
Total Harmonic Content	15%
Operating Ambient Humidity	0-90% RH
Weight Potted	8 oz. (approx.)
Rated Average Life (with 75W lamp)	40,000 hours @ 120VAC input 40°C ambient

Third Party Qualifications:

FCC Certified under CFR, Title 47, Part 18, Classes A & B.

ETL Certified for US & Canada.

IEEE Line Transient Withstand as defined in Publication 587-1980, Category A.

PRODUCT CODE

Catalog Number	Finish	Description
T537QJWH	White	12V, 75W Output - 120V Input Low Profile Electronic Transformer with Quick Jack Adapter
T537QJBL	Black	12V, 75W Output - 120V Input Low Profile Electronic Transformer with Quick Jack Adapter
T537QJSL	Silver	12V, 75W Output - 120V Input Low Profile Electronic Transformer with Quick Jack Adapter
T538QJWH	White	12V, 75W Output - 120V Input Electronic Transformer with Quick Jack Adapter
T538QJBL	Black	12V, 75W Output - 120V Input Electronic Transformer with Quick Jack Adapter
T538QJSL	Silver	12V, 75W Output - 120V Input Electronic Transformer with Quick Jack Adapter

THIS SIDE INTENTIONALLY LEFT BLANK



1300 S. Wolf Road • Des Plaines, IL 60018 • Phone (847) 827-9880 • Fax (847) 827-2925
Visit us at www.junolightinggroup.com

Printed in U.S.A. ©2016 Acuity Brands Lighting, Inc.