



TRAC-MASTER®

Low Voltage

SLANT SERIES

T805, T807 and T809

Project: _____

Fixture Type: _____

Location: _____

Contact/Phone: _____

PRODUCT DESCRIPTION

The angular design cleverly disguises the integral electronic transformer. The slant transformer allows 90° vertical aiming capability in both directions and 358° horizontal rotation. MR16 lamps provide tight beam control for dramatic lighting applications.

Socket Ceramic bi-pin.

Aiming 90° vertical aiming capability in both directions and 358° horizontal rotation.

Transformer 50VA 12V solid state electronic transformer, integral to fixture • Slant design • Dimmable.

Adapter Copper alloy contacts provide precise spring action - no arcing and will not take a set • True, positive electrical ground • On/off switch included • Patented embossed polarity arrows on bottom of adapter • Spring-loaded positive latch with embossed polarity arrows secures trac light to trac • "Pull-up" contact to up position for two-circuit application.

Labels UL listed, CSA certified.

Product specifications subject to change without notice.



Low Voltage MR16

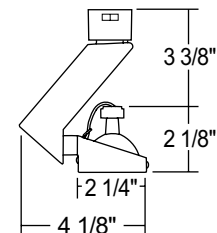
Construction Polycarbonate transformer housing with die-formed metal lamp housing.

Catalog Number	Description	Finish	Lamp
T805WH	Gimbal Ring	White	20-50W MR16
T805BL	Gimbal Ring	Black	20-50W MR16

ACCESSORIES

Cat. No.	Description	Cat. No.	Description	Cat. No.	Description
T551-5	Color Filters	T557	Prismatic Spread Lens	T559	Linear Spread Lens
T5501-18	Dichroic Filters	T5520	Diffusion Lens	T5521	Uniformity Lens
T5522	UV Filter	T5559BL	Hexcell Louver		

See specification sheet [D1.2.2](#) for details.



TRAC-MASTER®

Low Voltage

SLANT SERIES**T805, T807 and T809****PRODUCT DESCRIPTION**

The angular design cleverly disguises the integral electronic transformer. The slant transformer allows 90° vertical aiming capability in both directions and 358° horizontal rotation. MR16 lamps provide tight beam control for dramatic lighting applications.

Socket Ceramic bi-pin.

Aiming 90° vertical aiming capability in both directions and 358° horizontal rotation.

Transformer 50VA 12V solid state electronic transformer, integral to fixture • Slant design • Dimmable.

Adapter Copper alloy contacts provide precise spring action-no arcing and will not take a set • True, positive electrical ground • On/off switch included • Patented embossed polarity arrows on bottom of adapter • Spring-loaded positive latch with embossed polarity arrows secures trac light to trac • "Pull-up" contact to up position for two-circuit application.

Labels UL listed, CSA certified.

Product specifications subject to change without notice.

Low Voltage MR16

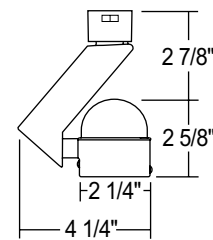
Construction Polycarbonate transformer housing with die-formed metal lamp housing and metal mesh back.

Catalog Number	Description	Finish	Lamp
T807WH	Round Back Mesh	White	20-50W MR16
T807BL	Round Back Mesh	Black	20-50W MR16

ACCESSORIES

Cat. No.	Description	Cat. No.	Description	Cat. No.	Description
T551-5	Color Filters	T557	Prismatic Spread Lens	T559	Linear Spread Lens
T5501-18	Dichroic Filters	T5520	Diffusion Lens	T5521	Uniformity Lens
T5522	UV Filter	T5559BL	Hexcell Louver		

See specification sheet [D1.2.2](#) for details.

**Low Voltage MR16**

Construction Polycarbonate transformer housing with vented die-cast aluminum lamp housing.

Catalog Number	Description	Finish	Lamp
T809WH	Step Cylinder	White	20-50W MR16
T809BL	Step Cylinder	Black	20-50W MR16

ACCESSORIES

Cat. No.	Description	Cat. No.	Description	Cat. No.	Description
T558BL	Black Snoot	T556BL	Black Eyebrow	T557	Prismatic Spread Lens
T559	Linear Spread Lens	T551-5	Color Filters	T5501-18	Dichroic Filters
T5520	Diffusion Lens	T5521	Uniformity Lens	T5522	UV Filter
T5559BL	Hexcell Louver				

See Specification sheet [D1.2.2](#) for details.

