

# T~TRAK

TWO-CIRCUIT T~TRAK

## GENERAL PRODUCT INFORMATION:



This product is suitable for indoor dry locations only.

Read the "Important Safety Instructions" section thoroughly before following the steps below.

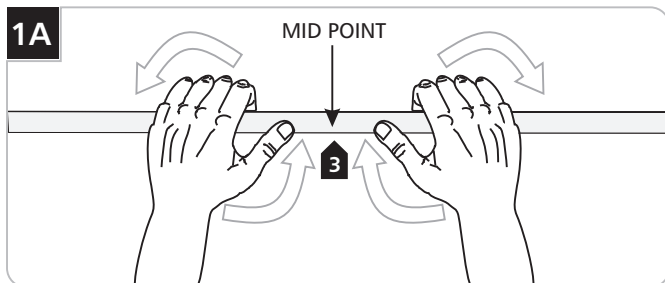
## Bending the Two-Circuit T~trak™

**NOTE:** Do not bend the Two-Circuit T~trak tighter than 3 feet radius.

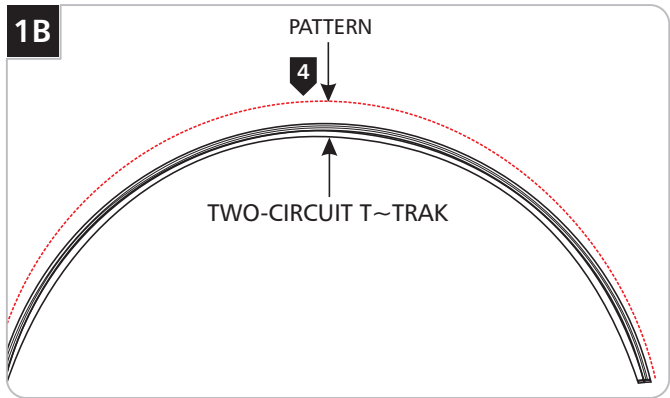
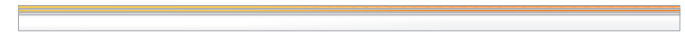
**NOTE:** Bend the Two-Circuit T~trak a little at a time with hands close together .

**NOTE:** Make sure a pattern of the curve is available while bending the Two-Circuit T~trak so that the Two-Circuit T~trak is constantly checked against it, a curved table top could be used as a pattern.

**NOTE:** Always keep in mind that the white side of the Two-Circuit T~trak is up. White side of the Two-Circuit T~trak is where the neutral bus bars of the circuits are located and the gray side is where the hot bus bars of the circuits are located.



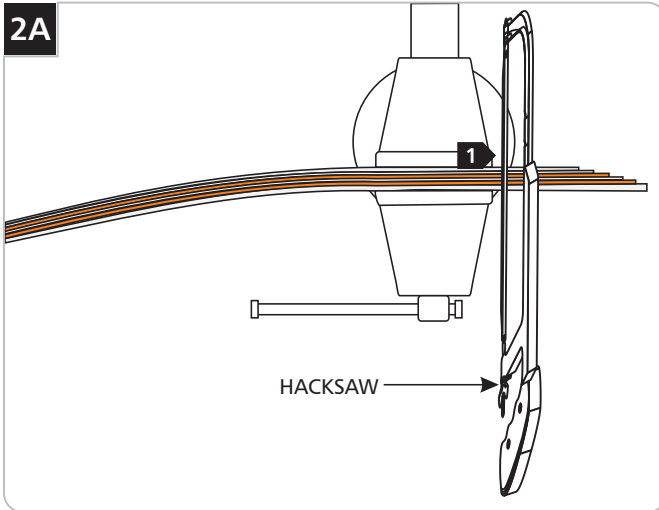
- 1 Skip these procedures if not bending the Two-Circuit T~trak.
- 2 The bending point should be centered between the hands.
- 3 To ensure a smooth curve begin with hands close together (thumbs being 6" apart). Move hands together as bending progresses around the Two-Circuit T~trak.



- 4 Constantly check the curved Two-Circuit T~trak against the pattern.
- 5 After achieving the desired shape, trim the Two-Circuit T~trak ends by referring to "Trim the Two-Circuit T~trak" section.

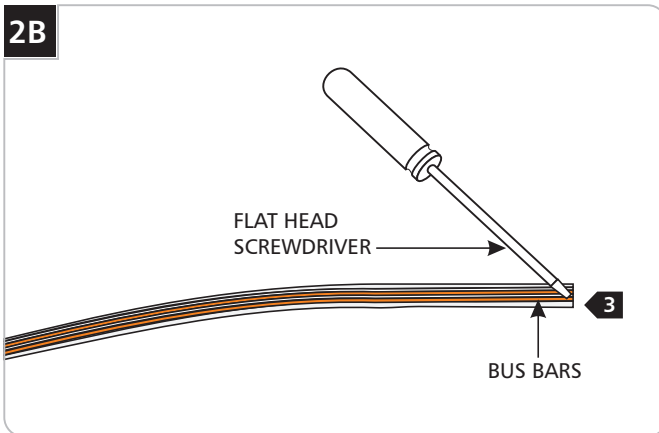
**NOTE:** A curved Two-Circuit T~trak can be straighten or reshaped.

## Trim the Two-Circuit T~trak



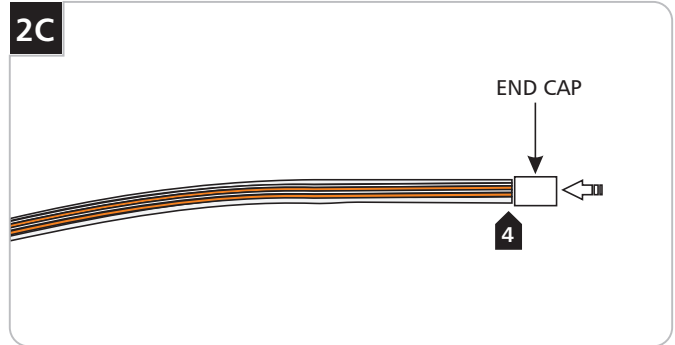
**NOTE:** When the Two-Circuit T~trak is formed into a shape, the ends become staggered. The staggered ends have to be cut even with a hacksaw.

- 1 Use a hack saw to cut the Two-Circuit T~trak evenly.
- 2 Use a file to clean the burrs around the cut section.



- 3 Run a flat head screwdriver through the bus bars (on both white and gray sides) to clean any debris.

**NOTE:** If the end of the Two-Circuit T~trak is going to be connected to another Two-Circuit T~trak or a power feed then follow the instructions provided with those finished goods. Otherwise, the provided end caps must be installed. Never leave the ends of the Two-Circuit T~trak bare and uncovered.



- 4 Gently tap the end cap completely (1/2") onto the Two-Circuit T~trak.

## Important Safety Instructions

- Read all Instructions thoroughly.
- Have a qualified electrician install the Two-Circuit T~trak.
- Do not install any part of the Two-Circuit T~trak system less than 5 feet above the floor.
- Do not install any fixture assembly closer than 6 inches from any curtain, or similar combustible material.
- Disconnect the electrical power to the Two-Circuit T~trak before modifying, changing, or adding fixtures and sections of the Two-Circuit T~trak.
- Do not attempt to energize anything other than fixtures identified to be used with Tech Lighting Two-Circuit T~trak system.
- To reduce the risk of fire and electrical shock, do not attempt to connect power tools, extension cords, appliances, and like to the Two-Circuit T~trak.
- Do not load each circuit of the Two-Circuit T~trak to more than 20 Amps.
- Do not install the Two-Circuit T~trak system in damp or wet locations.

**SAVE THESE INSTRUCTIONS!**

**T~TRAK**

a brand of **TECH LIGHTING**

7400 Linder Ave, Skokie, IL 60077

847.410.4400

[www.ttraklighting.com](http://www.ttraklighting.com)

© 2010 Tech Lighting, L.L.C. All rights reserved. The "T~trak"™ graphic is a registered trademark of T~trak™. T~trak™ reserves the right to change specifications for product improvements without notification.

A Generation Brands Company