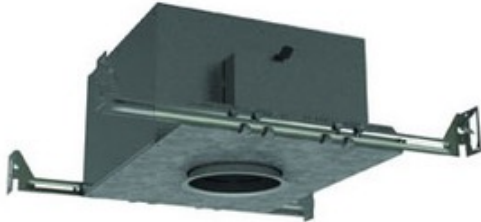


ISMR4000M 3 Inch 20W MLV IC New Construction Housing



**Description:**

ISMR4000M 3 Inch Low Voltage IC Airtight New Construction Housing is suitable for insulated ceiling applications and damp locations. Below ceiling accessible. Takes up to 7/8 inch ceiling thickness. Low voltage 12 volt magnetic transformer included. One 20 watt, 12 volt GU5.3 MR16 bulb is required, but not included. Dimmable with a low voltage magnetic dimmer. Consult bulb manufacturer for low voltage magnetic dimmer compatibility when using LED bulb option. Suitable for damp locations. UL listed. 3.25 inch cut out. 15.5 inch length x 10 inch width x 7.1 inch height. A complete fixture includes a housing and trim, sold separately.



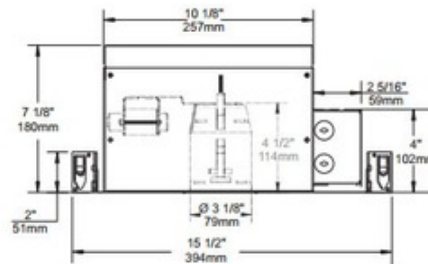
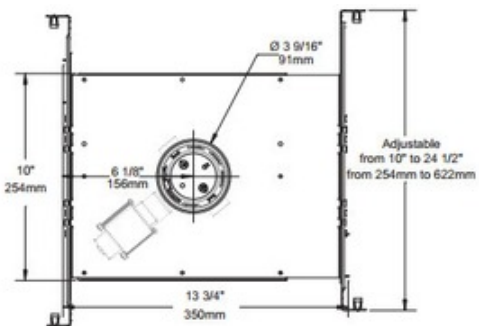
Shown in: Galvanized Steel

List Price: \$146.00  
 Our Price: \$87.60

Shade Color: N/A  
 Body Finish: Galvanized Steel  
 Lamp: 1 x MR16/GU5.3 (bipin)/20W/12V Halogen  
 1 x MR16/GU5.3 (bipin)/12V LED  
 Wattage: 20W  
 Dimmer: Low Voltage Magnetic  
 Dimensions: 15.5"L x 7.1"H x 10"W

**Technical Information**

Ceiling Type: Drywall with Trim  
 Housing Type: New construction IC Airtight  
 Housing Height: 7"  
 Aperture Size: 3.000"



Product Number: <b>CLT106627</b>			
Company:		Fixture Type:	Date: Mar 20, 2018
Project:		Approved By:	

#0314IC-ISMR400-010H1-XXGS

Fax: (773) 883-6131

Phone: 866-954-4489

Address: 1718 W. Fullerton Ave. Chicago IL 60614

www.Lightology.com