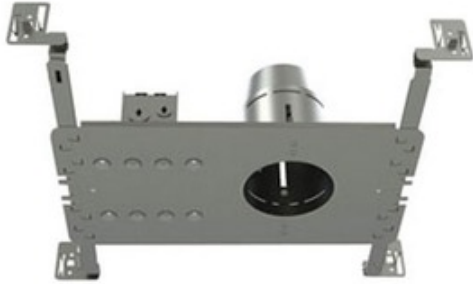


NW2000CE 4 inch 42W ELV Non-IC Shallow New Construction



**Description:**

NW2000CE 4 Inch Non-IC Shallow New Construction Housing is a thermally protected housing suitable for non-insulated new construction installations. Non-IC designation requires that insulation be kept a minimum of 3 inches away from housing. Below ceiling accessible. Takes up to 7/8 inch ceiling thickness. Low voltage 12 volt electronic transformer included. One 42 watt maximum, 12 volt GU5.3 MR16 bulb is required, but not included. Dimmable with a low voltage electronic dimmer. See attached dimmer compatibility reference when using LED bulb option. Suitable for damp locations. UL listed. 4.25 inch ceiling cut out. 12 inch length x 7.5 inch width x 3.5 inch height. A complete fixture includes a housing and trim, sold separately.

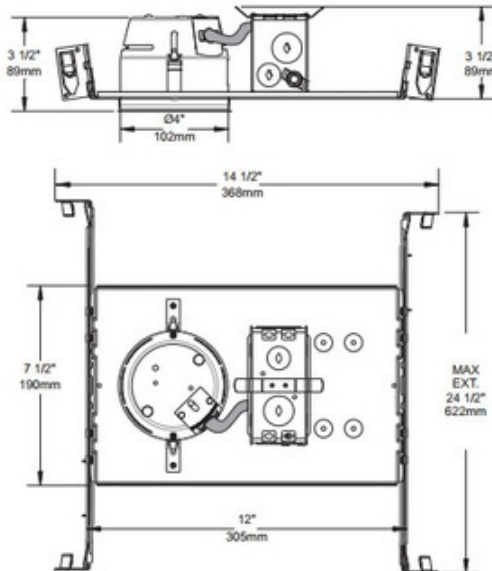
Shown in: Galvanized Steel

List Price: \$120.25  
 Our Price: \$73.59

Shade Color: N/A  
 Body Finish: Galvanized Steel  
 Lamp: 1 x MR16/GU5.3 (bipin)/42W/12V Halogen  
 1 x MR16/GU5.3 (bipin)/12V LED  
 Wattage: 42W  
 Dimmer: Low Voltage Electronic  
 Dimensions: 12"L x 3.5"H x 7.5"W

**Technical Information**

Ceiling Type: Drywall with Trim  
 Housing Type: New Construction NON IC  
 Housing Height: 4"  
 Aperture Size: 4.000"



Product Number: <b>CLT106641</b>			
Company:		Fixture Type:	Date: Apr 20, 2018
Project:		Approved By:	

#0314NH-NW2000C-012H1-XXGS

Fax: (773) 883-6131

Phone: 866-954-4489

Address: 1718 W. Fullerton Ave. Chicago IL 60614

www.Lightology.com