

NW3000LE 3.5 Inch 42-50W ELV Non-IC New Construction

Housing



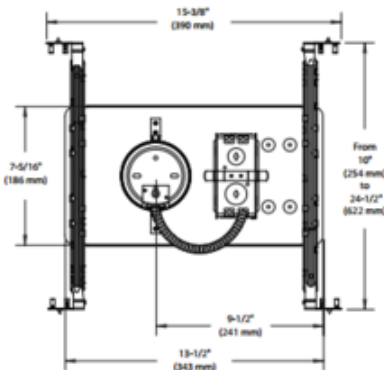
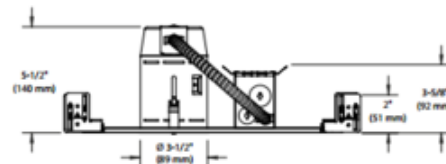
Description:

NW3000LE 3.5 Inch 42-50 Watt GU5.3 MR16 Halogen Non-IC Long New Construction Housing with electronic transformer is made of 18 gauge galvanized steel. Non-IC designation requires that insulation be kept a minimum of 3 inches away from housing. Below ceiling accessible. Can fit in ceilings up to 7/8 inch thick. Includes 12 volt electronic transformer. One 42-50 watt, 12 volt GU5.3 MR16 bulb is required, but not included. Wattage determined by trim/housing combination. Dimmable with a low voltage electronic dimmer. See attached manufacturer dimmer compatibility reference when using LED bulb option. Suitable for damp locations. UL listed. Ceiling cutout 3 5/8 inch. 15.38 inch length x 7.3 inch width x 5.5 inch height. A complete fixture includes a housing and trim, sold separately.

Shown in: Galvanized Steel

List Price: \$125.25
 Our Price: \$90.18

Shade Color: N/A
 Body Finish: Galvanized Steel
 Lamp: 1 x MR16/GU5.3 (bipin)/50W/12V Halogen
 1 x MR16/GU5.3 (bipin)/12V LED
 Wattage: 50W
 Dimmer: Low Voltage Electronic
 Dimensions: 15.38"L x 5.5"H x 7.3"W



Technical Information

Ceiling Type: Drywall with Trim
 Housing Type: New Construction NON IC
 Housing Height: 6"
 Aperture Size: 3.500"

Product Number: CLT106645			
Company:		Fixture Type:	Date: Mar 19, 2018
Project:		Approved By:	

#0314NH-NW3000L-011H1-XXXX

Fax: (773) 883-6131

Phone: 866-954-4489

Address: 1718 W. Fullerton Ave. Chicago IL 60614

www.Lightology.com