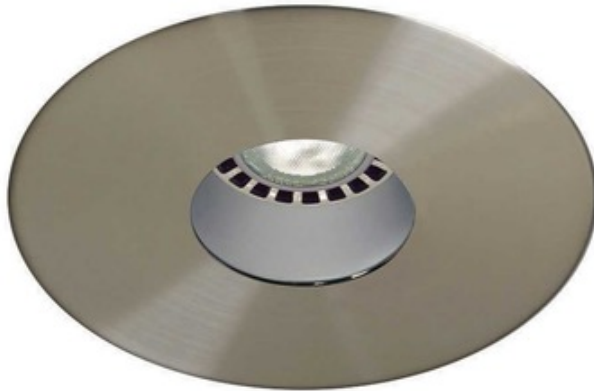


R3652 3.5 Inch Regressed Pinhole Trim



Description:

R3652 3.5 Inch Round Regressed Pinhole Trim is made of plated die-formed steel or powder coat painted finish with anodized aluminum reflector. Trim finish available in White, Black, Gold Plated 24K, Chrome, Brushed Chrome, Architectural Bronze, Antique Copper, Matte White, Brushed Nickel, Satin Nickel, Metallic Grey or Antique Nickel. Additional reflector finishes include specular Clear or Black, or painted Black, White or Matte White. See attached manufacturer specification for housing/trim combination options. Lamp options include 12 volt GU5.3 MR16 up to 50 watts, 120 volt PAR16 LED up to 8 watts, 12 volt GU5.3 MR16 LED up to 11.5 watts, 120 volt GU10 MR16 halogen up to 50 watts, and 120 volt GU10 MR16 LED up to 9.8 watts. Use supplied glass lens only with MR16 lamps with no glass cover. UL listed. Suitable for damp locations. 1 year warranty. 3 5/8 inch ceiling cutout. 4.4 inch diameter x 2 inch height. 1.7 inch diameter aperture. A complete fixture includes a housing and trim, sold separately.

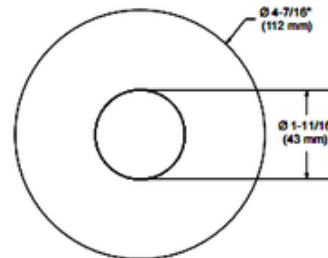
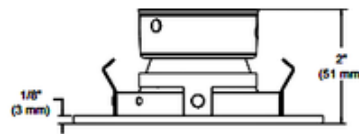
Shown in: Satin Nickel / Anodized Reflector

List Price: \$52.25
 Our Price: \$31.98

Shade Color: N/A
 Body Finish: Satin Nickel / Anodized Reflector
 Lamp:
 1 x MR16/GU5.3 (bipin)/50W/12V Halogen
 1 x MR16/GU5.3 (bipin)/12V LED
 1 x MR16/GU10/120V Halogen
 1 x MR16/GU10/120V LED
 1 x PAR16/Medium (E26)/120V LED

Wattage: 50W
 Dimmer: Dimmable
 Dimensions: 2"H x 4.4"W

Technical Information
 Function: Downlight
 Ceiling Type: Drywall with Trim
 Aperture Shape: Pinhole
 Aperture Size: 1.700"



Product Number: CLT106676			
Company:		Fixture Type:	Date: Apr 25, 2018
Project:		Approved By:	