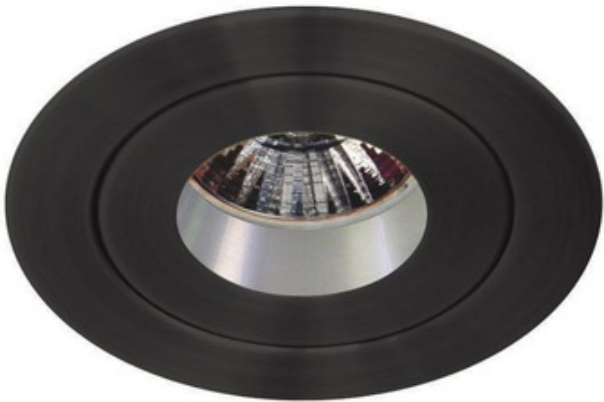




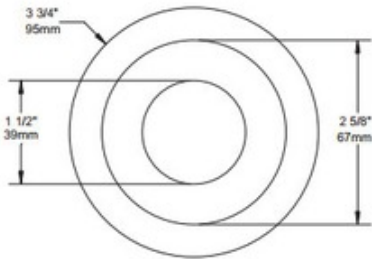
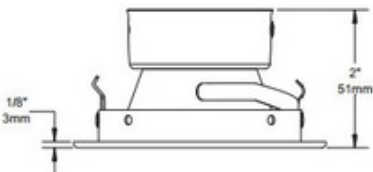
BRAND Contrast Lighting

DESCRIPTION

T4650 3 Inch Low Profile Regressed Pinhole Trim is available in a powder coat painted or plated die-formed steel finish in White, Black, Gold Plated 24K, Chrome, Brushed Chrome, Architectural Bronze, Antique Copper, Matte White, Brushed Nickel, Satin Nickel, Metallic Grey or Antique Nickel. Anodized aluminum reflector standard. Other reflector finishes include specular Black or Clear, or painted White, Black or Matte White. One 20 watt, 12 volt GU5.3 MR16 halogen bulb or LED equivalent is required, but not included. See housing for dimmer information. Suitable for damp locations. UL listed. 3.75 inch outside diameter x 1.5 inch inside diameter x 2 inch height.



TRIM COLOR	N/A
BODY FINISH	Architectural Bronze/ Anodized Reflector
WATTAGE	20W
DIMMER	Dimmable
DIMENSIONS	3.75"W x 2"H
BULB NOT INCLUDED	
LAMP	1 x MR16/GU5.3 (bipin)/20W/12V Halogen 1 x MR16/GU5.3 (bipin)/12V LED
Technical Information	
FUNCTION	Downlight
CEILING TYPE	Drywall with Trim
APERTURE SHAPE	Pinhole
APERTURE SIZE	1.000"
SPEC #	CLT106906



COMPANY	PROJECT	FIXTURE TYPE	APPROVED BY	DATE