



### BRAND

Juno Lighting

### DESCRIPTION

6 Inch Super Slope Generation 4 120 Volt 900 Lumen LED IC New Construction Housing features a 30 to 45 degree pitch. Dedicated LED, Air-Loc sealed slope ceiling new construction housing with integral light engine. IC rated construction allows for housing to be completely covered with insulation. Fully sealed housing stops infiltration and exfiltration of air, reducing heating and air cooling costs without the use of additional gaskets. Replaceable light engine mounts directly to slider plate and incorporates the latest generation high lumen output LED array. Comparable light output to 26 watt compact fluorescent while consuming less than 16 watts. 120 volt only driver is dimmable with the use of most incandescent, magnetic low voltage and electronic low voltage wall box dimmers (see attached manufacturer dimmer compatibility reference). Life rated for 50,000 hours at 70 percent lumen maintenance. Energy Star. Title 24 compliant with select trims. UL listed for damp locations. 18.5 inch length x 9.1 inch width x 7.6 inch height. A complete fixture includes a housing and trim, sold separately.



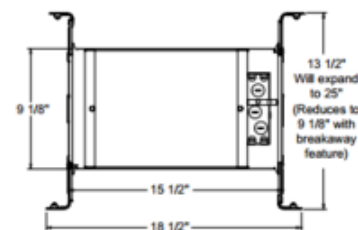
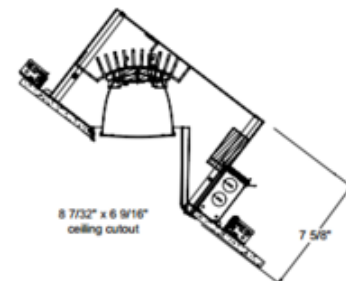
Shown in: Aluminum

TRIM COLOR	N/A
BODY FINISH	Aluminum
WATTAGE	16W
DIMMER	Dimmable
DIMENSIONS	18.4"L x 9.1"W x 7.6"H
INTEGRATED LED MODULE	
LAMP	1 x LED/120V LED

#### Technical Information

LUMINOUS FLUX	900 lumens
LUMENS/WATT	56.25
LAMP COLOR	2700K
COLOR RENDERING	90 CRI
LAMP LIFE	50000 hours
CEILING TYPE	Sloped
HOUSING TYPE	New Construction Slope IC
HOUSING HEIGHT	8"

SPEC # JUN111367



COMPANY

PROJECT

FIXTURE TYPE

APPROVED BY

DATE