

# Lytespan Alcyon MR16 Mini Cylinder Track Head



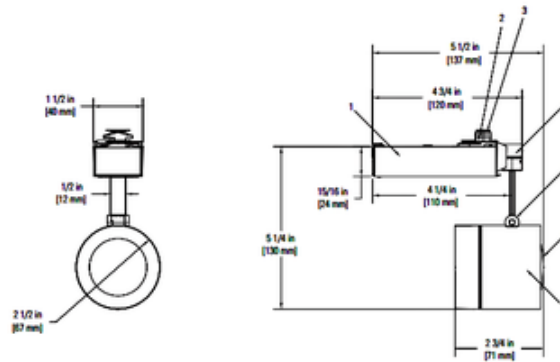
**Description:**

Lytespan Alcyon MR16 Mini Cylinder track head features a wireless stem profile with infinite horizontal rotation and 0-90 degree vertical adjustment. Includes an integral glass shield for use with unshielded lamps. Class 2 12 volt electronic transformer included. Finish available in Matte White, Matte Black or Metallic Aluminum. One 50 watt, 12 volt GU5.3 MR16 halogen lamp without lens or one 37 watt, 12 volt GU5.3 MR16 halogen lamp with lens is required, but not included. UL listed. 2.5 inch width x 2.75 inch depth x 5.25 inch length. Compatible with Lytespan Basic 1-circuit, Advent 1 or 2 circuit, and Radius 1-circuit track systems.

Shown in: Metallic Aluminum

List Price: \$287.82  
 Our Price: \$172.69

Shade Color: N/A  
 Body Finish: Metallic Aluminum  
 Lamp: 1 x MR16/GU5.3 (bipin)/50W/12V Halogen  
 1 x MR16/GU5.3 (bipin)/37W/12V Halogen  
 1 x MR16/GU5.3 (bipin)/12V LED  
 Wattage: 50W  
 Dimmer: Low Voltage Electronic  
 Dimensions: 5.25"L x 2.5"W x 2.75"D



Product Number: <b>LTL19278</b>			
Company:		Fixture Type:	Date: Apr 24, 2018
Project:		Approved By:	

#1224LY-CYLIND-003H1-OOAL

Fax: (773) 883-6131

Phone: 866-954-4489

Address: 1718 W. Fullerton Ave. Chicago IL 60614

www.Lightology.com