

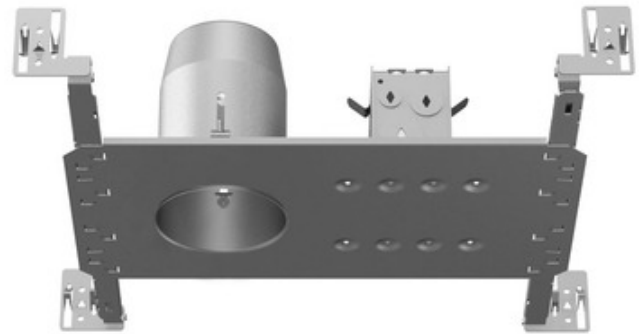


BRAND

Contrast Lighting

DESCRIPTION

Eco Series 2 LED 3.5 Inch Insulated Ceiling AirTight Housing New Constructing Housing with electronic driver is made of galvanized steel construction and features below ceiling accessibility for maintenance. Perfect fit to ceiling with no light leakage. Approved for installation in insulated ceiling with direct contact to insulating material (except polyurethane). Can fit ceiling up to 1.5 inches thick. Requires a 6 inch clearance beyond the ceiling level. Cutout diameter: 3 5/8 inch. Mounting bars extend from 10 to 24.5 inches to fit in most ceilings. Junction box can support up to 10 x 14 or 8 x 12 gauge wires. Thermal protection 90 degrees C. Title 24. ASTM E283. Includes 120 volt 9 watt LED driver with 11 watt power consumption. Dimmable per attached ECOLED2 dimmer compatibility list. Dimensions: 13.5 inch width x 7.4 inch depth x 5.5 inch height. Suitable for damp locations. Suitable for wet locations using Marine Grade/WET compatible trims. Includes 5 year warranty on LED driver. A complete fixture consists of a housing and trim, sold separately.

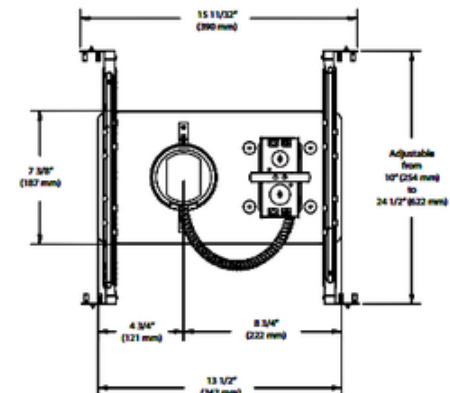
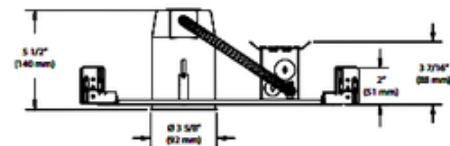


TRIM COLOR	N/A
BODY FINISH	N/A
WATTAGE	9W
DIMMER	Dimmable
DIMENSIONS	13.5"W x 5.5"H x 7.4"D
BULB NOT INCLUDED	
LAMP	1 x LED/120V LED

Technical Information

CEILING TYPE	Drywall with Trim
HOUSING TYPE	New construction IC Airtight
HOUSING HEIGHT	6"

SPEC #	CLT230939
--------	-----------



COMPANY	PROJECT	FIXTURE TYPE	APPROVED BY	DATE