

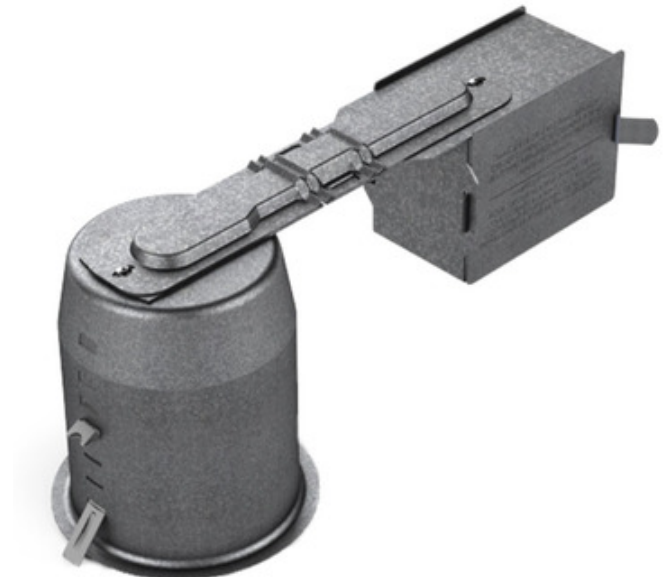


BRAND

Contrast Lighting

DESCRIPTION

Evolution Series 3.5 Inch GU5.3 MR16 LED IC AirTight Remodel Housing is made of 18 gauge galvanized steel and is approved for installation in insulated ceiling with direct contact to insulating material (except polyurethane). Below ceiling accessible. Requires a 4 inch clearance beyond the ceiling level. Designed for 12 volt, 11.5 watt GU5.3 base MR16 LED lamp, sold separately. Includes 10 watt 120V/12VAC electronic transformer. See lamp manufacturer for dimmer compatibility. Can fit in ceilings up to 1 1/8 inch thick. UL listed for damp locations. Ceiling cutout 3 5/8 inch. A complete fixture consists of a housing and trim. Trim and lamp sold separately.



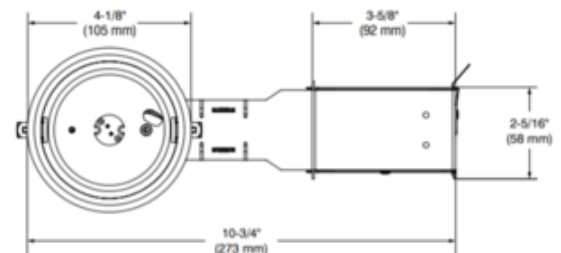
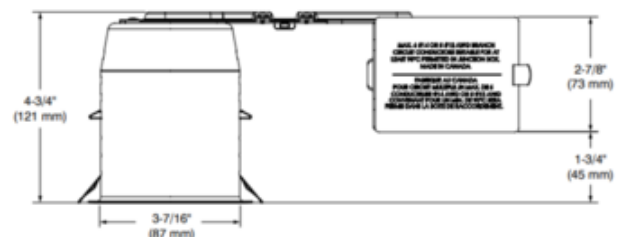
TRIM COLOR	N/A
BODY FINISH	N/A
WATTAGE	10W
DIMMER	Low Voltage Electronic
DIMENSIONS	10.75"L x 4.13"W x 4.75"H
BULB NOT INCLUDED	
LAMP	MR16/GU5.3 (bipin)/10W/12V LED

Technical Information

CEILING TYPE	Drywall with Trim
HOUSING TYPE	Remodel IC
HOUSING HEIGHT	4"
PRODUCT DIMENSIONS	Cutout: 3 5/8"

SPEC

CLT369059



COMPANY

PROJECT

FIXTURE TYPE

APPROVED BY

DATE