

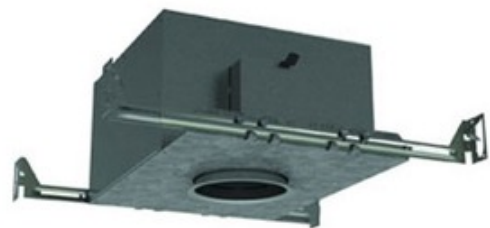


BRAND

Contrast Lighting

DESCRIPTION

ISMR7000M35 4.25 Inch Low Voltage IC New Construction Housing is designed for insulated new construction applications. IC designation allows for direct contact with insulation. Below ceiling accessible. Takes up to a 7/8 inch ceiling thickness. Low voltage 12 volt magnetic transformer included. One 35 watt, 12 volt GU5.3 MR16 bulb is required, but not included. Dimmable with a low voltage magnetic dimmer. Consult bulb manufacturer for low voltage magnetic dimmer compatibility when using LED bulb option. Suitable for damp locations. UL listed. 4 5/16 inch ceiling cut out. 19.5 inch length x 10 inch width x 7.1 inch height. A complete fixture includes a housing and trim, sold separately.

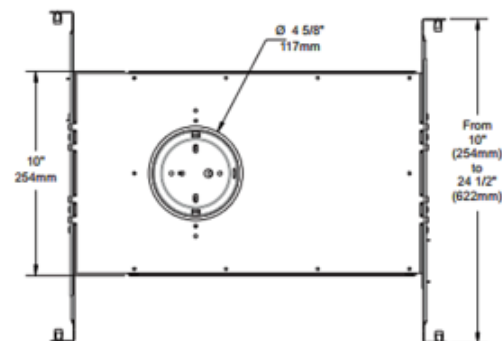
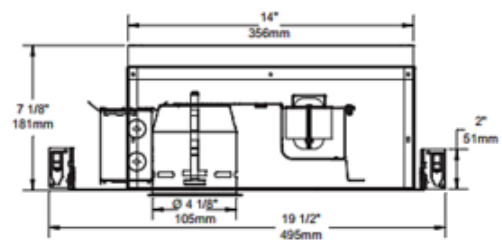


TRIM COLOR	N/A
BODY FINISH	Galvanized Steel
WATTAGE	35W
DIMMER	Low Voltage Magnetic
DIMENSIONS	19.5"L x 10"W x 7.1"H
BULB NOT INCLUDED	
LAMP	1 x MR16/GU5.3 (bipin)/35W/12V Halogen MR16/GU5.3 (bipin)/12V LED

Technical Information

CEILING TYPE	Drywall with Trim
HOUSING TYPE	New construction IC
HOUSING HEIGHT	7"
APERTURE SIZE	4.250"

SPEC # CLT3798



COMPANY	PROJECT	FIXTURE TYPE	APPROVED BY	DATE