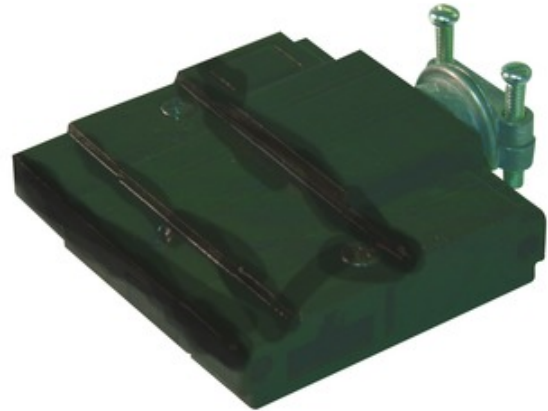


BRAND Visual Comfort Architectural

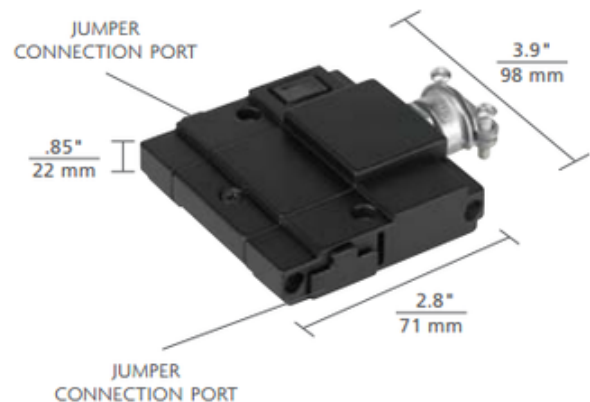
DESCRIPTION

The Undercabinet Splice Box is required for hardwire applications. Conduit is fed into the back and jumper connector ports on each side can feed power to undercabinet light runs in two directions. The 1 inch jumper connector (sold separately) can be used to place the splice box next to the undercabinet housing. Longer jumper connectors can be used to place the splice box in a more convenient or remote location. Includes 3/8 inch conduit connector. Designed for use with Tech Lighting Unilume Slimline and Glyde undercabinet lights.



Shown in: Black

| | |
|--------------------|------------------------|
| SHADE COLOR | N/A |
| BODY FINISH | Black |
| WATTAGE | N/A |
| DIMMER | N/A |
| DIMENSIONS | 3.9"L x 2.8"W x 0.85"H |
| LAMP | N/A |



SPEC # ELE69904

| COMPANY | PROJECT | FIXTURE TYPE | APPROVED BY | DATE |
|---------|---------|--------------|-------------|------|
| | | | | |