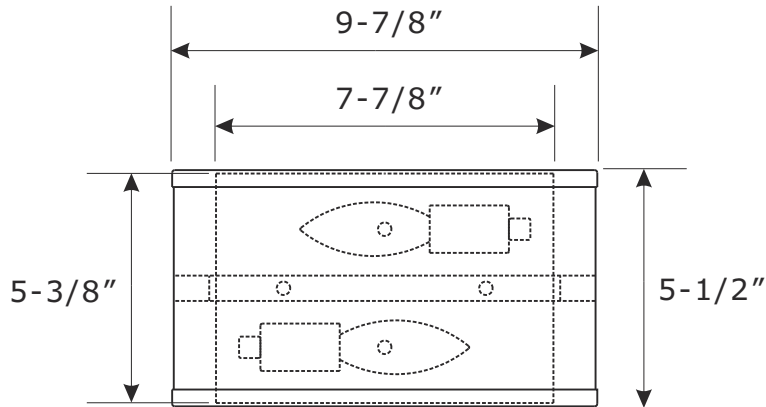


CRYSTORAMA

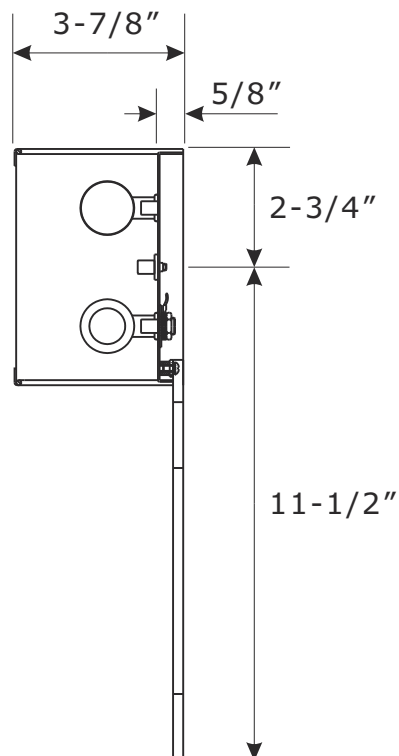
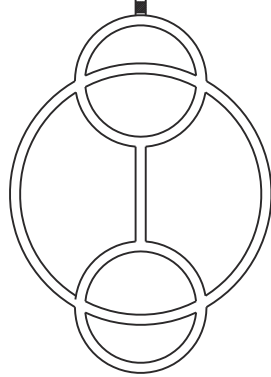
LIGHTING THE WAY FOR SIXTY YEARS



ASSEMBLY INSTRUCTION MODEL#LRL-992-VG-BK



FRONT VIEW



SIDE VIEW

WARNING:



Electrical Danger



Turn Power off


All electrical components must be installed by a licensed electrician in accordance with the National Electric Code and the appropriate local electrical codes.



You will need 2- Candelabra Base Bulb
40 Watts Recommended 60 Watts Max.
USE LED BULBS FOR EXTENDED USE
This fixture is Dry rated

How to install

1. Attach the decorative arm to the bottom of backplate with the lock washers and screws.
2. Thread the two mounting screws into the matching holes in the mounting plate. Secure the mounting plate to outlet box with the outlet box screws.
3. Install backplate onto the mounting plate, and secure with the cap nuts.
4. Install the fabric shade onto the backplate, and secure with the nut screws.
5. Install the bulb(not included) into the socket.

 WARNING: This product can expose you to Lead which is known to the state of California to cause cancer and/or birth defects or reproductive harm. For more information go to www.P65Warnings.ca.gov

Part Number

Part Numbers

- A. (1)-Mounting hardware
- B. (1)-Backplate L7-7/8"xW5-3/8"xH5/8" #XRF992VGBKP8IN
- C. (2)-Cap nut
- D. (1)-Decorative arm
- E. (2)-Screw
- F. (2)-Lock washer
- G. (1)-Fabric shade L9-7/8"xW3-7/8"xH5-1/2" #XRF992BKSHA10IN
- H. (2)-Nut screw
- I. (2)-Socket

