


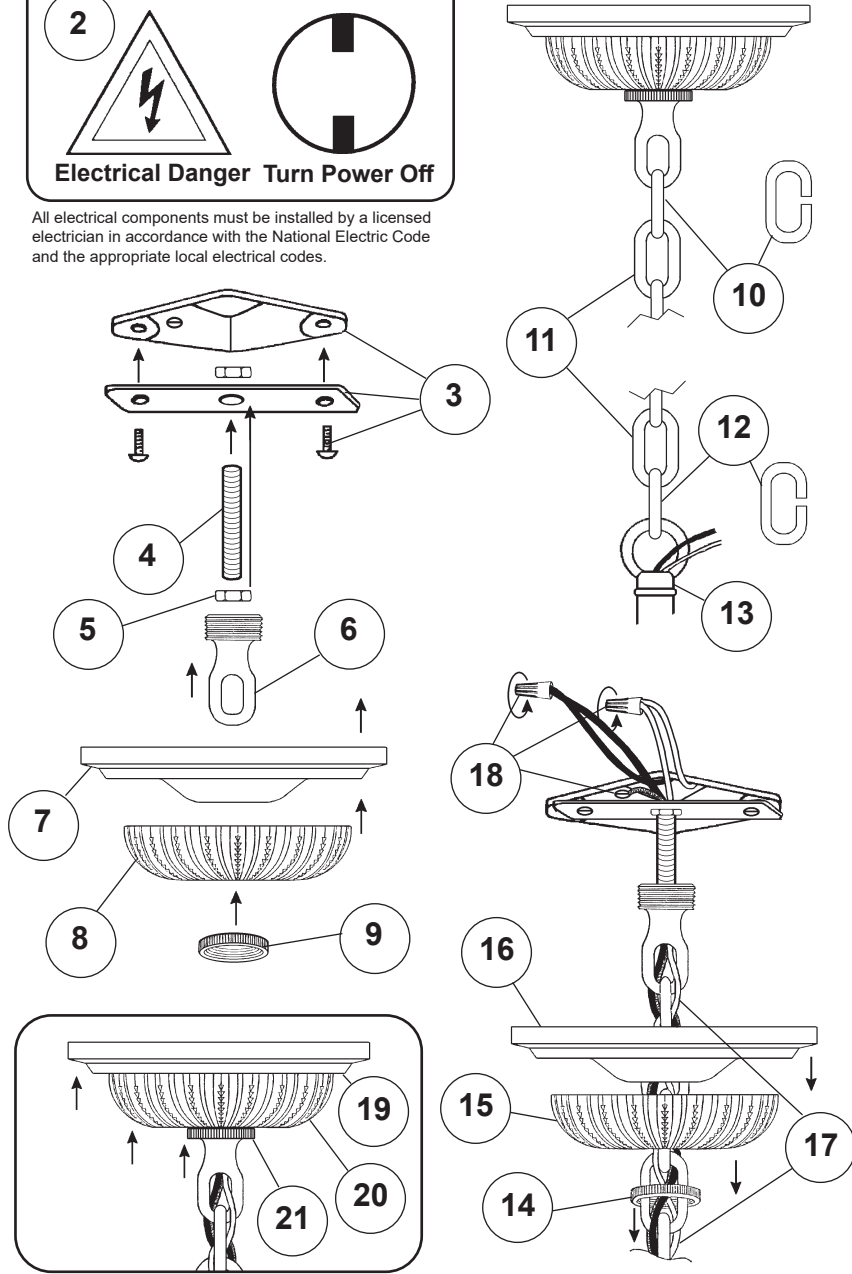
Instructions for electrician
STEPS 2 - 21

2 **WARNING:**



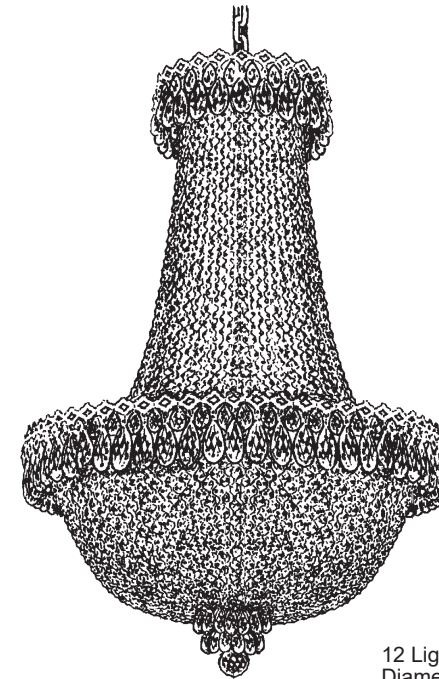
Electrical Danger Turn Power Off

All electrical components must be installed by a licensed electrician in accordance with the National Electric Code and the appropriate local electrical codes.



CHANDELIER 2622-___O TRIM DIAGRAM

(Finish Option)



THIS DESIGN IS THE PROPRIETARY TRADE DRESS/TRADEMARK OF W SCHONBEK LLC.

12 Lights
Diameter: 19-1/2"
Body Length: 28"
Hanging Weight: 16 lbs.



See diagram on back page
Follow steps in exact order
Save this trim diagram for future reference

1 **IMPORTANT**
Person who opens carton should record the following information for future service.


CODE # _____ Four-digit number on outside of carton.
PACKER # _____ See crystal package label.
ORDER # _____ See crystal package label.



Instructions for crystal trimming
STEPS 22 - 34

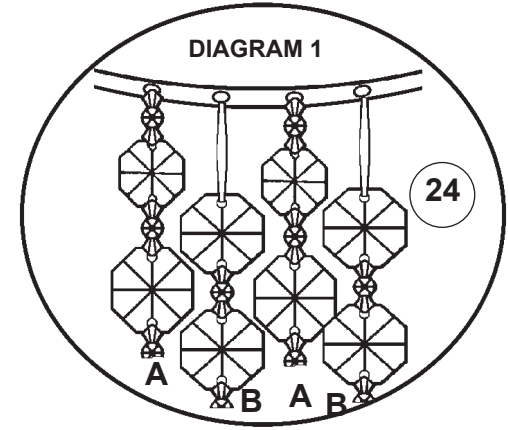
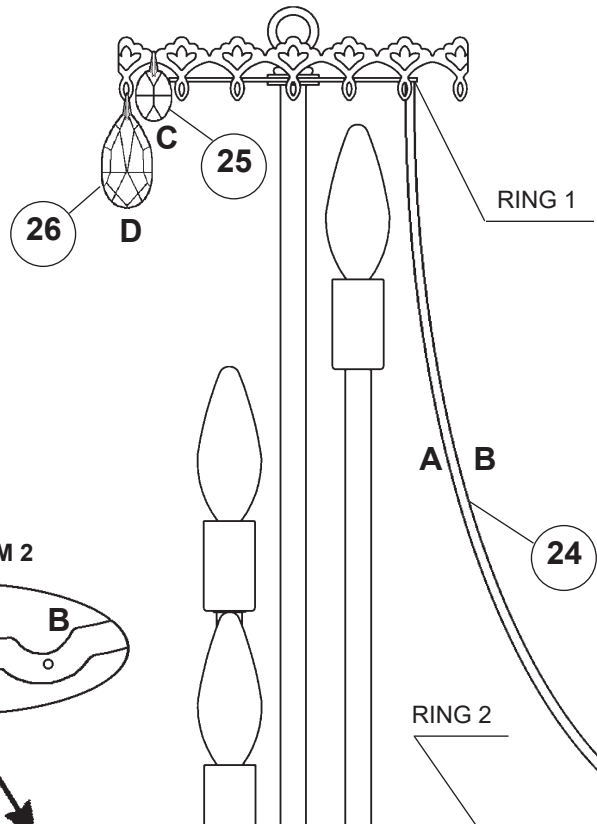


22



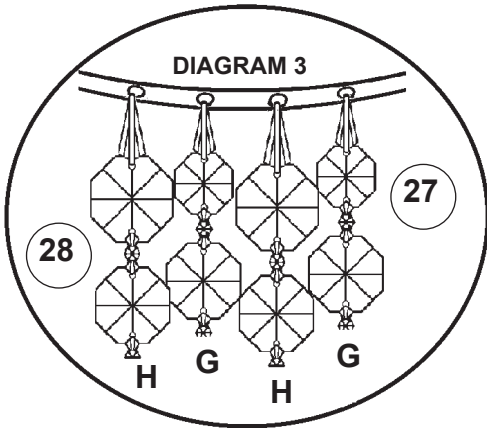
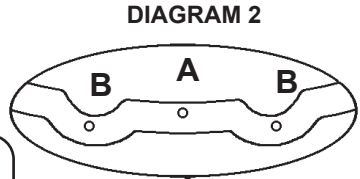
You will need 12 - B10
 25 Watts Recommended
 60 Watts Max

Install bulb and be sure
 to test fixture **BEFORE**
 trimming.



Small jewel at top and graduates to a larger jewel toward bottom of chain.

NOTE: Hang drop "C" from scallop, **NOT** through the loop on the gallery.

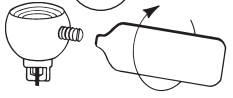


Large jewel at top and graduates to a smaller jewel toward bottom of chain.

23 Attach the bottom finial section by attaching the jackchain into the half ball located on the bottom of the frame.

NOTE: Raise the large finial washer for easier installation of Chains "H".

30



Tighten With
 Tool Provided.