

ASSEMBLY INSTRUCTIONS

ITEM DESCRIPTION:

ITEM NO.: WMI69

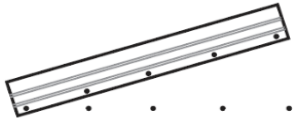
NAME: Frida Mirror

MATERIAL TYPE: Iron

FINISH: Burnt Iron

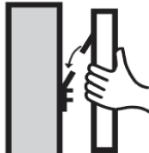
ITEM NET WEIGHT: 46 LBS

Figure 1



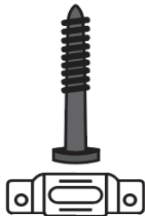
Secure one end first, then pivot until bracket is level. Mark each hole as shown.

Figure 2



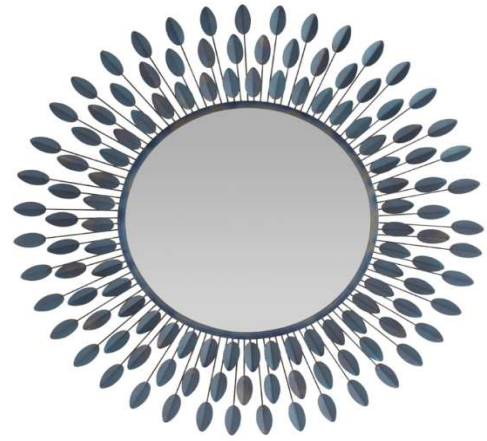
As you hang item on wall bracket, you can slide item 2 or 3 inches left or right for best centering.

Figure 3



PARTS INCLUDED:

Mirror	Qty: 1
Security Cleat	Qty: 1
Drywall Anchors	Qty: 7
Screws	Qty: 7
T-SCREWS	Qty: 1
Drywall Anchors for T-Screw	Qty: 1



- Do not throw away packaging materials until assembly is complete
- Stud mounting is recommended. Use proper hardware for your wall type, these instructions are for drywall. When in doubt, consult your local hardware store. For your safety, installation by two people is recommended.

TO ASSEMBLE:

1. Position mirror in desired location on wall.
2. Position security cleat in desired location and mark location of each dry wall anchor installation, as shown in Figure 1.
3. Remove security cleat from the wall.
4. Drill 5/16" pilot holes in wall. Position dry wall anchor over hole and gently tap anchor into wall until cap prongs are embedded in wall and cap is snug against surface. Turn screw clockwise pressing firmly to prevent anchor from rotating. Tighten screw until resistance is felt, this will fully expand the anchor. Turn screw counter clockwise to remove screw. Anchor will remain embedded in wall.
5. Place security cleat over anchors and insert; then tighten all screws.
6. Hang mirror on wall bracket, as shown in Figure 2.
7. Now, align Bottom T-Screw on wall with Bracket, as shown in Figure 3 and use wrench clockwise on T-Screw so that it locks mirror from moving forward.

CARE INSTRUCTIONS:

Wipe with a soft, dry cloth. To protect finish, avoid the use of chemicals and household cleaners.