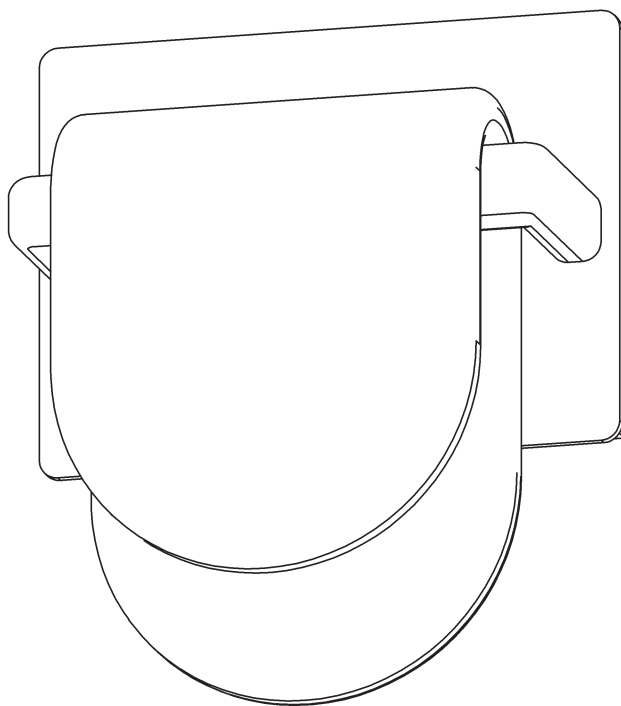


ASSEMBLY & INSTALLATION INSTRUCTIONS

B564

Riverbed Sconce 209980



HUBBARDTON FORGE.

MODERN AMERICAN BLACKSMITHS | FINE, HAND CRAFTED LIGHTING
CASTLETON, VERMONT USA | HUBBARDTONFORGE.COM

57486

1 OF 4

Component Parts

- A Fixture
- B Crossbar
- C Driver
- D #8 Screw (2)
- E Cupped Washer
- F Ground Screw
- G Glass

ASSEMBLY & INSTALLATION INSTRUCTIONS

B564

Riverbed Sconce 209980

CAUTION: FAILURE TO INSTALL THIS FIXTURE PROPERLY MAY RESULT IN SERIOUS PERSONAL INJURY OR DEATH AND PROPERTY DAMAGE. We recommend installation by a licensed electrician. This product must be installed in accordance with applicable installation code(s), by a person familiar with the construction and operation of the product and the hazards involved.*

Please Note: After installation extra hardware and accessories are possible due to our kits are used on multiple products and options.

To Install To Wall (Figure 1)

CAUTION: BE SURE POWER IS OFF AT THE MAIN BREAKER BOX PRIOR TO INSTALLATION.

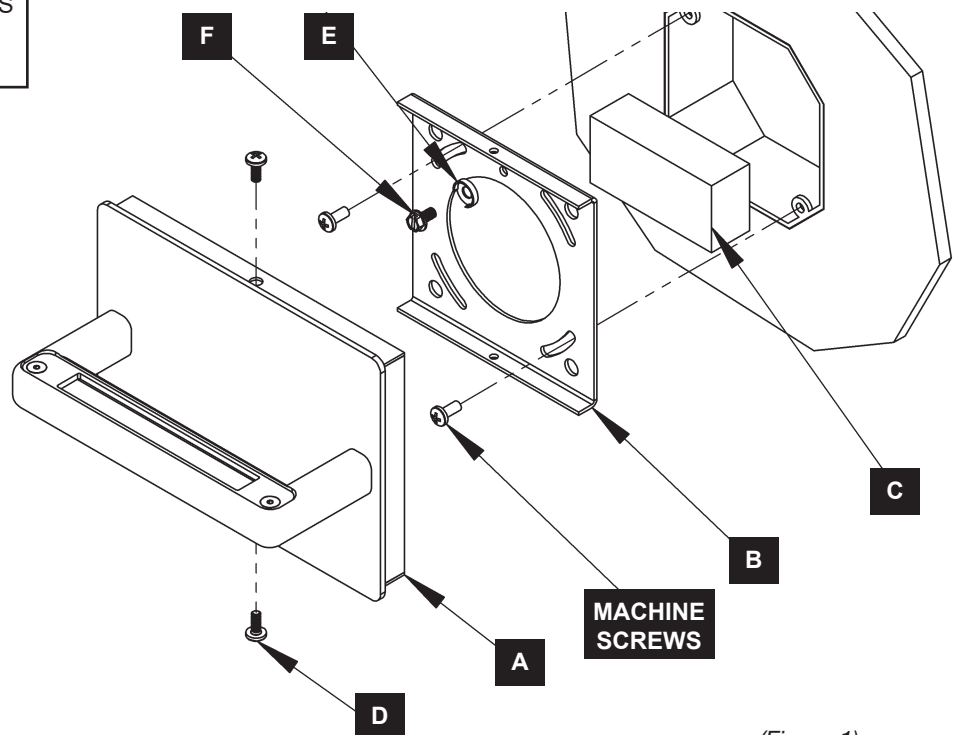
1. Carefully unpack fixture (A) from the carton.
2. Hold driver (C) close to wall. Using suitable wire connectors (not provided), connect driver wires to supply wires (white to white and black to black).

CAUTION: MAKE SURE WIRE CONNECTORS ARE TWISTED ON SECURELY AND NO BARE WIRE IS EXPOSED.

3. Push driver (C) into electrical box with LED wires facing out.
4. Using two machine screws (not provided) attach crossbar (B) to electric box.
Note: A new electrical box comes with screws. When replacing a fixture, retain the existing screws for use with the new fixture.
5. Attach a pigtail lead to crossbar (B) using cupped washer (E) and ground screw (F) found in kit bag.
6. Using wire connectors provided, connect driver (C) wires to LED wires (red to red and blue to blue).
7. Connect all ground wires (bare copper or green to bare copper or green) together.
8. Push fixture (A) firmly against the wall. Attach fixture (A) to wall using a #8 screw (D) on top and bottom.

CAUTION: BE SURE NO WIRES ARE PINCHED BETWEEN THE FIXTURE AND THE WALL.

9. Follow steps on next page to install glass.



(Figure 1)

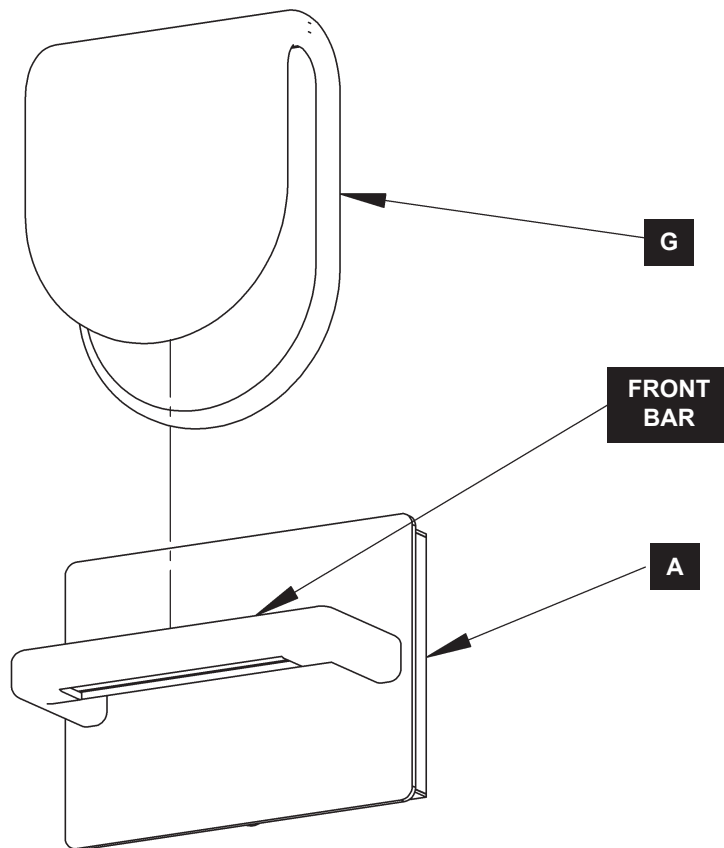
Riverbed Sconce 209980

To Install Glass Assembly (Figure 2)

1. Carefully unpack glass (G).
2. Place glass (G) over front bar of fixture (A).

Note: Design preference is to have longer side of glass (G) towards wall.

3. Gently lower glass (G) until it rests of fixture (A).
4. Restore electricity at main breaker.



(Figure 2)

If you need further assistance, or find that you are missing any parts, please contact the dealer from which you purchased this product.
We hope you enjoy your fixture!

*** Hubbardton Forge will not be liable for injury or damage caused by improper installation, lamping or use of this fixture.**