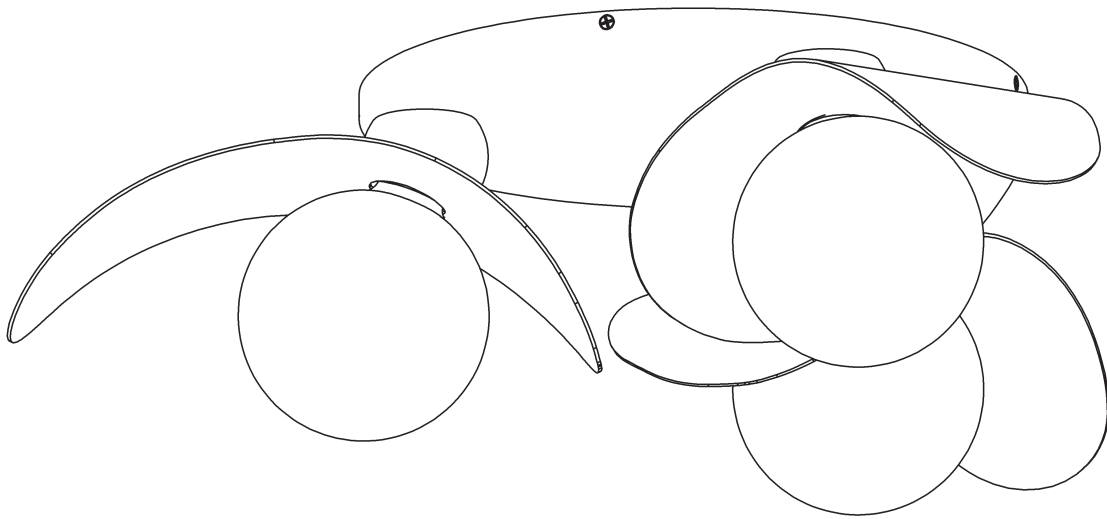


# ASSEMBLY & INSTALLATION INSTRUCTIONS

Yoki Semi Flush 122110

A1022



**Component Parts**

- A        Fixture**
- B        Mounting Bracket**
- C        #8 Flat Head Screws (4)**
- D        Anchors (4)**
- E        #10 Screws (4)**
- F        Ground Screw**
- G        Cupped Washer**
- H        #8 Machine Screw**
- I        Safety Cable**
- J        Socket (3)**
- K        Bulb (not included) (3)**



# ASSEMBLY & INSTALLATION INSTRUCTIONS

A1022

Yoki Semi Flush 122110

**CAUTION: FAILURE TO INSTALL THIS FIXTURE PROPERLY MAY RESULT IN SERIOUS PERSONAL INJURY OR DEATH AND PROPERTY DAMAGE.** We recommend installation by a licensed electrician. This product must be installed in accordance with applicable installation code(s), by a person familiar with the construction and operation of the product and the hazards involved.\*

**Caution:** Do not exceed maximum wattage noted on fixture. Use only recommended bulbs with fixture.

*Please Note: After installation extra hardware and accessories are possible; our kits are used on multiple products.*

## To Install Fixture (Figure 1)

**CAUTION: BE SURE POWER IS OFF AT THE MAIN BREAKER BOX PRIOR TO INSTALLATION.**

1. Carefully unpack the fixture (A) from the carton.
2. Mounting bracket (B) is shipped installed in fixture (A). Remove #8 flat head screws (C) to separate. Retain screws for later use.
3. Place mounting bracket (B) over the electrical box. Line up holes in bracket with holes in electrical box. With a pencil, mark the location of mounting holes in bracket on ceiling. Set bracket (B) aside.
4. Drill 1/4" holes in the locations marked on the ceiling. Place the tapered end of the anchors (D) into the holes and gently tap them flush to the ceiling using a light weight hammer.
5. Thread the wires in the electrical box through the hole in the mounting bracket (B) while moving the bracket into position. Using two machine screws (not provided) fasten mounting bracket (B) to the electric box.

**Note:** A new electric box comes with screws. When replacing a fixture, retain the existing screws for use with the new fixture.

6. Install screws (E) into remaining holes with anchors (D). Be sure not to over tighten and strip the anchor (D).
7. Attach a pigtail lead to bracket (B) using ground screw (F) and cupped washer (G) found in kit bag.
8. Hold fixture (A) close to ceiling. Attach safety cable (I) to mounting bracket (B) using #8 screw (H) found in kit bag.
9. Using suitable wire connectors (not provided) connect fixture wires to supply (white to white and black to black). Connect all ground wires (bare copper or green to bare copper or green) together.

**CAUTION: MAKE SURE WIRE CONNECTORS ARE TWISTED ON SECURELY, AND NO BARE WIRE IS EXPOSED.**

10. Carefully tuck all wires inside fixture (A), push fixture firmly against the ceiling.
11. Align holes in fixture (A) with holes in bracket (B) and secure with (4) #8 flat head screws (C). For ease of install, start all screws before tightening completely.

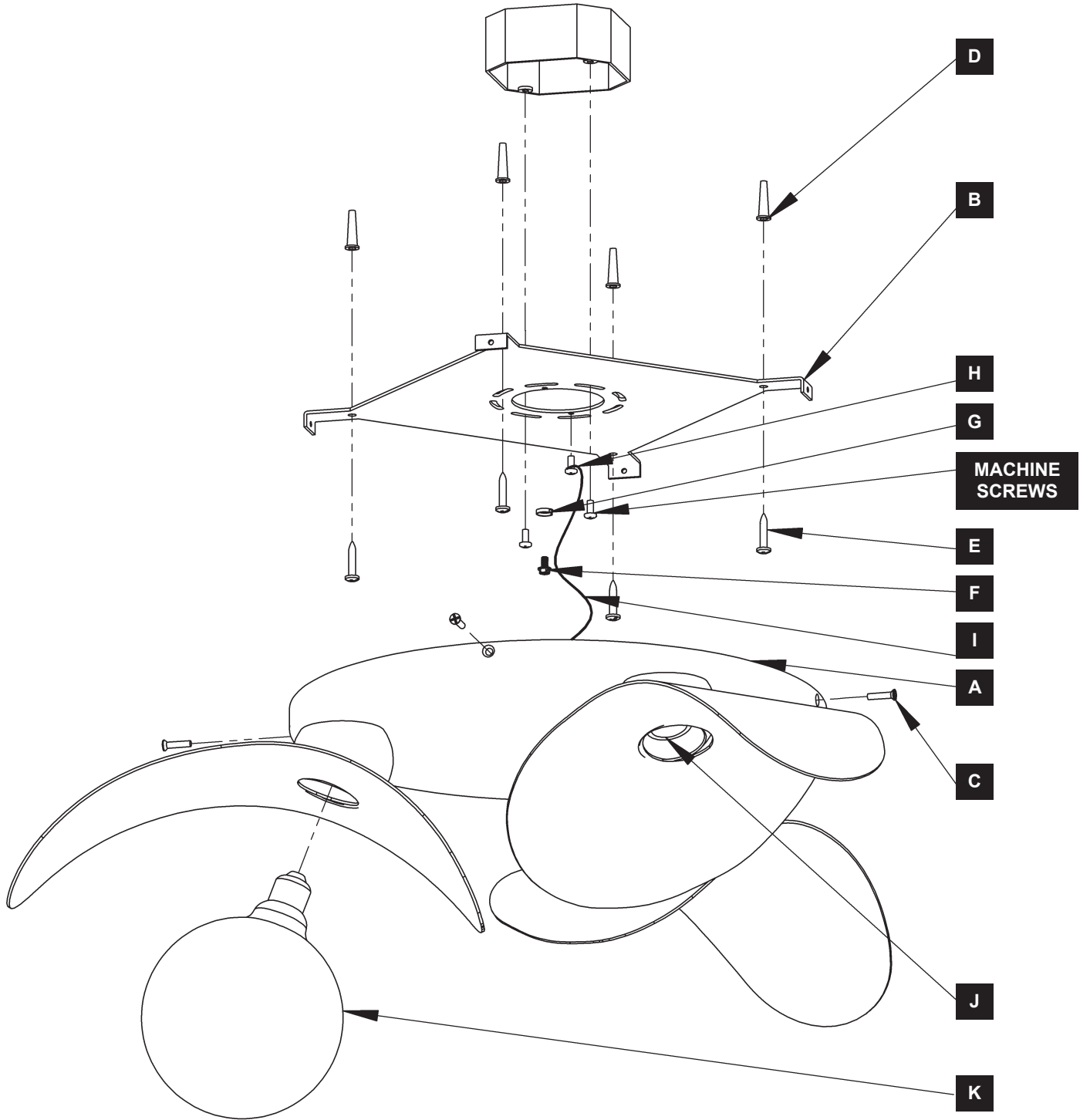
**Note:** Be sure no wires are pinched between the ceiling and the fixture.

12. Install bulbs (K) (not included) into sockets (J).
13. Restore electricity at main breaker.

# ASSEMBLY & INSTALLATION INSTRUCTIONS

Yoki Semi Flush 122110

A1022



(Figure 1)

If you need further assistance, or find that you are missing any parts, please contact the dealer from which you purchased this product. We hope you enjoy your fixture!

*\* Hubbardton Forge will not be liable for injury or damage caused by improper installation, lamping or use of this fixture.*