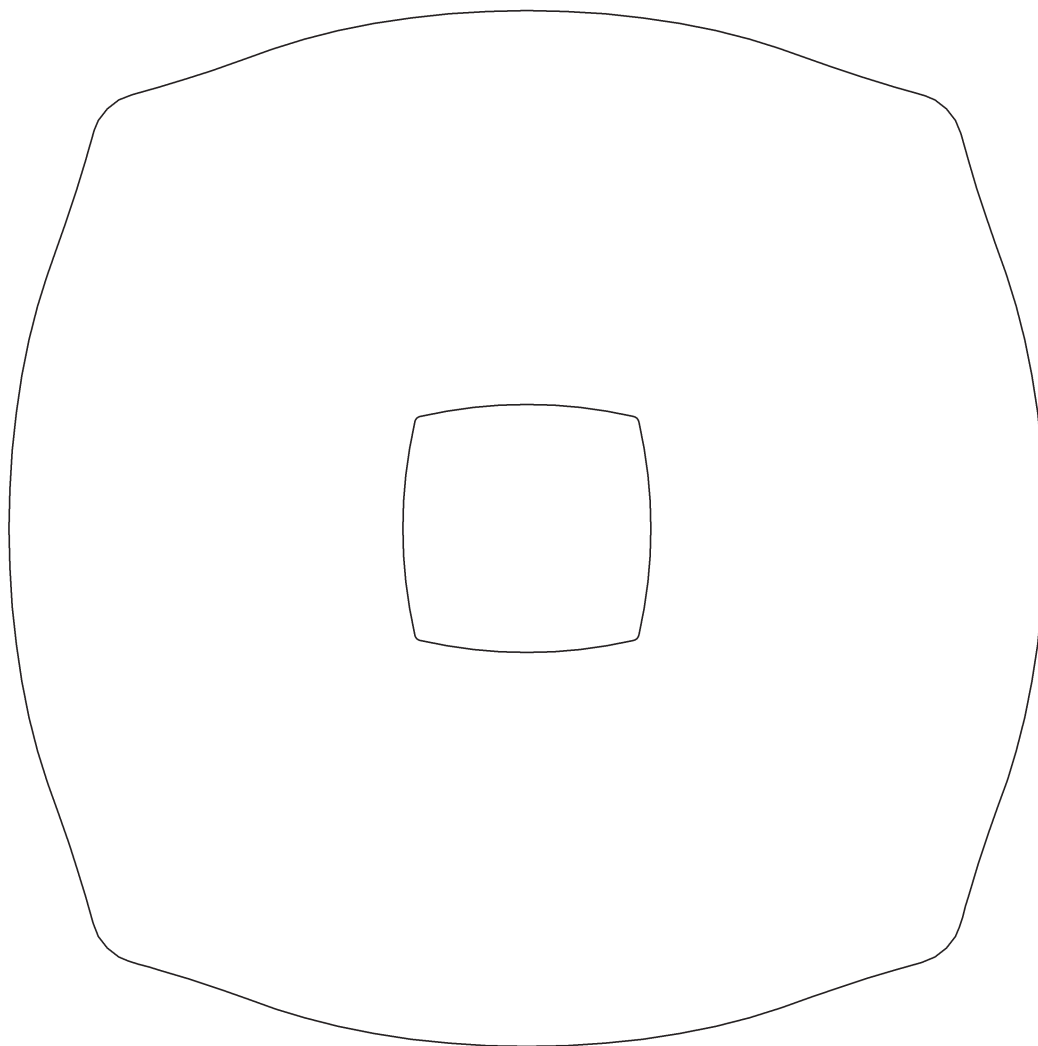


ASSEMBLY & INSTALLATION INSTRUCTIONS

B561

Astra Sconce 201500



HUBBARDTON FORGE®

MODERN AMERICAN BLACKSMITHS | FINE, HAND CRAFTED LIGHTING
CASTLETON, VERMONT USA | HUBBARDTONFORGE.COM

57249
1 OF 4

Component Parts

- A Fixture**
- B Mounting Bracket**
- C Ground Screw**
- D Cupped Washer**
- E #8 Screws (4)**
- F Socket (2)**
- G Bulb (Not Included) (2)**
- H Glass**
- I Stud Plate**
- J Attachment Plate**
- K Nut (2)**

Astra Sconce 201500

CAUTION: FAILURE TO INSTALL THIS FIXTURE PROPERLY MAY RESULT IN SERIOUS PERSONAL INJURY OR DEATH AND PROPERTY DAMAGE. We recommend installation by a licensed electrician. This product must be installed in accordance with applicable installation code(s), by a person familiar with the construction and operation of the product and the hazards involved.*

Caution: Do not exceed maximum wattage noted on fixture. Use only recommended bulbs with fixture.

Please Note: After installation extra hardware and accessories are possible; our kits are used on multiple products.

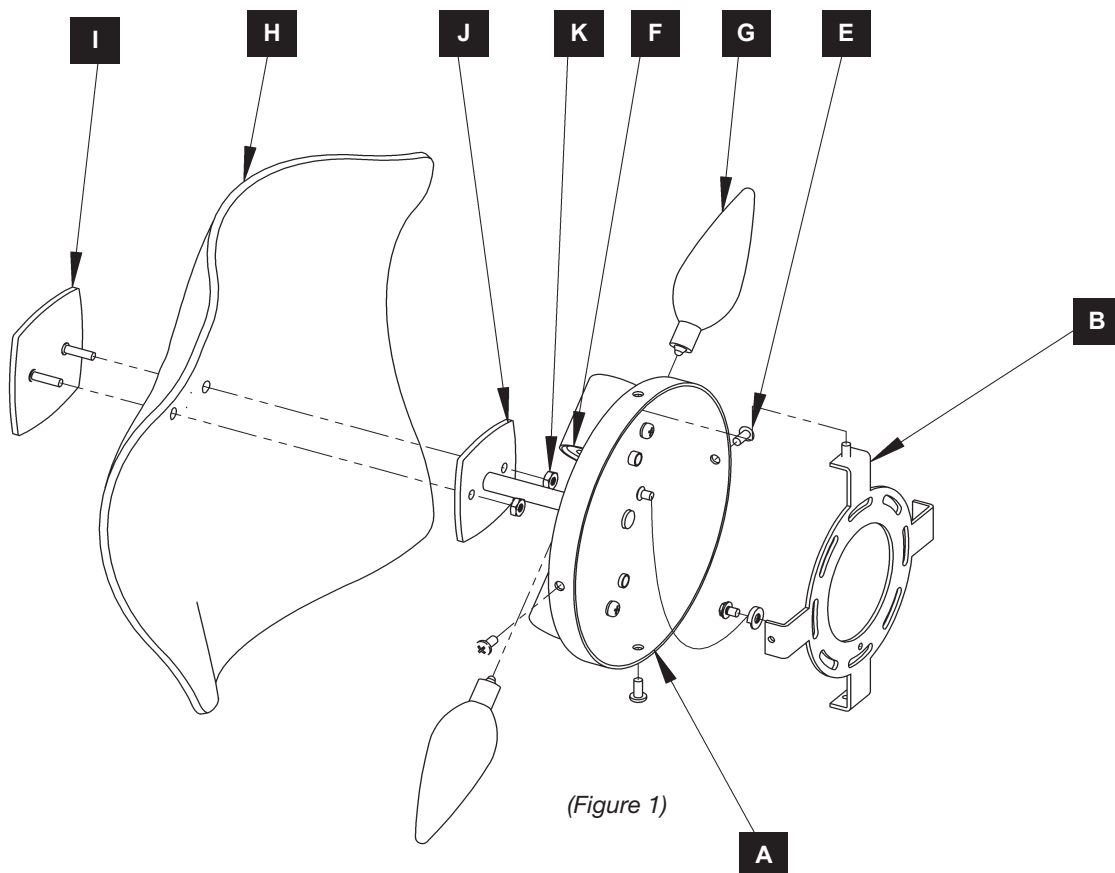
To Assemble Fixture (Figure 1)

CAUTION: BE SURE POWER IS OFF AT THE MAIN BREAKER BOX PRIOR TO INSTALLATION.

1. Carefully unpack fixture (A).
2. Remove #8 screws (E) from fixture (A). Separate mounting bracket (B) and set aside for install.
3. Gather stud plate (I), glass (H), and nuts (K). Place glass (H) over stud plate (I), aligning so studs pass through holes in glass (H).
4. Place glass (H) and stud plate (I) on to fixture (A), passing studs through holes in attachment plate (J). Secure with nuts (K).

Caution: Be careful not to overtighten as this could break glass.

5. Install bulbs (G) (not included) into sockets (F).
6. Refer to instructions on next page to install fixture.



HUBBARDTON FORGE.

MODERN AMERICAN BLACKSMITHS | FINE, HAND CRAFTED LIGHTING
CASTLETON, VERMONT USA | HUBBARDTONFORGE.COM

To Install Fixture (Figure 2)

1. Screw one #8 screw (E1) up through top hole of mounting bracket (B). Thread wires in electrical box through hole in mounting bracket (B) while moving bracket into position. Place mounting bracket (B) over electrical box and secure with two machine screws (not provided). With E1 on top as shown in figure 2.

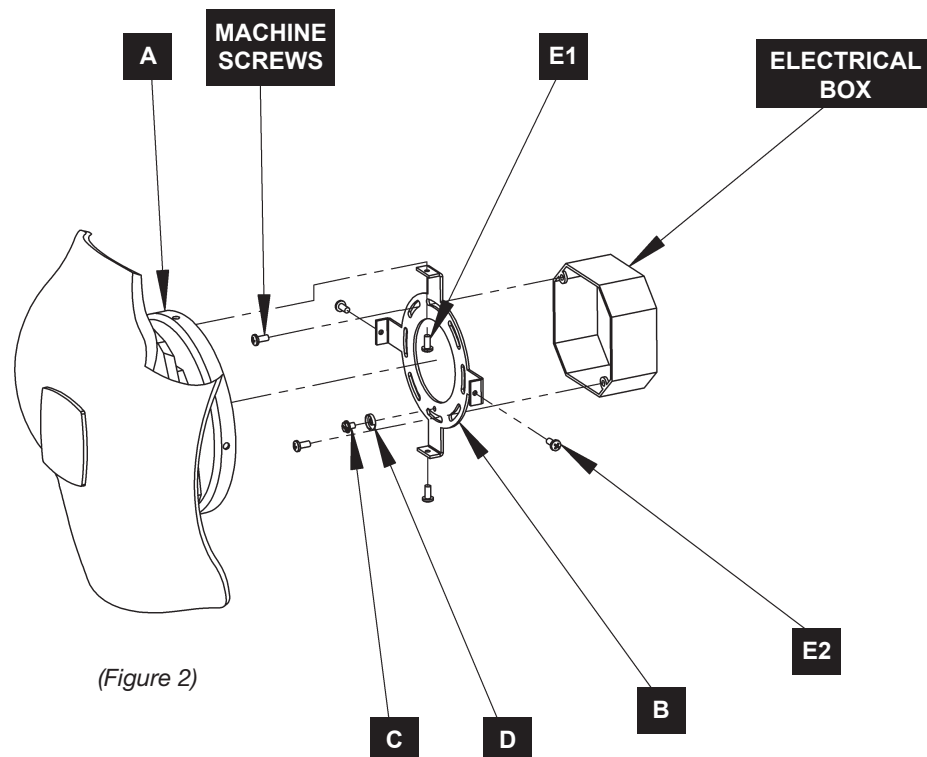
NOTE: A NEW ELECTRIC BOX COMES WITH SCREWS. WHEN REPLACING A FIXTURE, RETAIN THE EXISTING SCREWS FOR USE.

2. Attach a pigtail lead to the mounting bracket (B) using the ground screw (C) and cupped washer (D) found in kit bag.
3. Hold fixture (A) close to wall. Using suitable wire connectors (not provided), connect fixture wires to supply wires (white to white and black to black). Connect all ground wires (bare copper or green to bare copper or green) together.

CAUTION: MAKE SURE WIRE CONNECTORS ARE TWISTED ON SECURELY, AND NO BARE WIRE IS EXPOSED.

NOTE: BE SURE NO WIRES ARE PINCHED BETWEEN FIXTURE AND WALL.

4. Place fixture (A) over mounting bracket (B) top tab with #8 screw (E1) sticking out. This will help hold fixture (A) in place while finishing installation. Secure with remaining #8 screws (E2) on sides and bottom.
5. Restore electricity at main breaker.



If you need further assistance, or find that you are missing any parts, please contact the dealer from which you purchased this product. We hope you enjoy your fixture!

** Hubbardton Forge will not be liable for injury or damage caused by improper installation, lamping or use of this fixture.*



HUBBARDTON FORGE.

MODERN AMERICAN BLACKSMITHS | FINE, HAND CRAFTED LIGHTING
CASTLETON, VERMONT USA | HUBBARDTONFORGE.COM