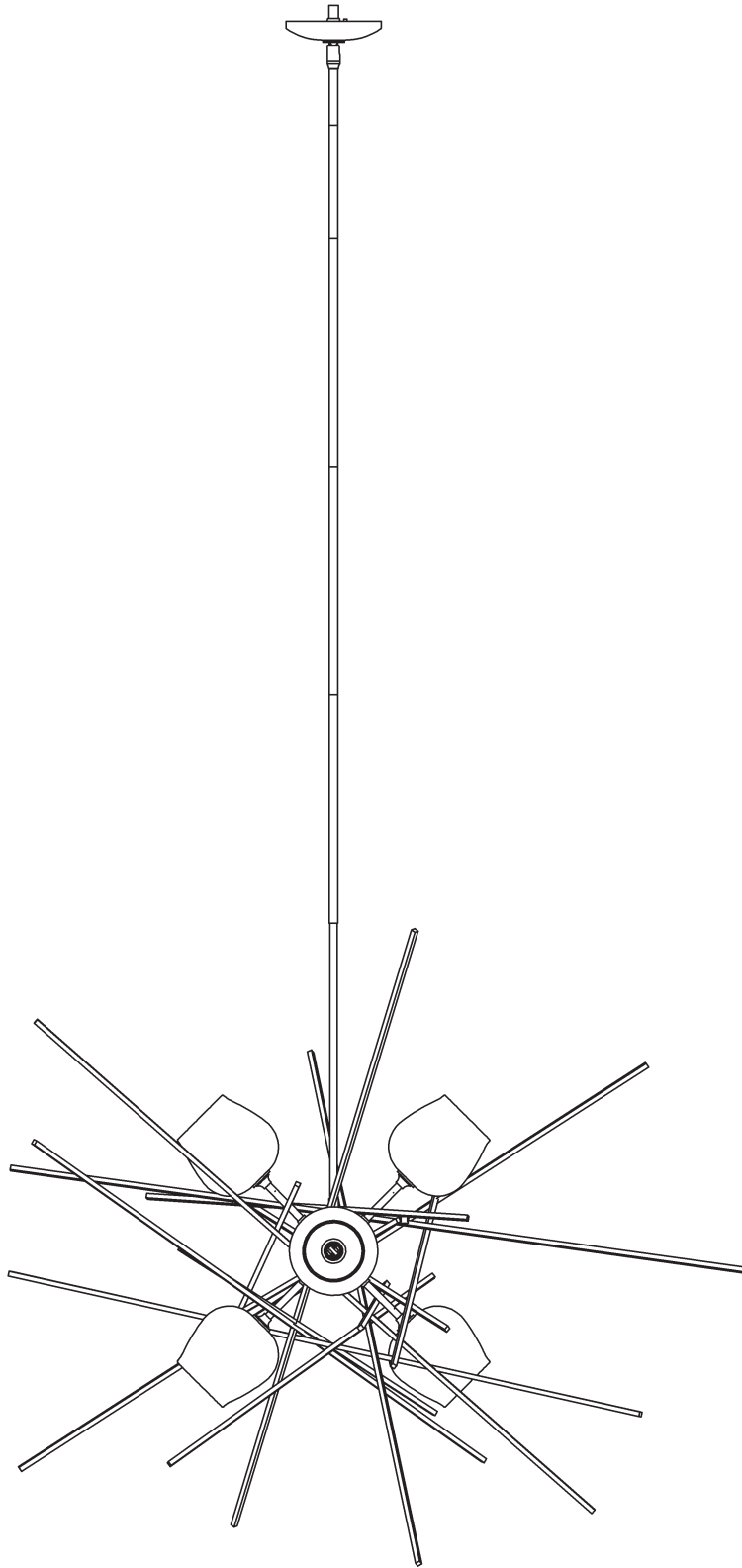


ASSEMBLY & INSTALLATION INSTRUCTIONS

A782

Griffin Starburst Pendant, 131590



Component Parts

- A Fixture**
- B Fixture Coupling**
- C Crossbar**
- D Jam Nut**
- E Threaded Nipple**
- F Ground Screw**
- G Canopy Ring**
- H Canopy**
- I Swivel**
- J 3" Fixture Pipe (1)**
- K 6" Fixture Pipe (1)**
- L 12" Fixture Pipe (3)**
- M Stem Nipple (4)**
- N Socket (6)**
- O Bulb (not included)**
- P Glass (6)**
- Q Retainer (6)**



ASSEMBLY & INSTALLATION INSTRUCTIONS

A782

Griffin Starburst Pendant, 131590

CAUTION: FAILURE TO INSTALL THIS FIXTURE PROPERLY MAY RESULT IN SERIOUS PERSONAL INJURY OR DEATH AND PROPERTY DAMAGE. We recommend installation by a licensed electrician. This product must be installed in accordance with applicable installation code(s), by a person familiar with the construction and operation of the product and the hazards involved.*

Caution: Do not exceed maximum wattage noted on fixture. Use only recommended bulbs with fixture.

Please Note: After installation extra hardware and accessories are possible; our kits are used on multiple products.

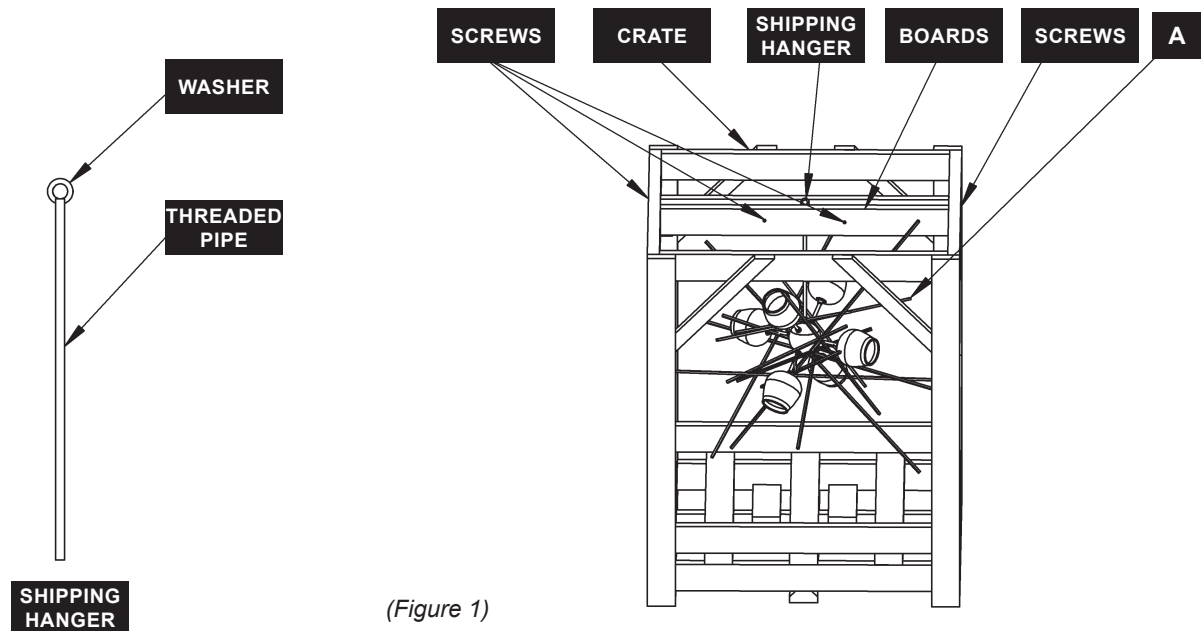
To Unbox Fixture (Figure 1)

CAUTION: THE INSTALLATION OF THIS FIXTURE REQUIRES TWO PEOPLE

1. The fixture (A) will be shipped in a crate.
2. Remove cardboard from the outside of the crate.
3. The fixture is shipped with a shipping hanger installed in it. The shipping hanger is sandwiched between two wood boards.
4. While supporting fixture carefully remove the four screws that are holding the board. Remove the board.

CAUTION: REMOVING THE SCREWS AND BOARD WILL ALLOW THE FIXTURE TO DROP, BE SURE TO SECURE FIXTURE WHILE REMOVING THE SCREWS AND BOARD.

5. Carefully lower the fixture until it is supported by the zip-tie.
6. Unscrew shipping hanger from the fixture.
7. Assembly of the fixture will take place while it is suspended inside the crate by zip-tie.



ASSEMBLY & INSTALLATION INSTRUCTIONS

A782

Griffin Starburst Pendant, 131590

CAUTION: FAILURE TO INSTALL THIS FIXTURE PROPERLY MAY RESULT IN SERIOUS PERSONAL INJURY OR DEATH AND PROPERTY DAMAGE. We recommend installation by a licensed electrician. This product must be installed in accordance with applicable installation code(s), by a person familiar with the construction and operation of the product and the hazards involved.*

Caution: Do not exceed maximum wattage noted on fixture. Use only recommended bulbs with fixture.

Please Note: After installation extra hardware and accessories are possible due to our kits are used on multiple products and options.

To Install Fixture (Figure 2)

CAUTION: BE SURE POWER IS OFF AT THE MAIN BREAKER BOX PRIOR TO INSTALLATION.

1. Thread jam nut (D) and crossbar (C) onto threaded nipple (E) with ground screw (F) facing towards swivel (I); leave both parts loose.
2. Using two machine screws (not provided), temporarily fasten crossbar (C) to the electric box.

NOTE: A NEW ELECTRIC BOX COMES WITH SCREWS. WHEN REPLACING A FIXTURE, RETAIN THE EXISTING SCREWS FOR USE WITH THE NEW FIXTURE.

3. Adjust the length of threaded nipple (E) in crossbar (C) so that canopy ring (G) will hold canopy (H) against the ceiling with no threads showing for best appearance. When the correct adjustment is established, tighten jam nut (D) against crossbar (C) to secure the adjustment.
4. Remove crossbar (C) from the electrical box and proceed with the assembly instructions.
5. Carefully thread fixture coupling (B) over fixture wires.
6. Apply a drop of the supplied thread locking compound to the threads of fixture coupling (B) and screw into fixture (A), being careful not to twist the wires.
7. Locate fixture pipes (J, K, L), fixture (A), stem nipples (M) . Stem nipples (M) can be found in the kit bag.
8. Provided are multiple fixture pipes in three different lengths. Choose the combination that will achieve the overall height desired. Refer to the table below to determine the pipes required to reach the desired overall height. Once you have determined the components necessary, feed the wires that exit fixture (A) through the individual components and thread pipes and nipples together. Wires will slip easier through loose components than through pipes and nipples that are pre-assembled. Once wires are run, apply thread locking compound to all the connection points and assemble the pipes and nipples.

		Overall Height of Fixture															
		36.3	39.3	42.3	45.3	48.3	51.3	54.3	57.3	60.3	63.3	66.3	69.3	72.3	75.3	78.3	81.3
# of Pipes Required	3" Pipe (I)		1		1		1		1		1		1		1		1
	6" Pipe (J)			1	1			1	1			1	1			1	1
	12" Pipe (K)					1	1	1	1	2	2	2	2	3	3	3	3

NOTE: APPLICATION OF THE THREAD LOCKING COMPOUND IS NECESSARY TO PREVENT THE PIPE FROM LOOSENING DURING REGULAR MAINTENANCE AND CLEANING OF THE FIXTURE. BE CERTAIN TO APPLY THE COMPOUND.

9. Carefully slide canopy ring (G) and canopy (H) over wires and fixture pipes (J, K, L) until they rest on fixture (A).
10. Slip wires from the fixture (A) through assembled swivel (I) and threaded nipple (E).
11. Refer to instructions on next page to continue installation.

ASSEMBLY & INSTALLATION INSTRUCTIONS

A782

Griffin Starburst Pendant, 131590

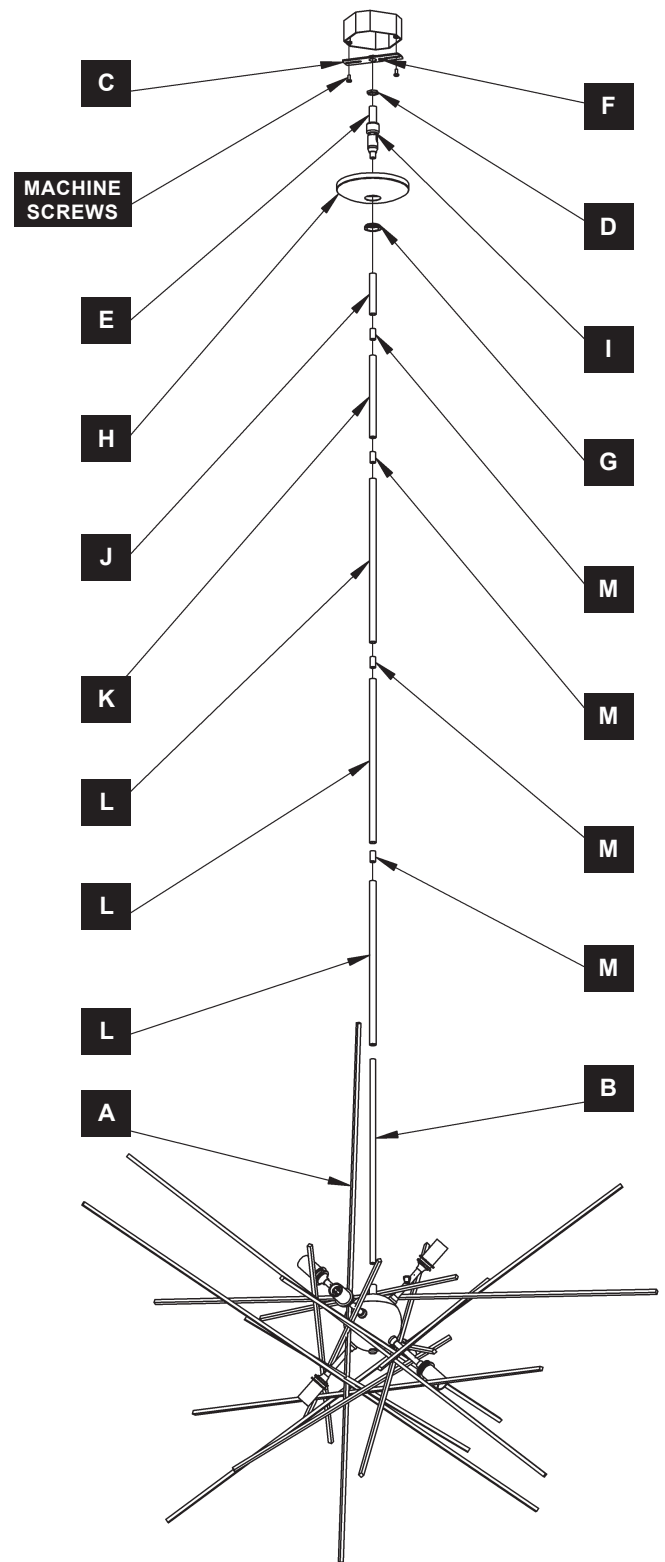
- Using two machine screws (not provided), fasten crossbar (C) to the electric box.
- Using suitable wire connectors (not provided) connect fixture wires to supply (white/ribbed to white and black/smooth to black). Attach a pigtail lead to crossbar ground screw (F). Hold canopy (H) close, connect all ground wires (bare copper or green to bare copper or green).

CAUTION: MAKE SURE WIRE CONNECTORS ARE TWISTED ON SECURELY, AND NO BARE WIRE IS EXPOSED.

- Slide canopy (H) against ceiling, and secure with canopy ring (G).

CAUTION: BE SURE NO WIRES ARE PINCHED BETWEEN CANOPY (I) AND THE CEILING.

- Refer to instructions on next page to install glass.



(Figure 2)

ASSEMBLY & INSTALLATION INSTRUCTIONS

A782

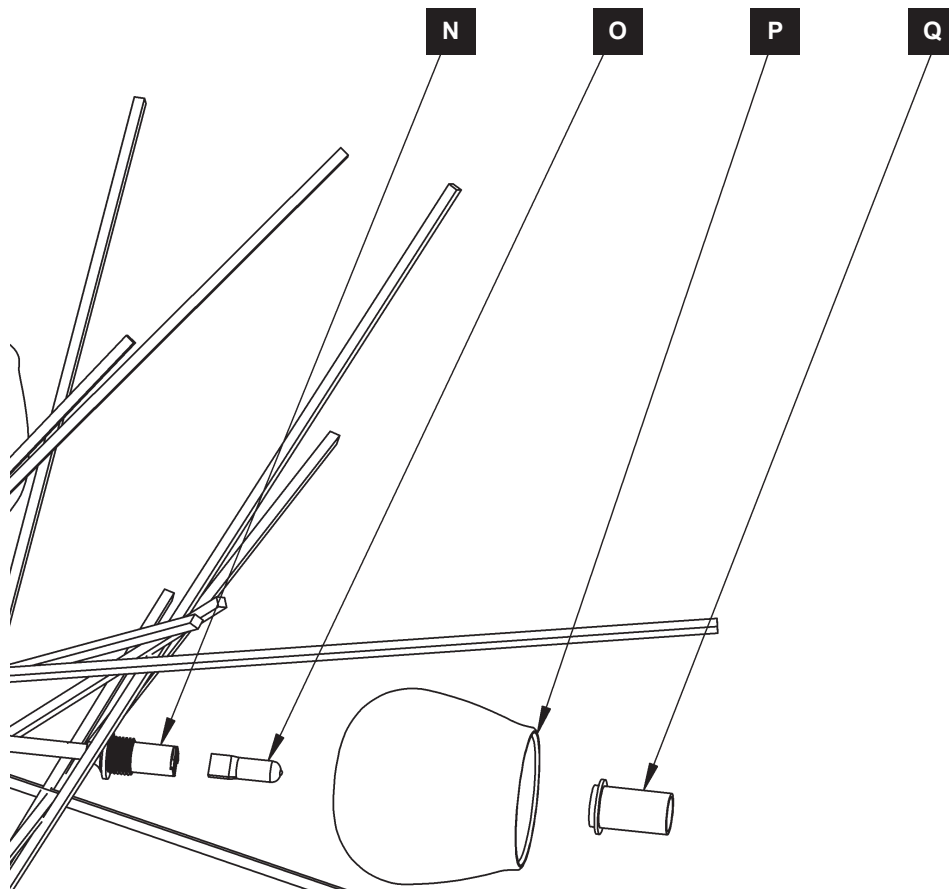
Griffin Starburst Pendant, 131590

To Install Glass (Figure 3)

1. Remove retainer (Q) from socket; retainers are shipped installed on fixture (A).
2. Install bulb (O) (not included) into socket (N).
3. Carefully unpack glass (P). Place glass (P) over socket (N) and secure with retainer (Q).

NOTE: BE CAREFUL NOT TO CROSS THREAD OR OVERTIGHTEN AND BREAK GLASS.

4. Repeat for remaining glass (P) and sockets (N).
5. Restore electricity at the main breaker



(Figure 3)

If you need further assistance, or find that you are missing any parts, please contact the dealer from which you purchased this product. We hope you enjoy your fixture!

**Hubbardton Forge will not be liable for injury or damage caused by improper installation, lamping or use of this fixture.*