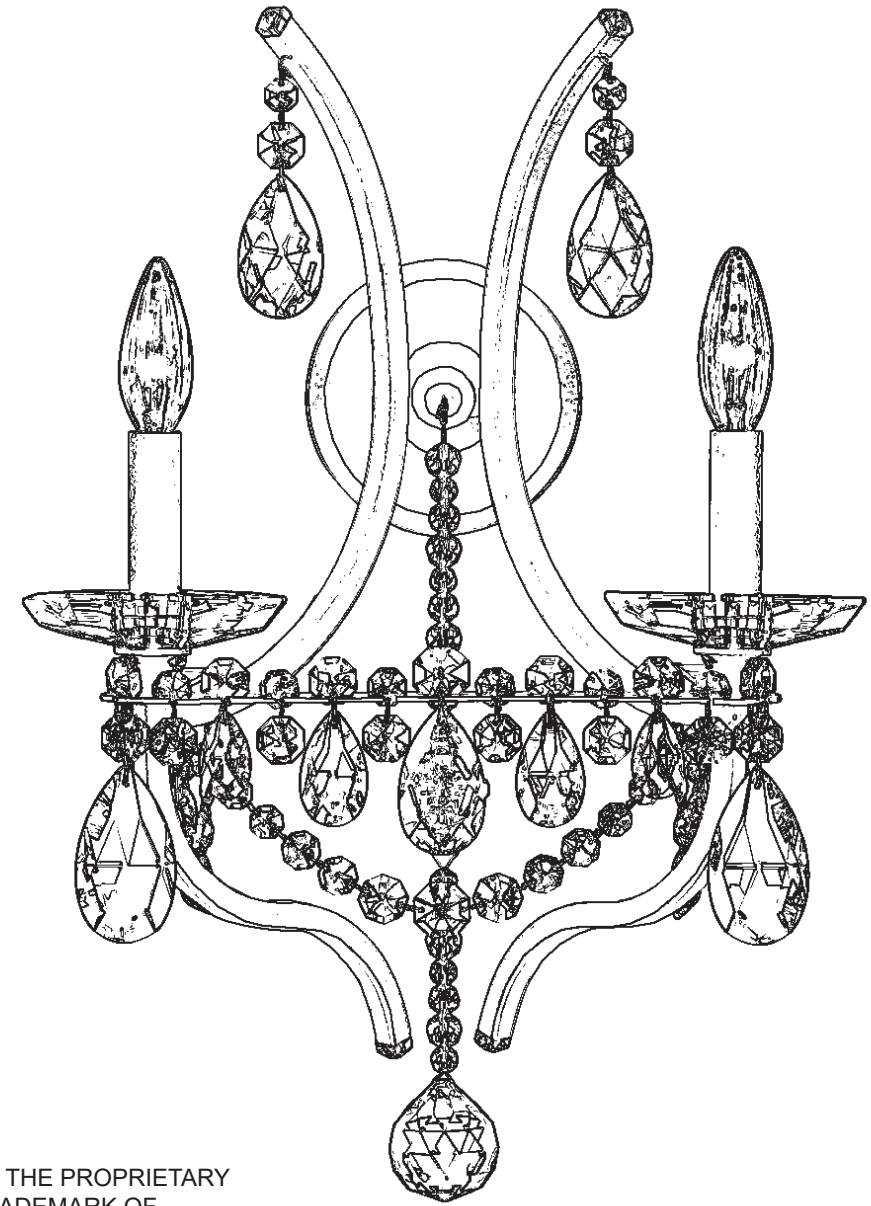


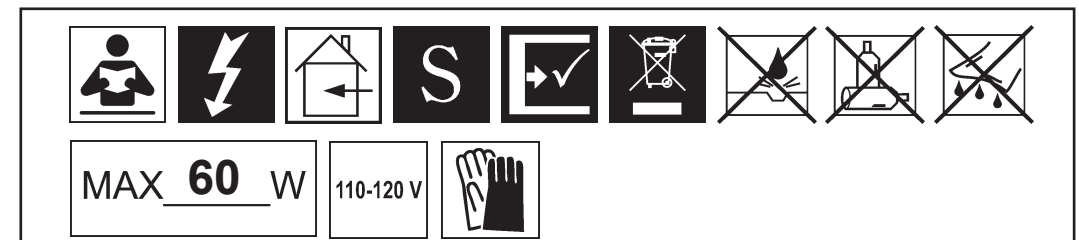
SCHONBEK
*Signature*TM

ADLEY
S77502-__ __H

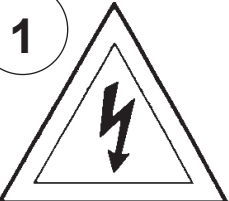
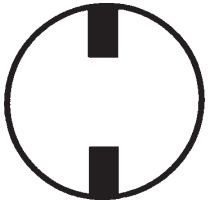


THIS DESIGN IS THE PROPRIETARY
TRADE DRESS/TRADEMARK OF
W SCHONBEK LLC.

SCHONBEK
*Signature*TM

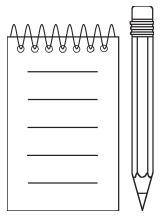
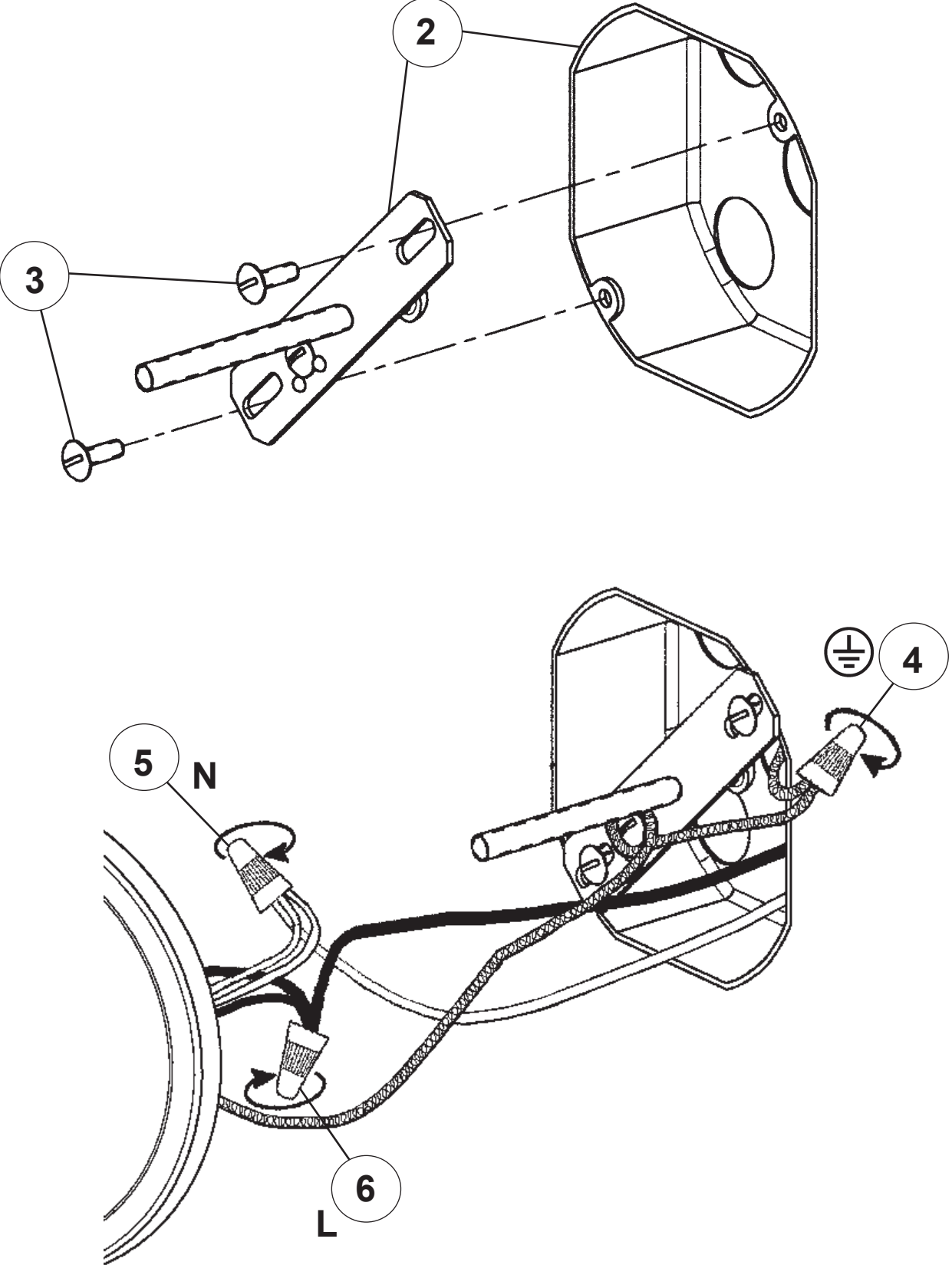


WARNING:

1  

Electrical Danger Turn Power Off

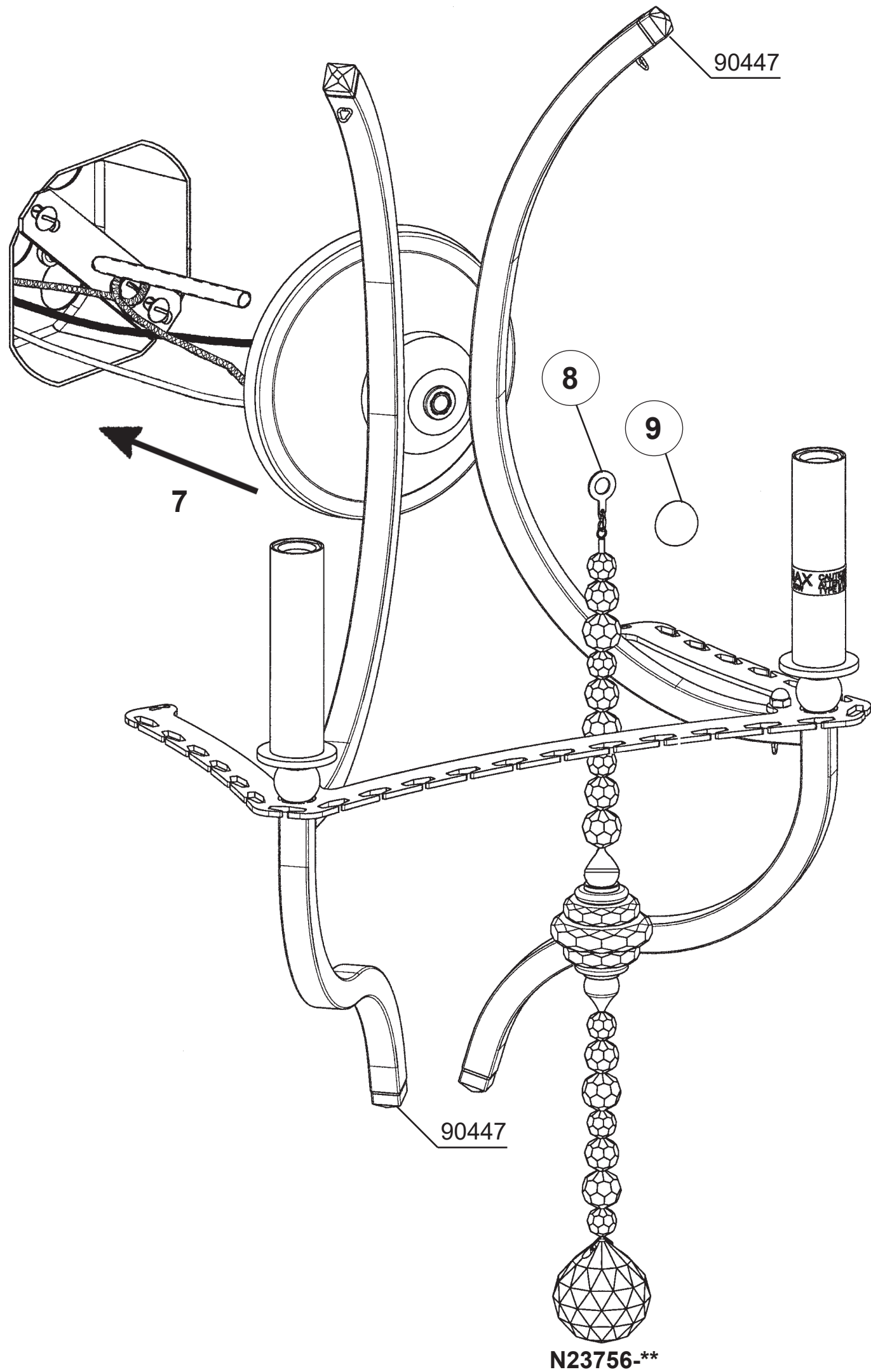
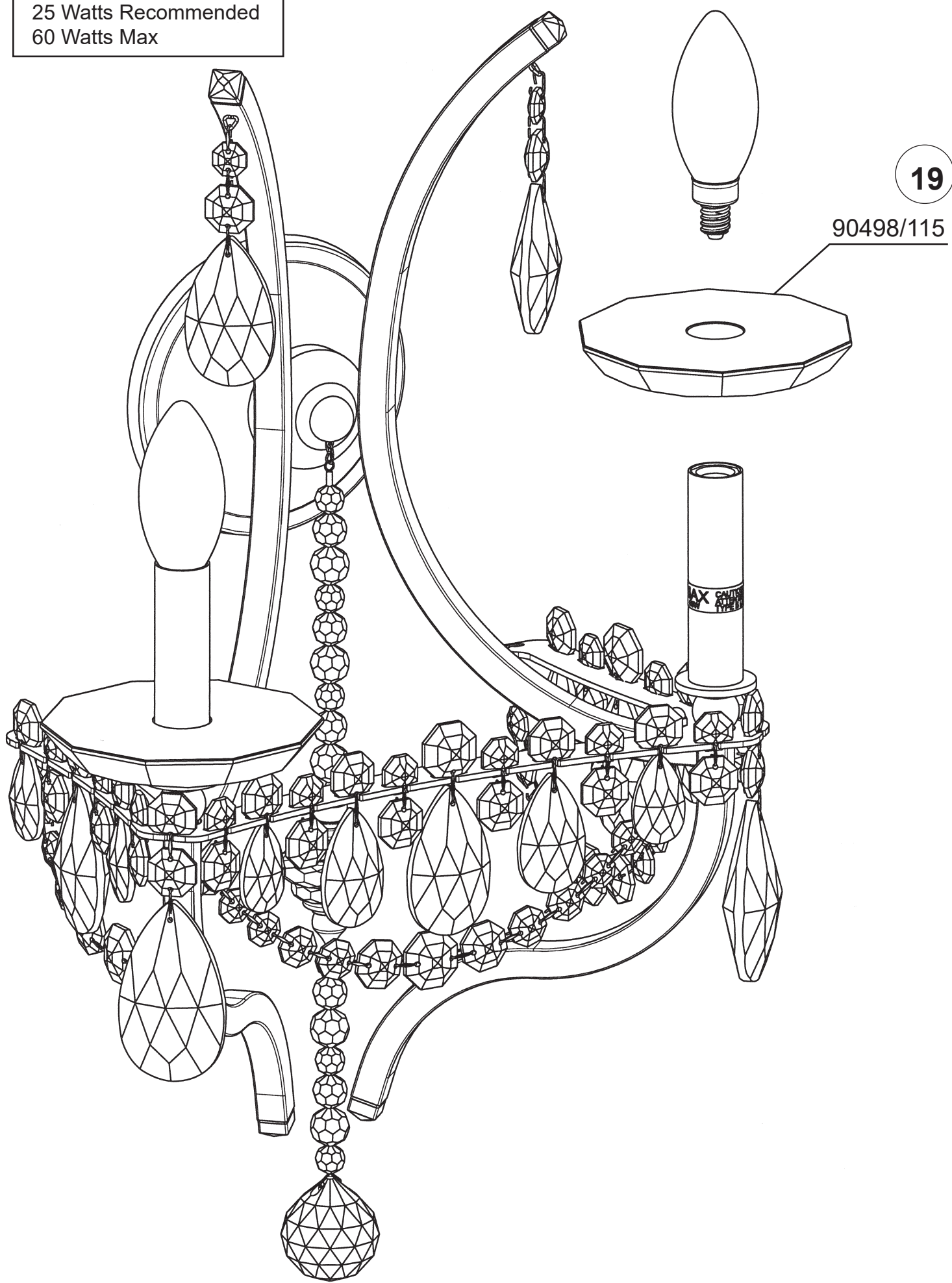
All electrical components must be installed by a licensed electrician in accordance with the National Electric Code and the appropriate local electrical codes.

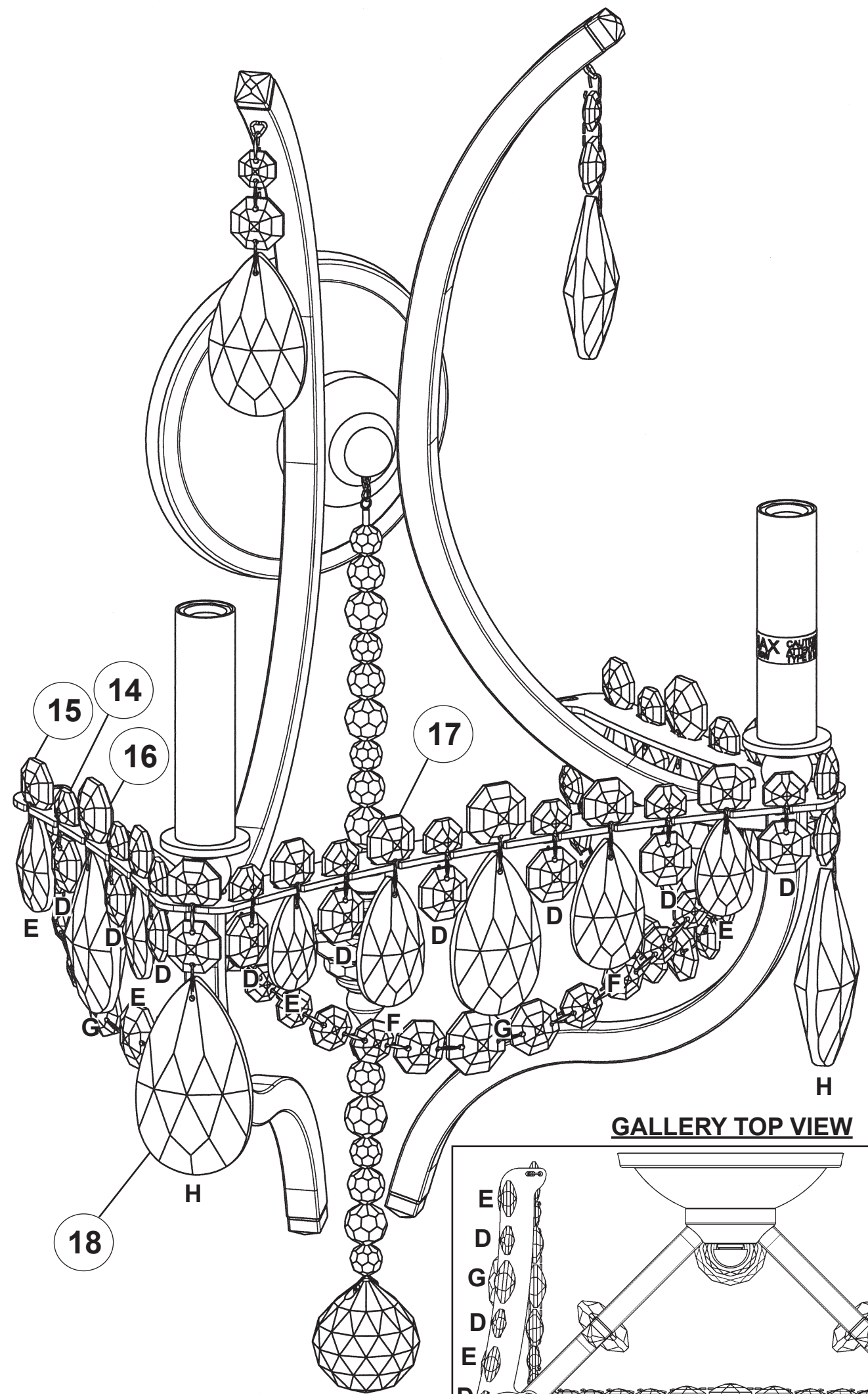
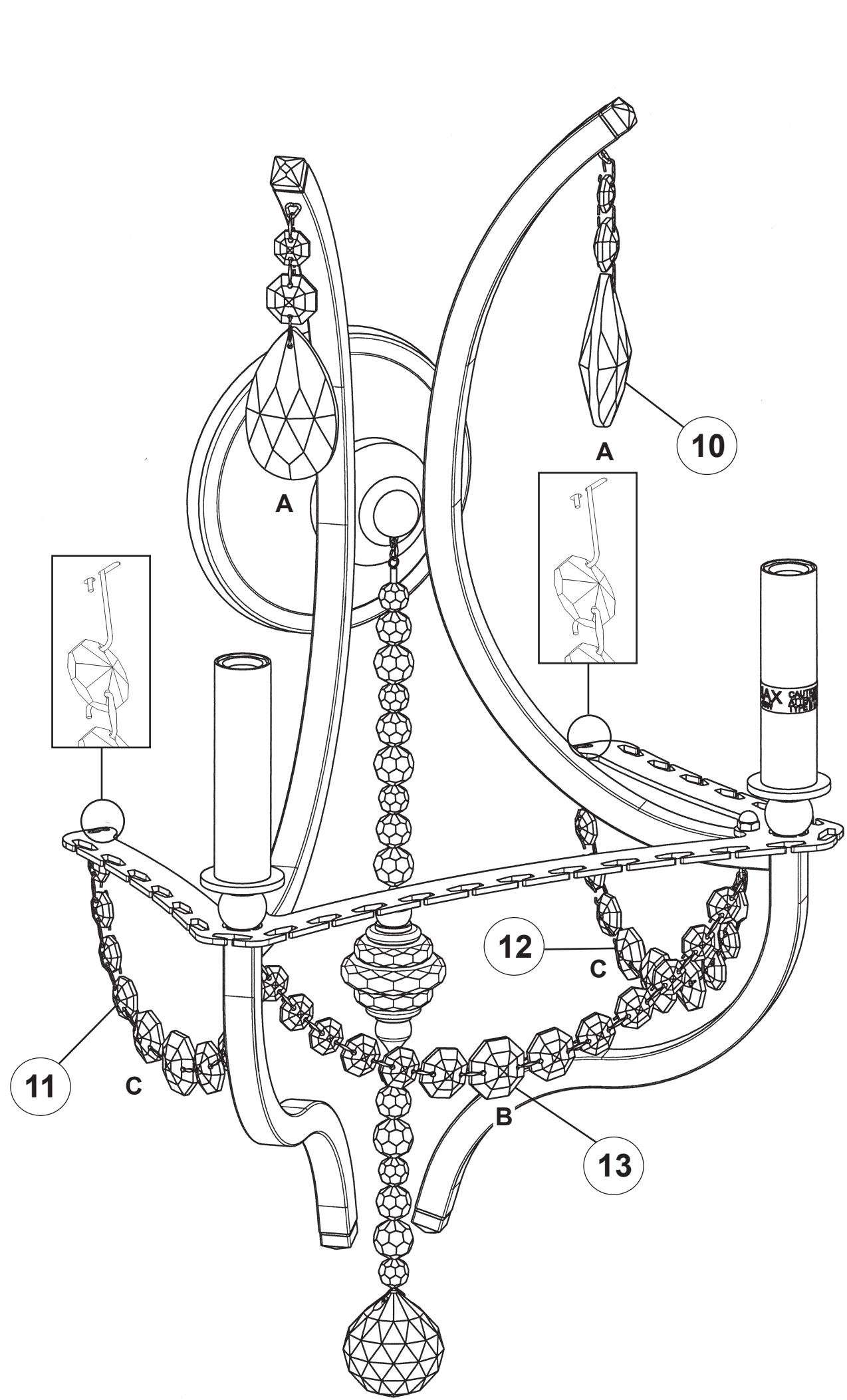


20

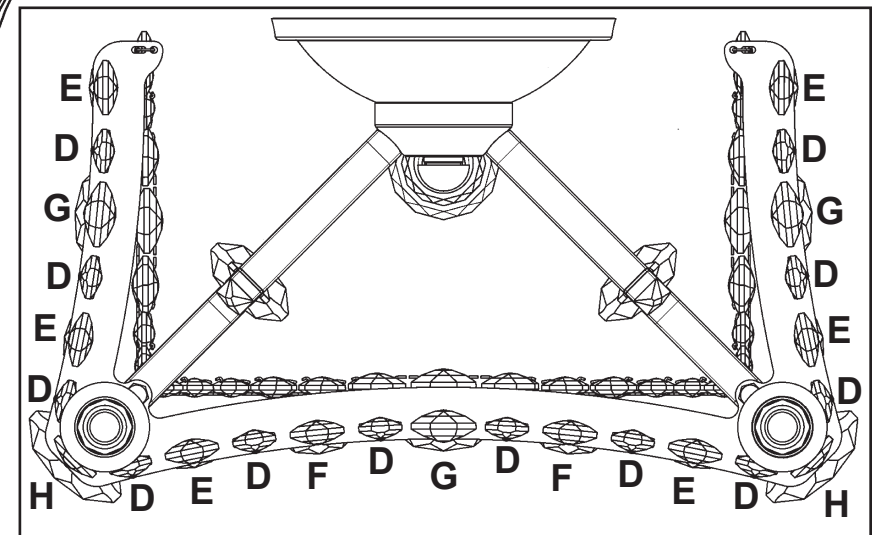


You will need 2 - B10
25 Watts Recommended
60 Watts Max



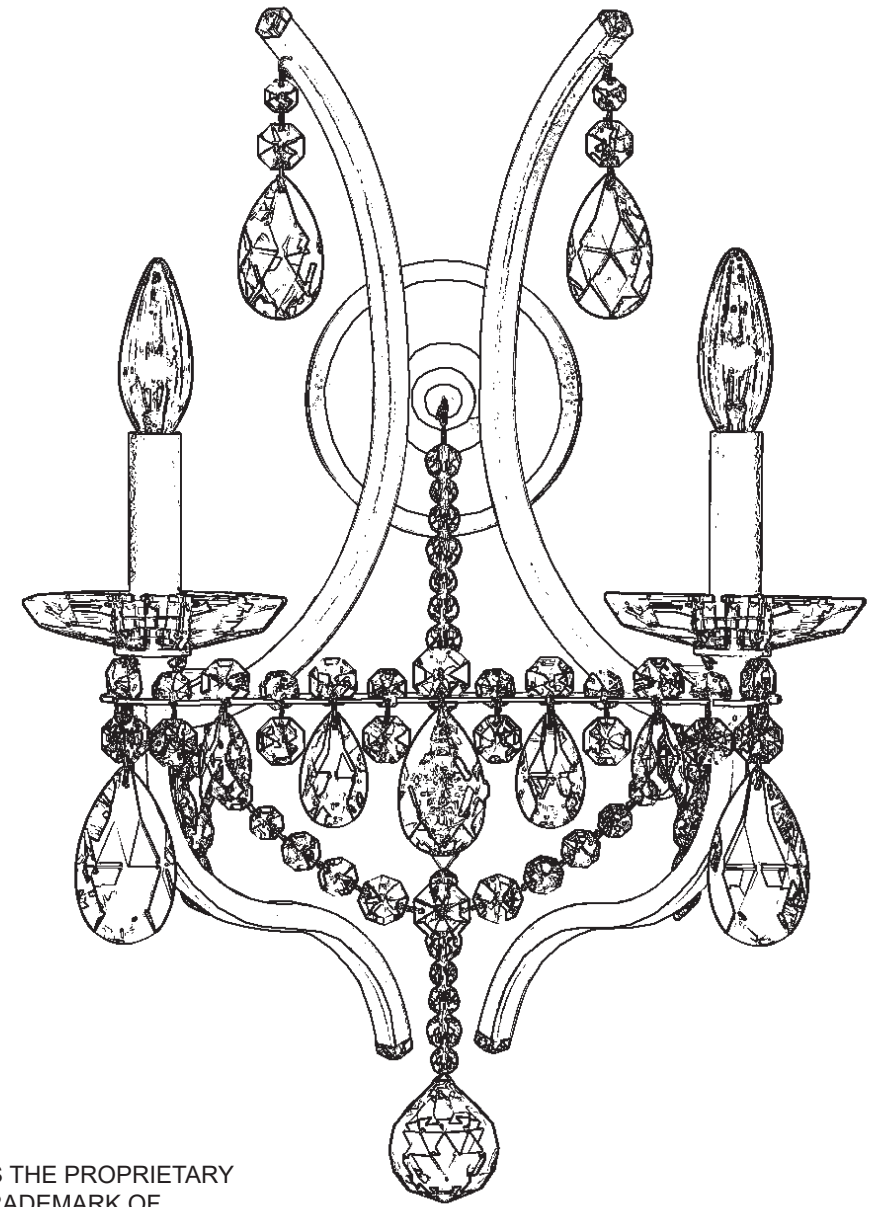


GALLERY TOP VIEW



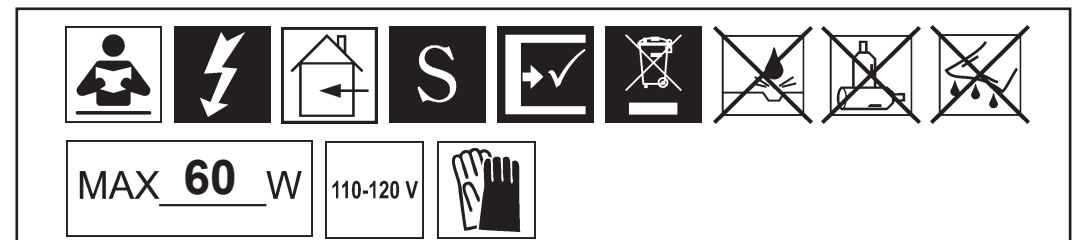
SCHONBEK
Signature[™]

ADLEY
S77502-__R

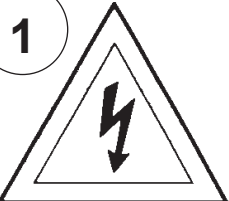
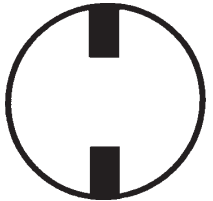


THIS DESIGN IS THE PROPRIETARY
TRADE DRESS/TRADEMARK OF
W SCHONBEK LLC.

SCHONBEK
Signature[™]

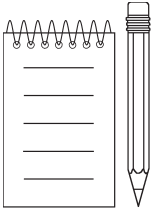
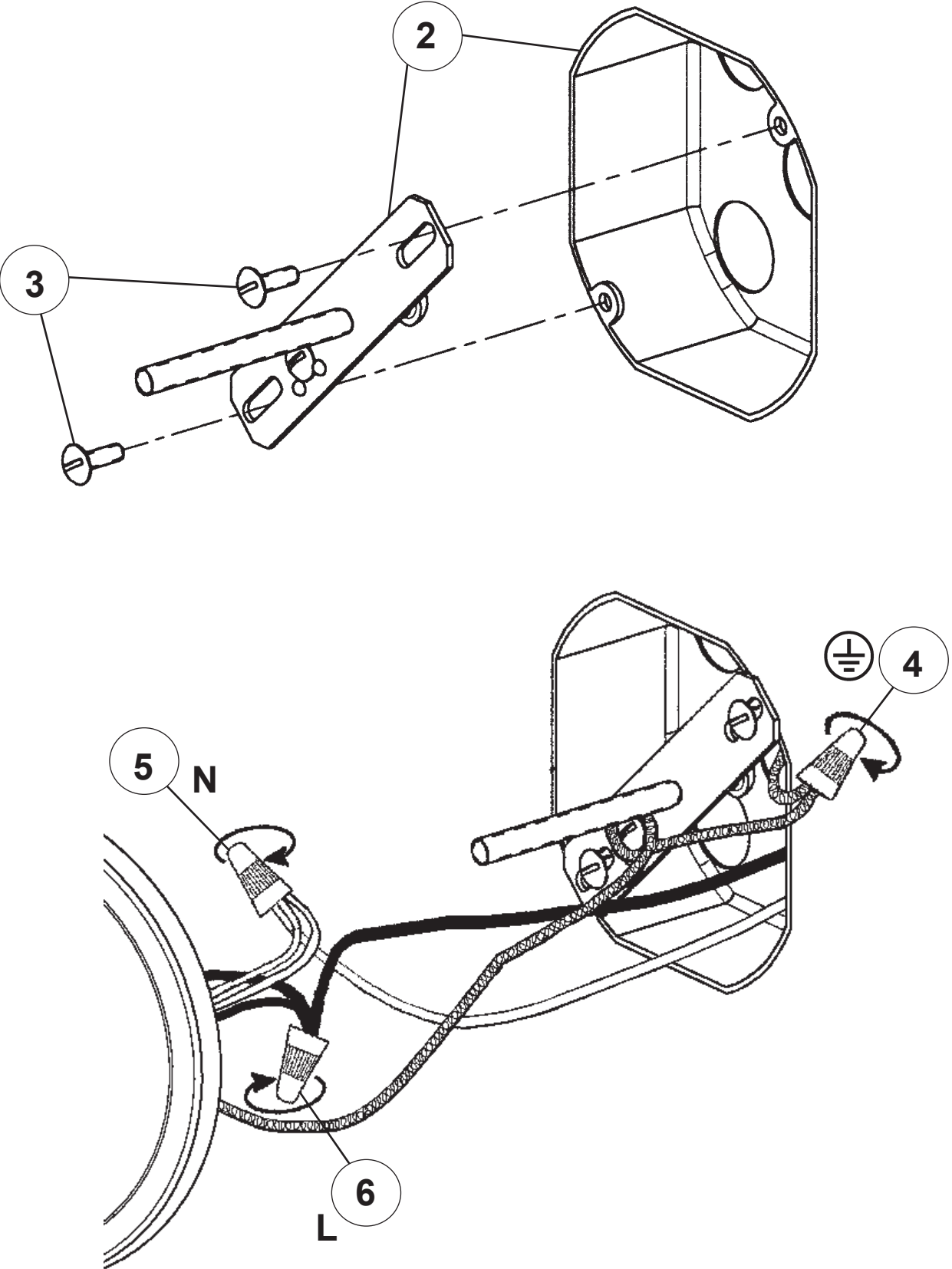


WARNING:

1  

Electrical Danger Turn Power Off

All electrical components must be installed by a licensed electrician in accordance with the National Electric Code and the appropriate local electrical codes.



20



You will need 2 - B10
25 Watts Recommended
60 Watts Max

