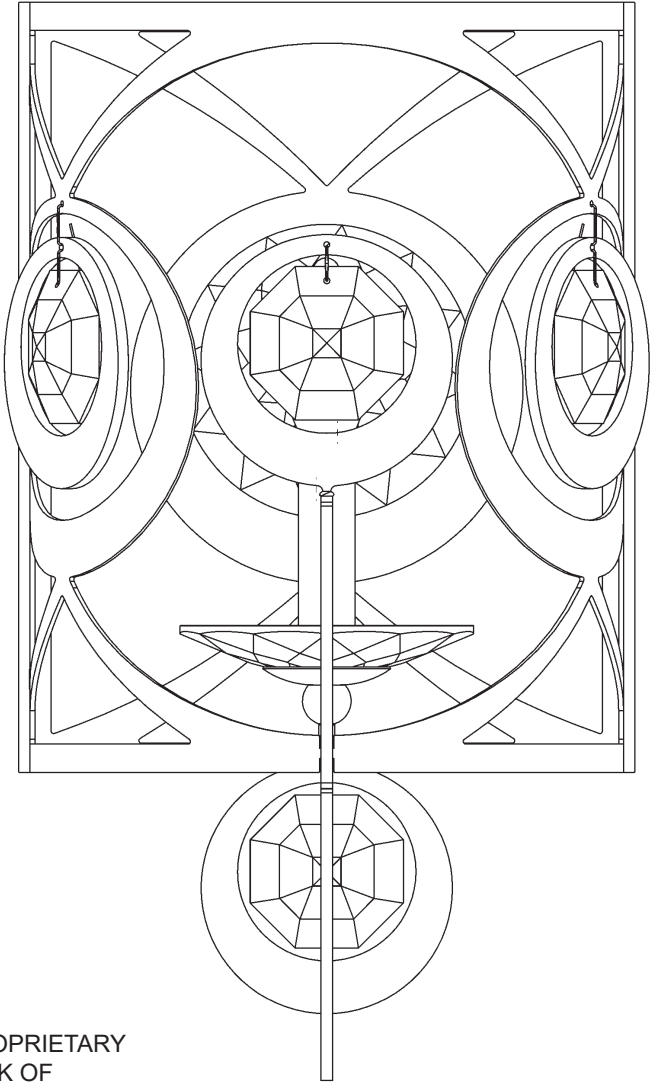


SCHONBEK
*Signature*TM

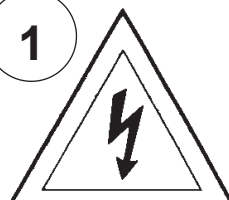


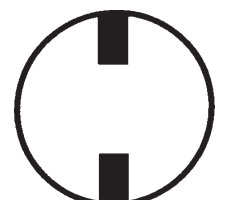
THIS DESIGN IS THE PROPRIETARY
TRADE DRESS/TRADEMARK OF
W SCHONBEK LLC.

SCHONBEK
*Signature*TM

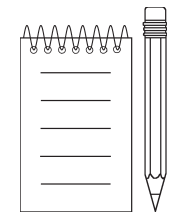
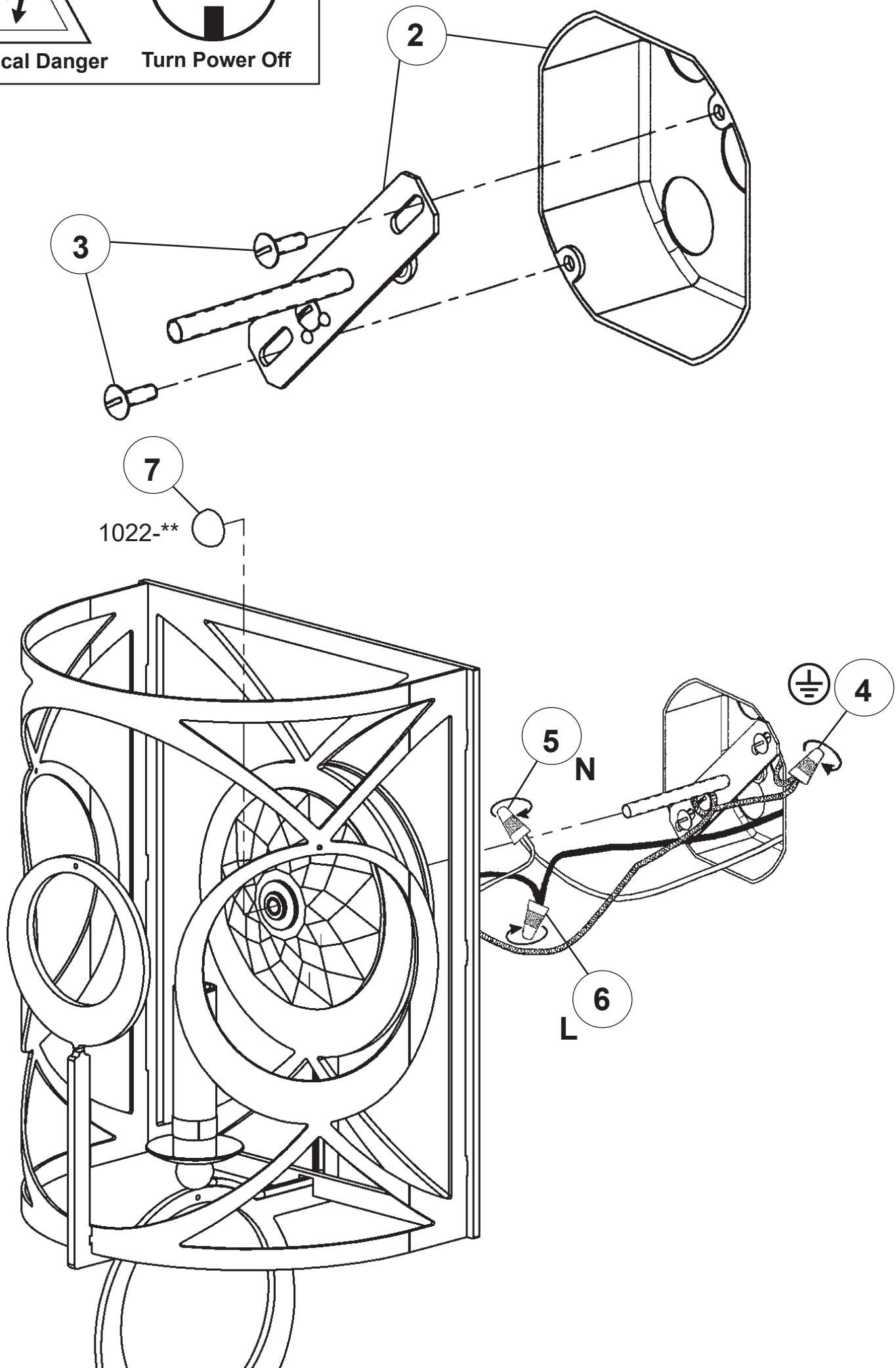
| | | | | | | | | |
|-----------------|--|-----------|--|--|--|--|--|--|
| | | | | | | | | |
| MAX <u>60</u> W | | 110-120 V | | | | | | |

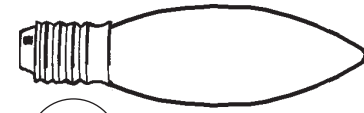
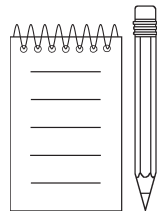
WARNING:

1  **Electrical Danger**

 **Turn Power Off**

All electrical components must be installed by a licensed electrician in accordance with the National Electric Code and the appropriate local electrical codes.





9

You will need 1 - B10
25 Watts Recommended
60 Watts Max

**Install bulbs and be sure
to test fixture BEFORE
trimming.**

