

**WARNING!**



Be sure electrical power is OFF before and during installation or maintenance. The luminaire must be installed by a qualified electrician, in accordance with all applicable local codes.

Ensure that the rated luminaire voltage requirements are compatible with the available mains supply in which it will be installed. All LEDs are included in your lamp. Never touch the LED surface with your bare hands as this may reduce the life of your LED. Do not alter, relocate or remove any electrical component.

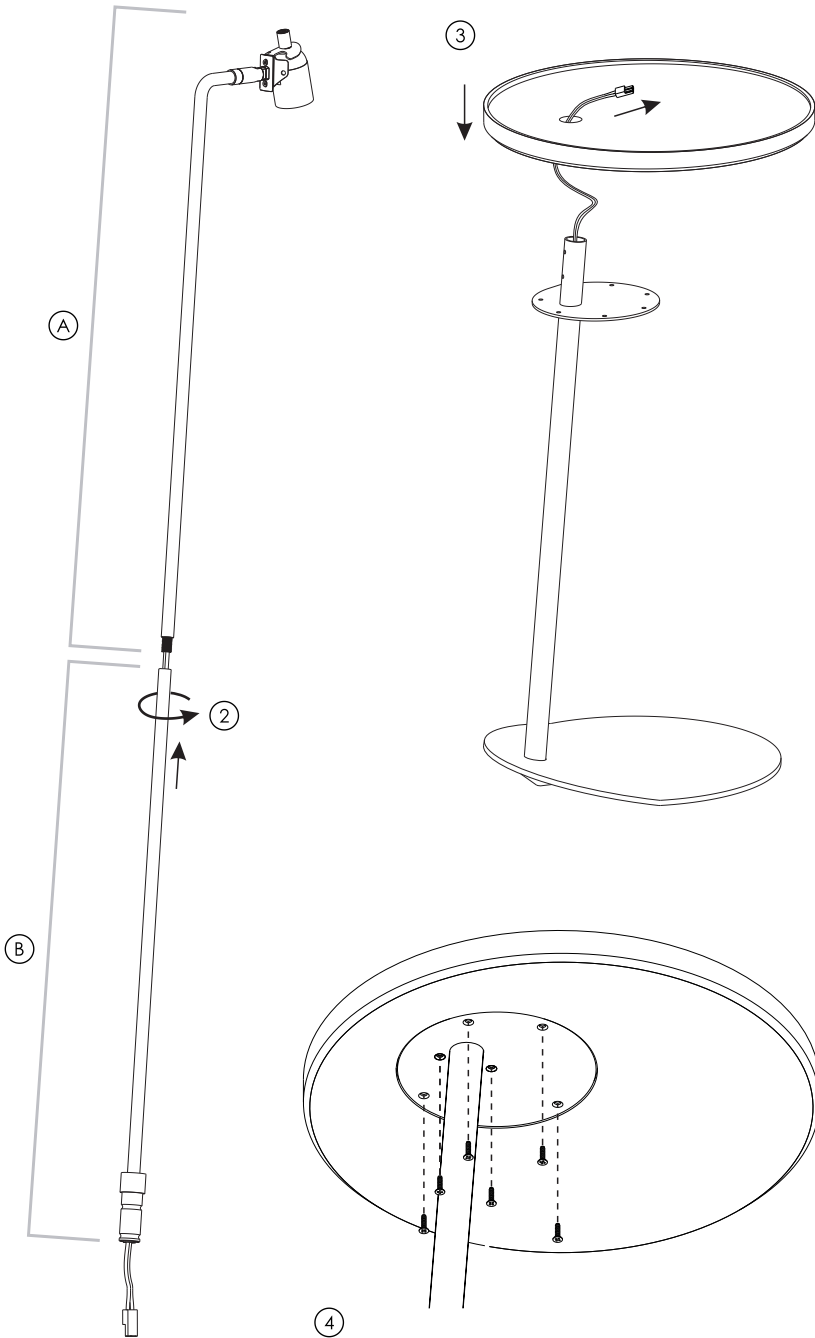
Line: Balance  
Family: Floor Lamp  
Description: Accord Balance Floor 3042

Material: Natural Wood Veneer, MDF and Carbon Steel.  
Weight: 9,30Kg / 20,50lbs

**ASSEMBLING THE FIXTURE**

Read carefully all the Assembly Instructions below, before starting the installation process.

- ① Notice that the metallic stem of the fixture is packed separately and dismantled in two separate parts, which are connected through some excess energy cable. Remove the protecting package from the pieces taking care to not harm any parts with cutting surfaces or objects. Also take special care to not take the two parts (A and B) of the stem too far apart, so the energy cable doesn't rupture. Lay the parts of the fixture on some horizontal surface in order to connect them, if needed use the protecting package to soften the surface and protect the parts from getting scratched or harmed.
- ② Once the protecting packages are removed, connect both parts of the metallic stem: align the superior stem (A) with the lower stem (B) inserting the excess energy cable inside of it. **Rotate only the lower stem (B)** in order to fasten and lock both parts together.
- ③ Assemble the table on the fixture's lower base: pass the energy cable along with the connector (C) through the hole of the table. Fit the table to the metallic lower base, taking care to not press or harm the excess energy cable below. Do not let the energy cable fall inside the inferior stem, as it can become hard to pick it up again.
- ④ Fasten the provided screws (S08) on the metallic base, under the table, in order to lock them together. Use a manual crosstip screwdriver to fasten the screws and do not use excessive strength in order to not harm the threads or the table. Do not use an electric screwdriver for this process.



**ATTENTION!**



FAILURE TO COMPLY WITH THESE INSTRUCTIONS MAY CAUSE ACCIDENTS AND LOSS OF PRODUCT WARRANTY. Its recommended to read these instructions completely and carefully before proceeding.

**SAVE THESE INSTRUCTIONS FOR FUTURE REFERENCE.**

ACCORD Lighting guarantees coverage against manufacturing defects including electrical components and finishes, for a period of three years, under normal use, from the date of purchase. For warranty service, please contact your local dealer for further instructions. Proof of date of purchase will be required for validation of warranty service.

The responsibility of the manufacturer regarding the product warranty is related to the correct observation of the instructions contained in this manual. The manufacturer is not responsible for any damage to the product caused by accidents, alterations of any kind, improper usage or improper installation. See the website for additional warranty details.

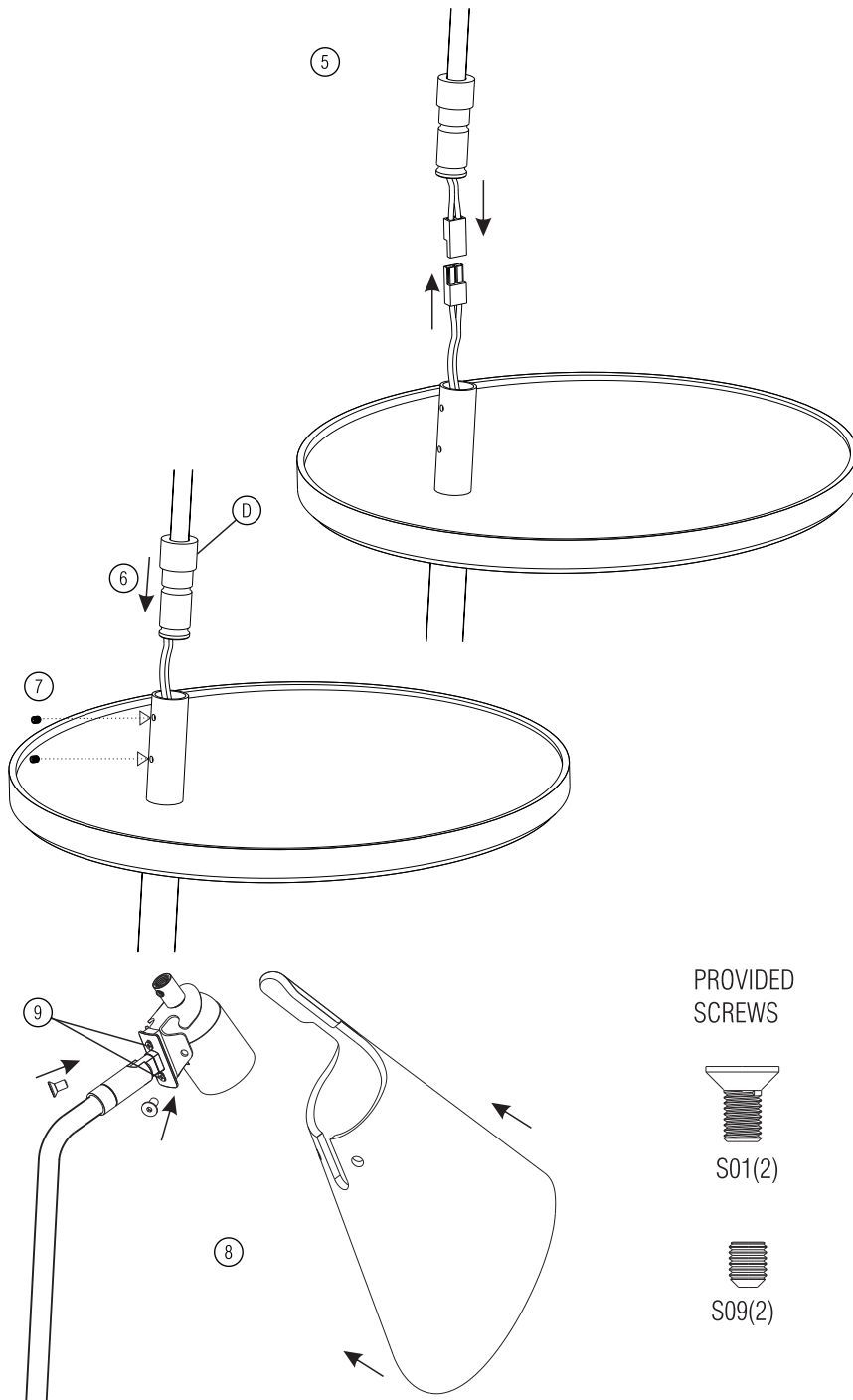
ACCORD Lighting reserves the right to change the dimensions and specifications contained in this manual without prior notice, in accordance with its policy of continuous product improvement. Please, contact the manufacturer if additional information is necessary. The illustrations in this manual are for guidance only and may vary in scale, dimensions and model details.

**WARNING!**



Be sure electrical power is OFF before and during installation or maintenance. The luminaire must be installed by a qualified electrician, in accordance with all applicable local codes.

Ensure that the rated luminaire voltage requirements are compatible with the available mains supply in which it will be installed. All LEDs are included in your lamp. Never touch the LED surface with your bare hands as this may reduce the life of your LED. Do not alter, relocate or remove any electrical component.



Line: Balance  
Family: Floor Lamp  
Description: Accord Balance Floor 3042

Material: Natural Wood Veneer, MDF and Carbon Steel.  
Weight: 9,30Kg / 20,50lbs

- ⑤ Once the table is assembled, the superior metallic stem must be connected to the lower part of the fixture. Start joining the connectors pressing them together until you hear a "click".
- ⑥ Insert the connectors along with the excess energy cable inside the lower stem, followed by the metallic dowell (D) at the tip of the stem.
- ⑦ With the superior metallic stem joined to the lower stem, align it according to the fixture shape on a way it's final position is symmetric, then, fasten the provided screws (S09) to lock the superior stem in place.
- ⑧ With the overall structure of the fixture assembled, join the wooden dome to the metallic support. Fit the dome to the metallic support through it's superior opening, aligning the holes and fastening the provided screws (S01) to lock the dome in place.
- ⑨ Finish the fastening of the crosstip screws located on the swivel joints base, in order to keep it tight.

Once the dome is completely assembled and tight in place, the fixture is ready to use.

**USER GUIDE**

Plug the fixture in a proper outlet, using the floor switch to turn the fixture ON/OFF.

The wooden dome which houses the light source is articulated. Hold the dome and rotate it in order to direct the light to the desired spot. Be careful to not exceed the swivel joint's articulation limit so it doesn't break.

The integrated table must not hold more than 2 Kg (4,4 lbs) in order to guarantee it's stability. Take care to not harm or scratch the tabletop surface with cutting or wet objects, as it's finish is a natural wood veneer or a lacquer paint.

It is recommended to use a mini LED bulb (E26-A15) in this fixture. Due to the dome size a regular bulb size would come out of the dome causing excessive light glare.

**PROVIDED SCREWS**



S01(2)



S09(2)



S08(7)

**ATTENTION!**



FAILURE TO COMPLY WITH THESE INSTRUCTIONS MAY CAUSE ACCIDENTS AND LOSS OF PRODUCT WARRANTY. Its recommended to read these instructions completely and carefully before proceeding.

**SAVE THESE INSTRUCTIONS FOR FUTURE REFERENCE.**

ACCORD Lighting guarantees coverage against manufacturing defects including electrical components and finishes, for a period of three years, under normal use, from the date of purchase. For warranty service, please contact your local dealer for further instructions. Proof of date of purchase will be required for validation of warranty service.

The responsibility of the manufacturer regarding the product warranty is related to the correct observation of the instructions contained in this manual. The manufacturer is not responsible for any damage to the product caused by accidents, alterations of any kind, improper usage or improper installation. See the website for additional warranty details.

ACCORD Lighting reserves the right to change the dimensions and specifications contained in this manual without prior notice, in accordance with its policy of continuous product improvement. Please, contact the manufacturer if additional information is necessary. The illustrations in this manual are for guidance only and may vary in scale, dimensions and model details.