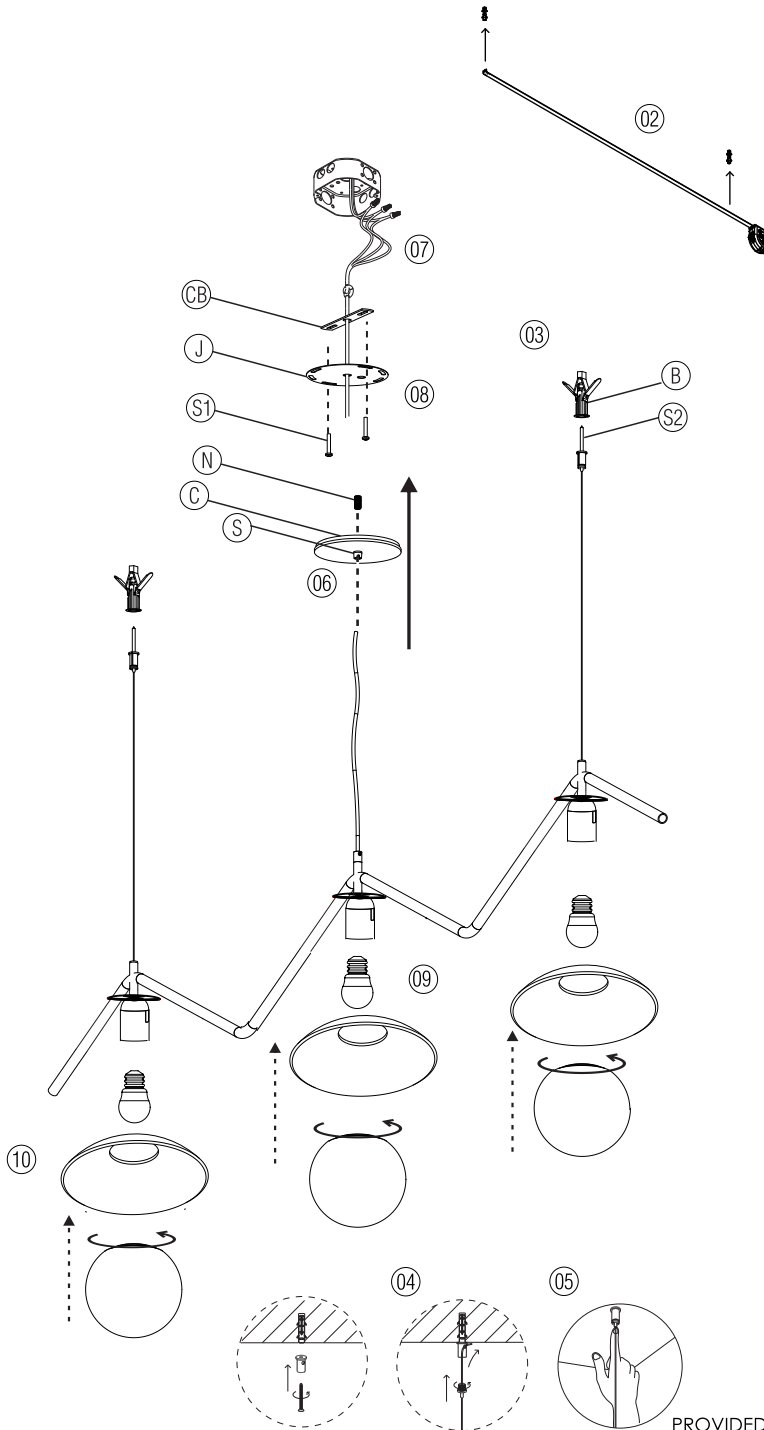


**WARNING!**



Be sure electrical power is OFF before and during installation or maintenance. The luminaire must be installed by a qualified electrician, in accordance with all applicable local codes.

Ensure that the rated luminaire voltage requirements are compatible with the available mains supply in which it will be installed. All LEDs are included in your lamp. Never touch the LED surface with your bare hands as this may reduce the life of your LED. Do not alter, relocate or remove any electrical component.



Line: Oyster  
Family: Pendant  
Description: Oyster Accord Pendant 1516

ø8mm /  
ø5/16"

Input voltage: 120 - 240V  
Input frequency: 60Hz

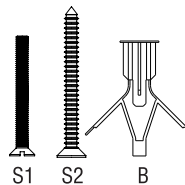
Material: Natural Wood Vener and MDF.

Read carefully all the assembling instructions below and turn OFF energy power before starting the installation.

Turn off the electrical power before starting the installation, and keep it turned off until the installation is completed.

- 01 Remove the protective packaging from the parts, being careful not to damage any parts with sharp surfaces or objects. Arrange the luminaire parts on a horizontal surface, if necessary, use protective packaging to smooth the support surface and protect the parts against scratches or damage.
- 02 Once the packaging has been removed, make markings on the ceiling where the holes will be made to install the cable locks.
- 03 With the marking made, drill the hole using an 8mm drill and insert the plastic bushing provided.
- 04 Then, fix the upper part of the cable lock using the screws (S2) and pass the metal cables through the lower part of the cable locks, threading them into the upper part, fixed to the ceiling. Excess cable must come out of the side of the cable lock.
- 05 Adjust the height and level of the pendant by pressing the lower end of the cable lock. Then, either wrap or cut the excess metal cable. If you choose to cut the metal cables, note that height adjustments will become limited.
- 06 Pass the power supply cable through the strain relief (S), threaded tube nipple (N), canopy (C), junction box cover (J) and crossbar (CB). Adjust the cable length so it is equivalent to the desired height for the luminaire to be installed.
- 07 Make the electrical connections in compliance with all the safety standards and local electrical codes. This product must be installed in accordance with the applicable installation code by a person familiar with the construction and operation of the product, and the hazards involved.
- 08 Screw the mounting bar to the junction box or the ceiling outlet using the provided screws (S1). Next, secure the canopy to the ceiling by threading the grommet onto the nipple and then threading the nipple into the mounting bar.
- 09 Install a E-26 A-15 LED bulb with a maximum power of 25W.
- 10 After installing the lamps, fit the wooden shade into the metal support. Hold it while screwing the globe diffuser into the support, and carefully position the wooden shade on top of the globe. Repeat it to the other supports as well.

PROVIDED SCREWS



**ATTENTION!**



FAILURE TO COMPLY WITH THESE INSTRUCTIONS MAY CAUSE ACCIDENTS AND LOSS OF PRODUCT WARRANTY. Its recommended to read these instructions completely and carefully before proceeding.

SAVE THESE INSTRUCTIONS FOR FUTURE REFERENCE.

ACCORD Lighting guarantees coverage against manufacturing defects including electrical components and finishes, for a period of three years, under normal use, from the date of purchase. For warranty service, please contact your local dealer for further instructions. Proof of date of purchase will be required for validation of warranty service.

The responsibility of the manufacturer regarding the product warranty is related to the correct observation of the instructions contained in this manual. The manufacturer is not responsible for any damage to the product caused by accidents, alterations of any kind, improper usage or improper installation. See the website for additional warranty details.

ACCORD Lighting reserves the right to change the dimensions and specifications contained in this manual without prior notice, in accordance with its policy of continuous product improvement. Please, contact the manufacturer if additional information is necessary. The illustrations in this manual are for guidance only and may vary in scale, dimensions and model details.

Turn on the power. The luminaire is ready for use.