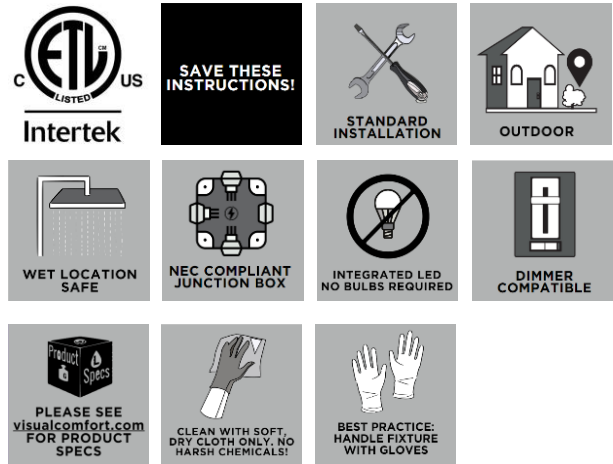


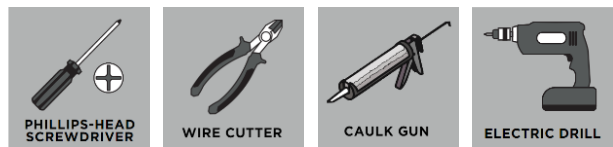
# KUKEI OUTDOOR SMALL & LARGE WALLS

SLO1281; SLO1291

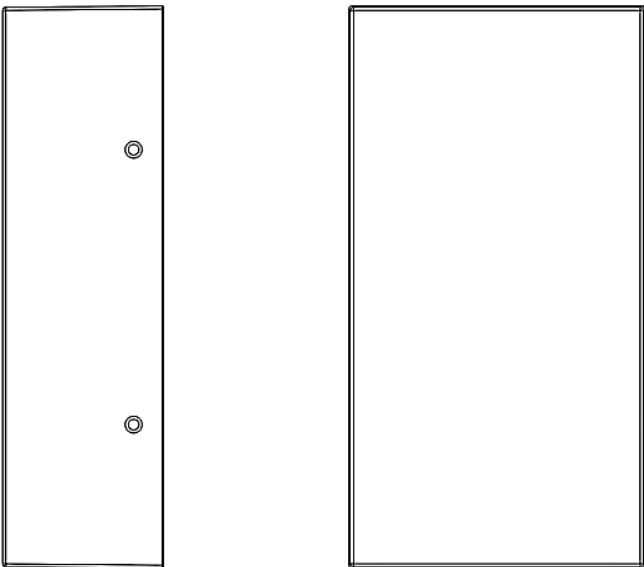
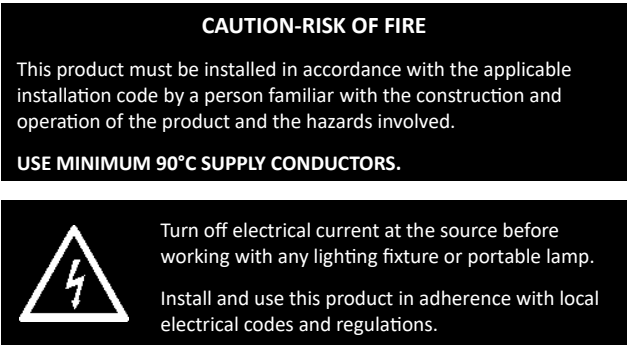
## General Product Information



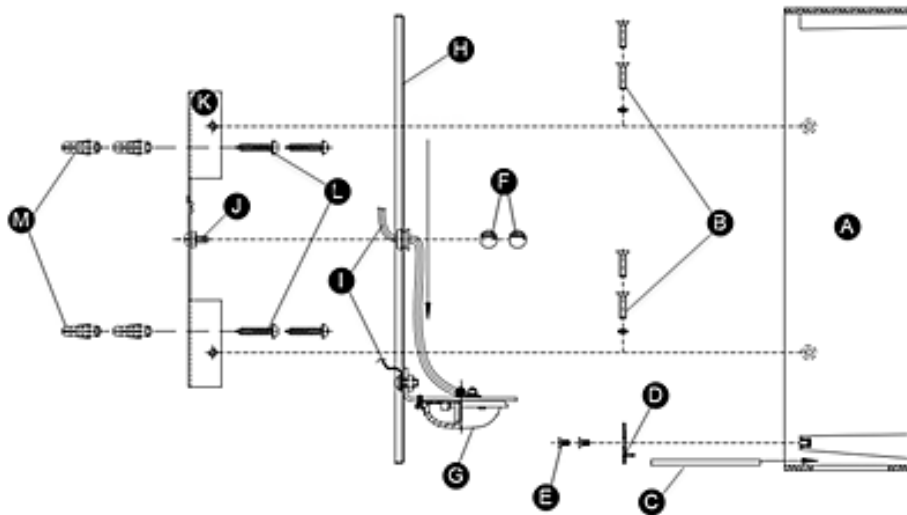
## Tools Required



## Safety Information



## FIXTURE PARTS



- A. Fixture Shade
- B. Shade Screws
- C. Glass
- D. Glass Bracket
- E. Glass Bracket Screws
- F. Cap Nuts
- G. LED
- H. Fixture
- I. Fixture Wires
- J. Mounting Studs
- K. Mounting Plate
- L. Anchor Screws
- M. Anchors

## INSTRUCTIONS

### I. Preparing the Fixture

1. Separate the mounting plate from the fixture base.
2. Install the anchors as follows:
  - a) Place the mounting plate on the junction box to trace and mark the locations for the anchor holes. Ensure that they are level.
  - b) Use an electric drill to drill the marked holes.
  - c) Insert the anchors into the holes.
3. Secure the mounting plate to the junction box with the mounting screws. Further secure it with the anchor screws.

### II. Wiring the Fixture

1. Safety first! Locate the circuit breaker and switch it off to cut off the power supply to the relevant circuits to ensure there's no electricity running through the wiring.
2. In accordance with local electrical codes, connect the fixture ground wire (bare copper or silver wire) to suitable ground. This may be a green ground screw on the mounting plate, which the ground wire should be tightly wrapped around or a house wire (green or bare copper wire without insulation).
3. Twist the bare ends of the following pairs of wires together using a wire nut to secure a connection:
  - a) Hot fixture wire (black) and hot power line wire from the junction box (hot to hot)
  - b) Neutral fixture wire (white) and neutral power line wire from the junction box (neutral to neutral)
4. Carefully tuck all the wires into the junction box.

### III. Installing the Fixture

1. Mount the fixture onto the mounting plate and secure it in place by installing the provided cap nuts onto the mounting studs.
2. Slide the glass into the bottom of the shade. Insert the glass bracket and secure it with the glass bracket screws.
3. Place the shade onto the assembled mounting plate and fixture. Aligning the holes on the sides of the mounting plate with the holes on the sides of the shade, secure them together with the provided shade screws.
4. For wet locations, caulk around the base of the fixture with waterproof construction sealant.