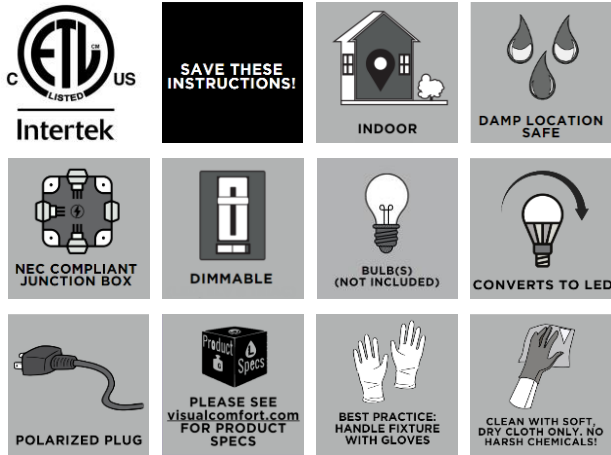


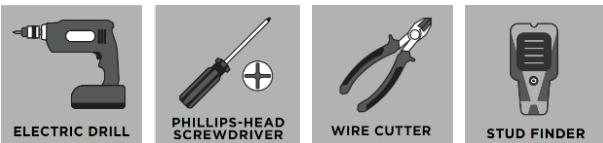
FRASAR SMALL, MEDIUM & LARGE SCONCES

DJW1121; DJW1131; DJW1141

General Product Information



Suggested/Required Tools



Safety Information

CAUTION-RISK OF FIRE

This product must be installed in accordance with the applicable installation code by a person familiar with the construction and operation of the product and the hazards involved.

USE MINIMUM 90°C SUPPLY CONDUCTORS.

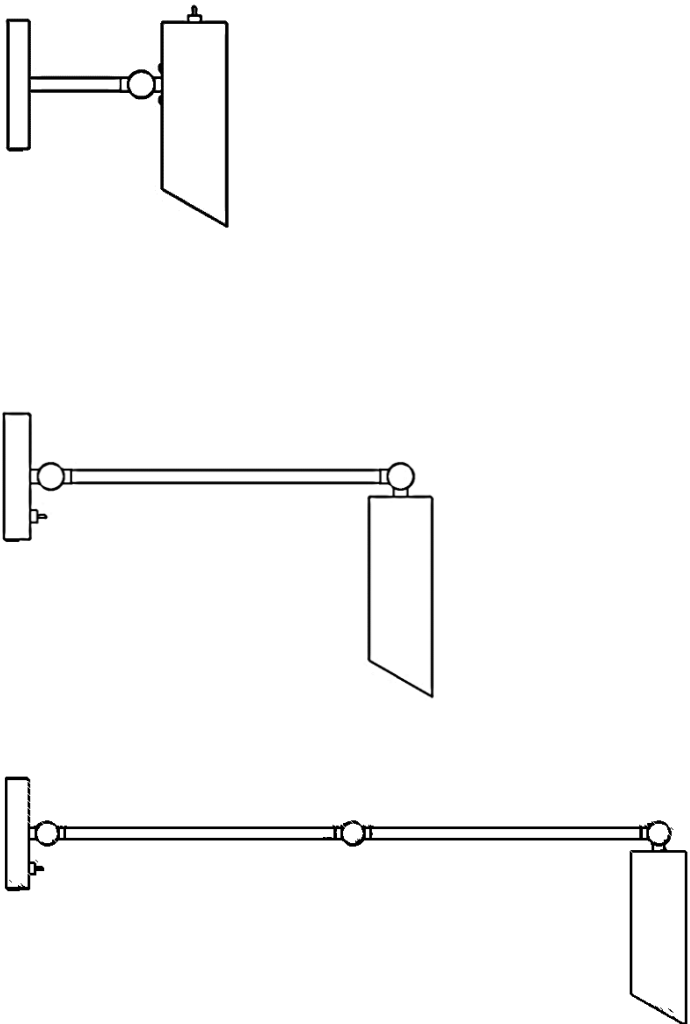
IMPORTANT SAFETY INSTRUCTIONS

This portable lamp has a polarized plug (one blade is wider than the other) as a safety feature to reduce the risk of electric shock. This plug will fit in a polarized outlet only one way. If the plug does not fit fully in the outlet, reverse the plug. If it still does not fit, contact a qualified electrician. Never use with an extension cord unless plug can be fully inserted. Do not attempt to defeat this safety feature.



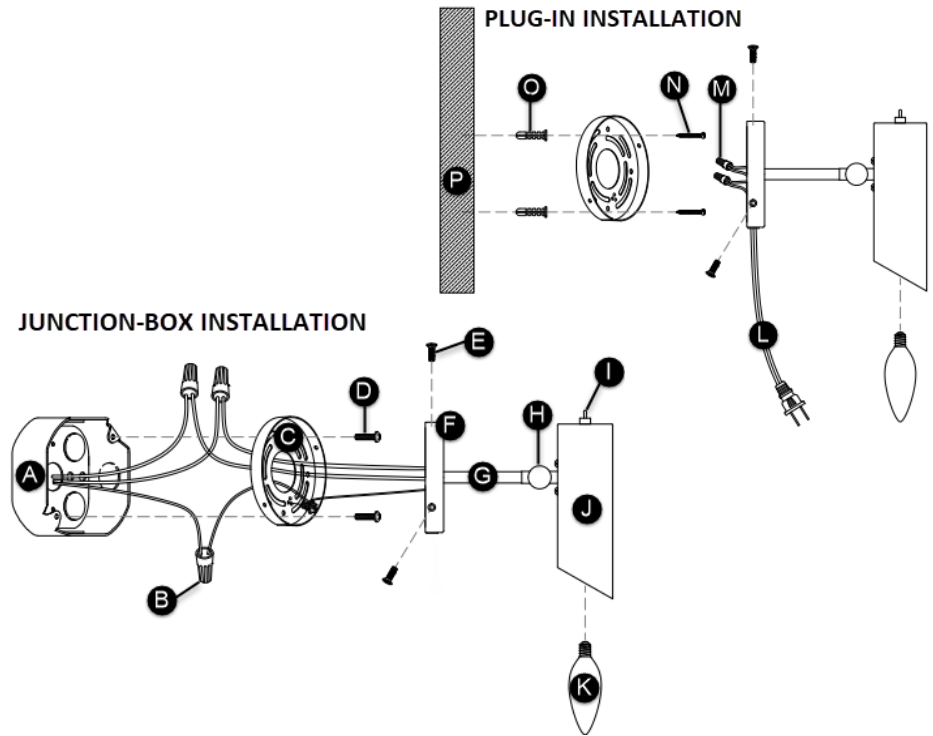
Turn off electrical current at the source before working with any lighting fixture or portable lamp.

Install and use this product in adherence with local electrical codes and regulations.



## FIXTURE PARTS

- A. Junction box
- B. Junction Box & Fixture Wire Nut Connections
- C. Mounting Plate
- D. Mounting Screws
- E. Fixture Screws
- F. Base Plate/Fixture Base
- G. Fixture Arm
- H. Ball Joint
- I. Light Switch (located at front of fixture base for medium + large models)
- J. Spun Shade
- K. Bulb (not included)
- L. Power Cord with Polarized Plug
- M. Power Cord & Fixture Wire Nut Connections
- N. Anchor Screws
- O. Anchors
- P. Wall



## INSTRUCTIONS

### Junction Box Mounting

#### I. Preparing the Fixture

1. Separate the mounting plate from the base plate by removing the fixture screws.
2. Install the mounting plate to the junction box with the mounting screws.

#### II. Wiring the Fixture

1. Safety first! Locate the circuit breaker and switch it off to cut off the power supply to the relevant circuits to ensure there's no electricity running through the wiring.
2. Disconnect the cord from the fixture wires by removing the wire nuts.
3. Carefully pull the cord out of the fixture.
4. Close the cord hole using the provided fixture plug.
5. In accordance with local electrical codes, connect the fixture ground wire (bare copper or silver wire) to suitable ground. This may be a green ground screw on the mounting plate, which the ground wire should be tightly wrapped around or a house wire (green or bare copper wire without insulation).
6. Twist the bare ends of the following pairs of wires together using a wire nut to secure a connection:
  - a) Hot fixture wire (black) and hot power line wire
  - b) Neutral fixture wire (white) and neutral power line wire
7. Tuck all the wires behind the mounting plate into the junction box.

#### III. Installing the Fixture

1. Mount the base of the fixture onto the mounting plate and secure it in place with the fixture screws.
2. Screw the bulb into the socket. Refer to socket label for max wattage information.
3. Turn the power back on and switch the fixture on/off to test functioning.
4. Adjust the fixture arm to the desired position.

### or Plug-In Cord Mounting

#### I. Preparing the Fixture

1. Separate the mounting plate from the base plate by removing the fixture screws.
2. Select a desired location on the wall close to an electrical outlet and mark it for installation. (Tip: Use a stud finder to check for studs.)
3. Using a drill and the provided anchors and anchor screws, install the mounting plate directly onto the wall.
4. Attach the power cord assembly to the hole at bottom of the base plate.

#### II. Wiring the Fixture to Power Cord

1. The power cord is packaged unattached. Attach it to the fixture by feeding it through the hole at the bottom of the base plate.
2. Twist the bare ends of the following pairs of wires together using a wire nut to secure an electrical connection to the power cord:
  - a) Hot fixture wire (black) and hot power cord wire (smooth)
  - b) Neutral fixture wire (white) and neutral power cord wire (textured/ribbed)
  - c) Tuck all the wires into the mounting plate.

#### III. Installing the Fixture

1. Mount the base of the fixture onto the mounting plate and secure it in place with the fixture screws.
2. Screw the bulb into the socket. Refer to socket label for max wattage information.
3. Plug the cord into a nearby electrical outlet and use the on/off switch to test functioning.
4. Adjust the fixture arm to the desired position.