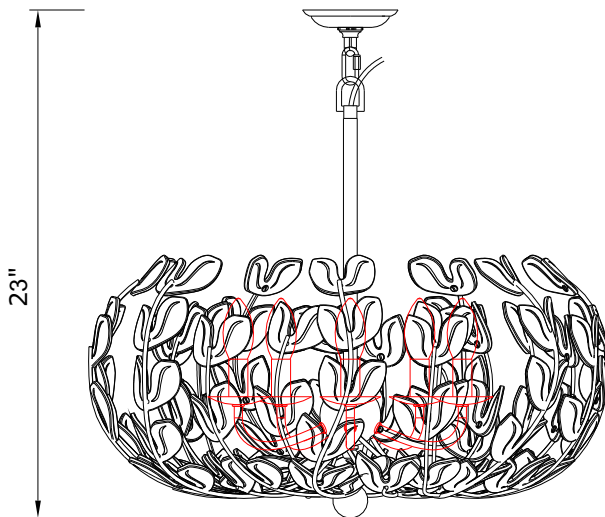
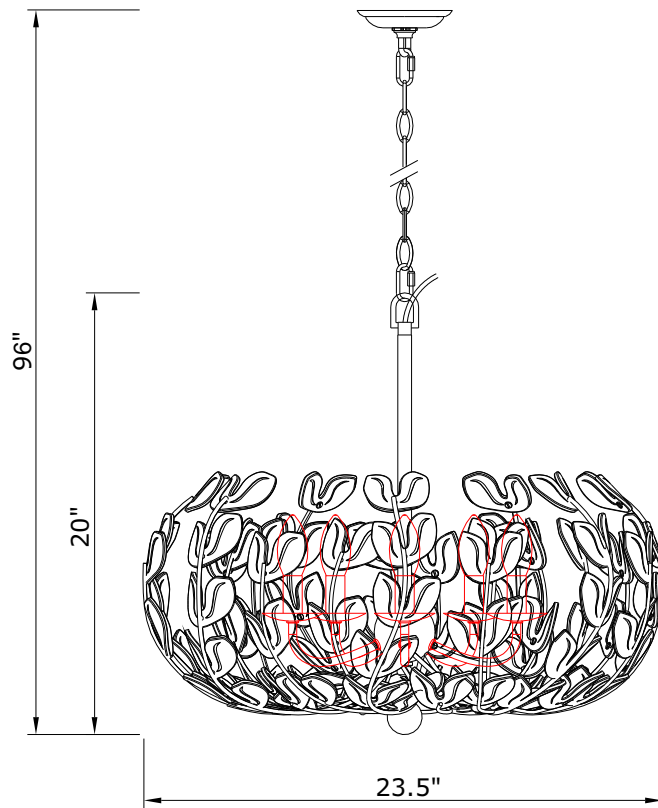


CRYSTORAMA LIGHTING

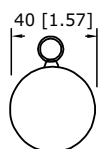


Crystorama.com

ASSEMBLY INSTRUCTION MODEL # BGT-336-SG-GR



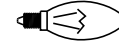
GLASS LEAVES A=91PCS



GLASS Ball =1PC



All electrical components must be installed by a licensed electrician in accordance with the National Electric Code and the appropriate local electrical codes.



You will need 5 -Candelabra Base Bulb
40 Watts Recommended 60 Watts Max.
USE LED BULBS FOR EXTENDED USE
THIS FIXTURE IS DAMP RATED

How to Install

1. Screw the center stem kit onto the light cluster.
2. Place the frame on the foam block used for packaging. Ensure the foam block is covered with the pearl wrap to prevent the frame from being scratched during the installation of the glass leaves. See the illustration on the next page.
3. Starting at the bottom of the frame, install the glass leaves onto the frame using a screwdriver, as shown in the illustration. Do not overtighten the screws, as this may cause the glass to crack or break.
4. Insert recommended bulb(not included) onto the socket.
5. Decide the preferred hanging height and choose the correct length of chain needed.
6. Install the mounting bracket onto the outlet box.
7. Raise the fixture up over the outlet box and do the wire connection. Secure the canopy and glass dish onto the mounting bracket using the collar ring.
8. Hang the glass ball onto the bottom of the frame.

WARNING: This product can expose you to Lead, which is known to the State of California to cause cancer and/or birth defects or reproductive harm. For more information go to www.P65Warnings.ca.gov.

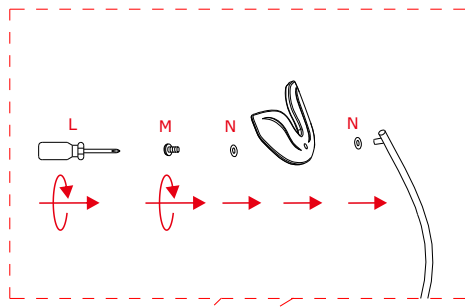
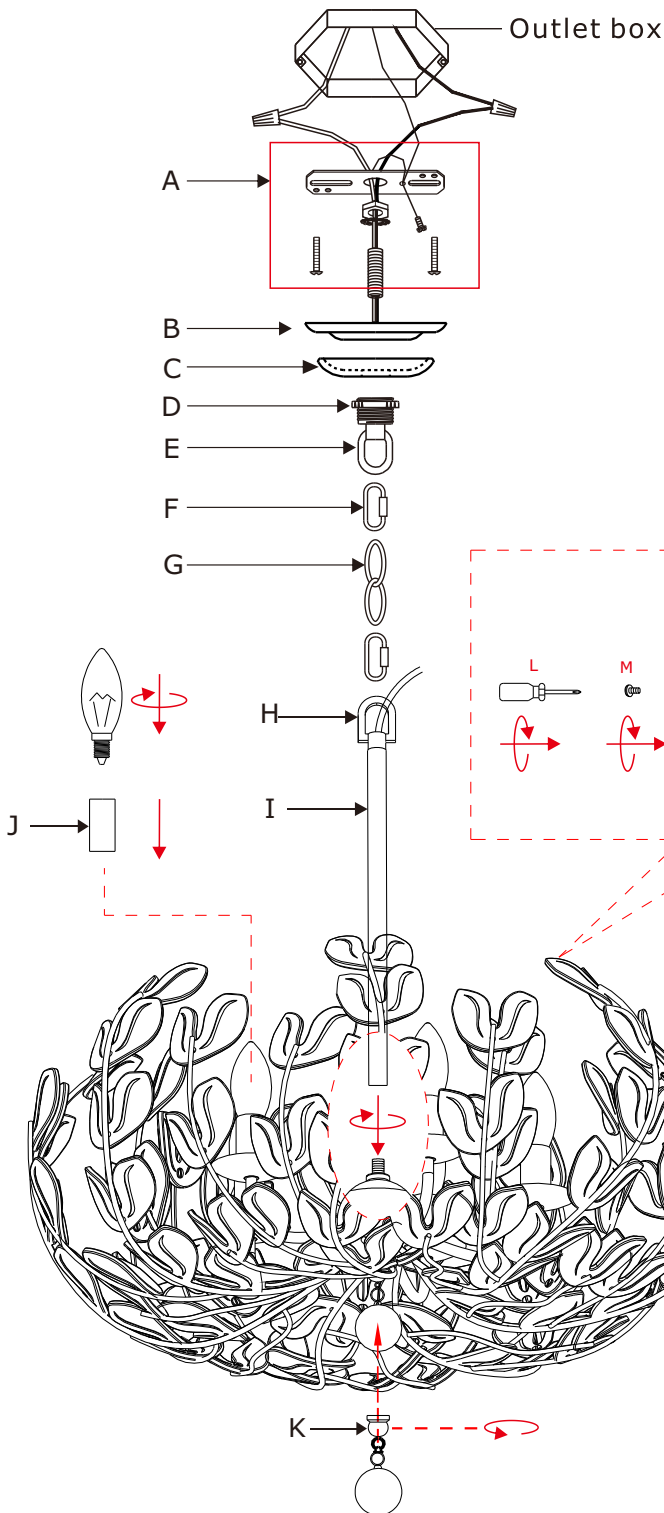
CRYSTORAMA LIGHTING



PART NUMBER MODEL # BGT-336-SG-GR

Part Number

- A. (1) - Mounting Hardware
- B. (1) - Canopy(W4.5",H0,75") #XREBGT330SGGRCAN4.5IN
- C. (1) - Glass Dish(W3.5",H0.76")
- D. (1) - Collar Ring
- E. (1) - Collar Loop
- F. (2) - Quick Link
- G. (1) - Hanging Chain(72",4mm) #XREBGT334SGGRCHA4MM
- H. (1) - Fixture Loop
- I. (1) - Center Stem(15.3mm, 12") #XREBGT336SGGRSTEM12IN
- J.(5) - Candle Sleeve(W1",H2") XREBGT334SGGRCDL2IN
- K.(1) - Finial
- L.(1) - Screwdriver
- M.(91) - Screw
- N.(182) - Plastic Washer



- L=1PC
- M=91PCS
- N=182PCS

