

### WARNING!



Be sure electrical power is OFF before and during installation or maintenance.  
The luminaire must be installed by a qualified electrician, in accordance with all applicable local codes.

Ensure that the rated luminaire voltage requirements are compatible with the available mains supply in which it will be installed.  
All LEDs are included in your lamp. Never touch the LED surface with your bare hands as this may reduce the life of your LED.  
Do not alter, relocate or remove any electrical component.

REF.	/	Light bulb
4014	/	2x E-26
420	/	2x E-26
456	/	1x E-26
4066	/	1x E-26
466	/	2x E-26
419	/	2x E-26
446	/	2x E-26
428	/	2x E-26
404	/	1x E-26
407	/	2x E-26
4018	/	1x E-26
4018C	/	1x E-26
467	/	1x E-26
4077	/	1x E-26
403	/	2x E-26

Family: Wall

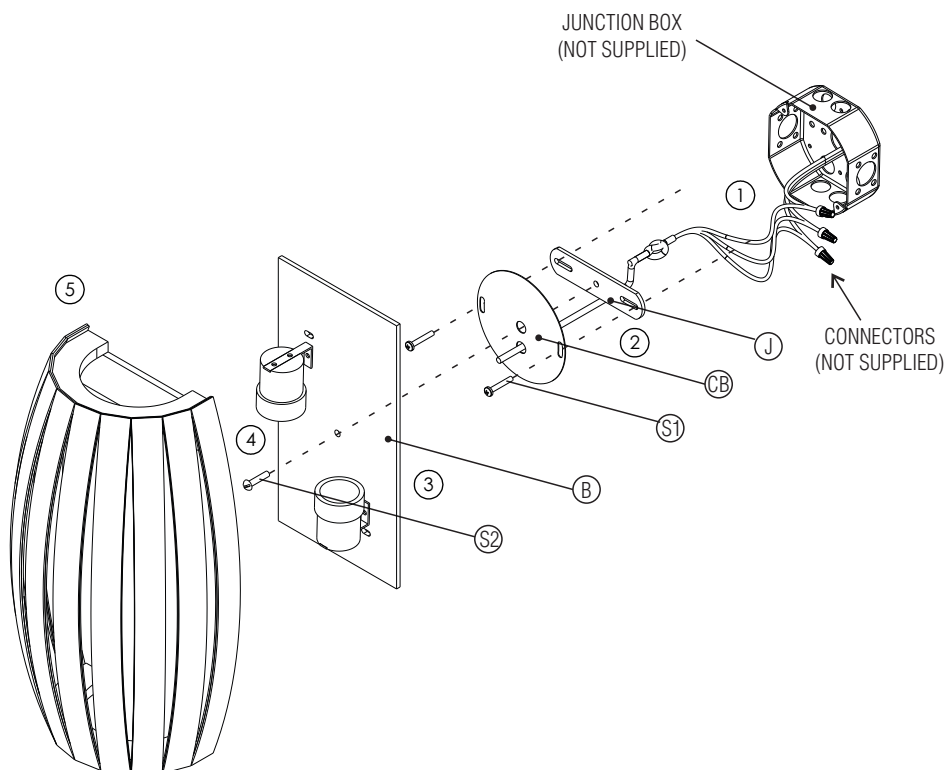
Color Temperature: Lamp dependent  
CRI: Lamp dependent  
Luminous Flux: Lamp dependent  
Total Power: Lamp dependent

Input Voltage: 120V - 240V  
Input Frequency: 60 Hz

Material: Natural Wood Veneer MDF and Acrylic

### INSTALLING THE FIXTURE ON WALL

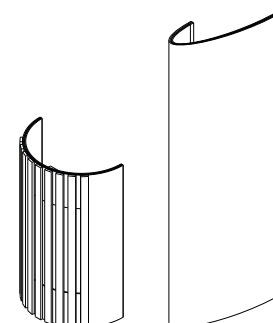
Turn off the electrical power before starting the installation, and keep it turned off until the installation is completed.



- 1 Make the electrical connections in compliance with all the safety standards and local electrical codes.  
This product must be installed in accordance with the applicable installation code by a person familiar with the construction and operation of the product, and the hazards involved.
- 2 Using the (S1) screws, fixate the crossbar (CB) and junction box cover (J) into the junction box.
- 3 Bring the support base close to the wall, and using the (S2) screw, fixate the support base (B) into the crossbar.
- 4 Install UL Listed E26 LED bulbs Max 25W on the sockets.
- 5 Fit the frontal diffuser into the support base.

Turn on the electrical power.

The luminaire is ready for use.



### ATTENTION!



FAILURE TO COMPLY WITH THESE INSTRUCTIONS MAY CAUSE ACCIDENTS AND LOSS OF PRODUCT WARRANTY.  
It is recommended to read these instructions completely and carefully before proceeding.

### SAVE THESE INSTRUCTIONS FOR FUTURE REFERENCE.

ACCORD Lighting guarantees coverage against manufacturing defects including electrical components and finishes, for a period of three years, under normal use, from the date of purchase. For warranty service, please contact your local dealer for further instructions. Proof of date of purchase will be required for validation of warranty service.

The responsibility of the manufacturer regarding the product warranty is related to the correct observation of the instructions contained in this manual.  
The manufacturer is not responsible for any damage to the product caused by accidents, alterations of any kind, improper usage or improper installation.  
See the website for additional warranty details.

ACCORD Lighting reserves the right to change the dimensions and specifications contained in this manual without prior notice, in accordance with its policy of continuous product improvement. Please, contact the manufacturer if additional information is necessary. The illustrations in this manual are for guidance only and may vary in scale, dimensions and model details.

### WARNING!



Be sure electrical power is OFF before and during installation or maintenance.  
The luminaire must be installed by a qualified electrician, in accordance with all applicable local codes.

Ensure that the rated luminaire voltage requirements are compatible with the available mains supply in which it will be installed.  
All LEDs are included in your lamp. Never touch the LED surface with your bare hands as this may reduce the life of your LED.  
Do not alter, relocate or remove any electrical component.

REF.	/	Wattage
4014	/	8W
420	/	8W
456	/	8W
419	/	8W
446	/	8W
428	/	8W
404	/	8W
407	/	8W
4018	/	8W
4018C	/	8W
466	/	16W
403	/	12W

Family: Wall

Input Voltage: 120V - 277V

Input Frequency: 60 Hz

Isolation: Class II

Material: Natural Wood Veneer MDF and Acrylic

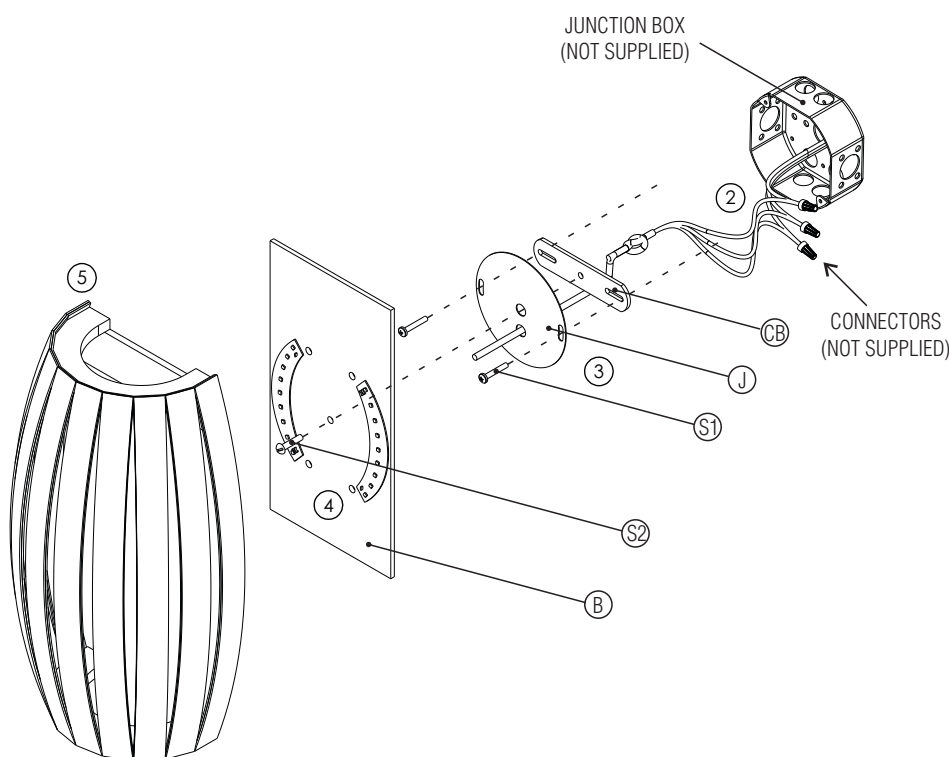
### INSTALLING THE FIXTURE ON WALL

Turn off the electrical power before starting the installation, and keep it turned off until the installation is completed.

- 1 Validate if your junction box is big enough for the driver to be placed. The driver has 70x40x22 mm (2.75x1.57x0.86 inches). Make the electrical connections in compliance with all the safety standards and local electrical codes. For model 466, the driver size is 75x40x30 mm (2.95x1.57x1.18 inches).
- 2 This product must be installed in accordance with the applicable installation code by a person familiar with the construction and operation of the product, and the hazards involved.
- 3 Using the (S1) screws, fixate the crossbar (CB) and junction box cover (J) into the junction box.
- 4 Bring the support base close to the wall, and using the (S2) screw, fixate the support base (B) into the crossbar.
- 5 Fit the frontal diffuser into the support base.

Turn on the electrical power.

The luminaire is ready for use.



### ATTENTION!



FAILURE TO COMPLY WITH THESE INSTRUCTIONS MAY CAUSE ACCIDENTS AND LOSS OF PRODUCT WARRANTY.  
It's recommended to read these instructions completely and carefully before proceeding.

### SAVE THESE INSTRUCTIONS FOR FUTURE REFERENCE.

ACCORD Lighting guarantees coverage against manufacturing defects including electrical components and finishes, for a period of three years, under normal use, from the date of purchase. For warranty service, please contact your local dealer for further instructions. Proof of date of purchase will be required for validation of warranty service.

The responsibility of the manufacturer regarding the product warranty is related to the correct observation of the instructions contained in this manual.  
The manufacturer is not responsible for any damage to the product caused by accidents, alterations of any kind, improper usage or improper installation.  
See the website for additional warranty details.

ACCORD Lighting reserves the right to change the dimensions and specifications contained in this manual without prior notice, in accordance with its policy of continuous product improvement. Please, contact the manufacturer if additional information is necessary. The illustrations in this manual are for guidance only and may vary in scale, dimensions and model details.